



# **ANNUAL GRASSROOTS DISCIPLINE REVIEW 2024-25 SEASON**

**FOR ALL**

**PUBLISHED: DECEMBER 2025**





# CONTENTS

<b>3</b>	<b>INTRODUCTION</b>
<b>4</b>	<b>OVERVIEW</b>
<b>8</b>	<b>DISCRIMINATORY CONDUCT</b>
<b>16</b>	<b>SERIOUS OFFENCES AGAINST A MATCH OFFICIAL</b>
<b>21</b>	<b>ASSAULTS COMMITTED BY A PARTICIPANT ON A PARTICIPANT</b>
<b>23</b>	<b>GENERAL MISCONDUCT</b>
<b>29</b>	<b>FA INTERVENTIONS TO DRIVE CHANGE</b>
<b>31</b>	<b>SUMMARY</b>



# INTRODUCTION



Football is the nation's game, with over 15.7 million people across England playing regularly, supported by a dedicated workforce of 1 million\*.

Ahead of the 2024–28 strategic cycle, feedback from across the grassroots\*\* game revealed that 7 in 10 people felt poor behaviour was negatively impacting their grassroots football experience\*\*\*. In response, tackling poor behaviour has been identified as a key strategic priority for both The FA's Grassroots Division and our 50 County Football Associations. Together, we are committed to enforcing stronger sanctions, promoting positive conduct, and encouraging shared responsibility across the game to raise standards.

A crucial element of this work is our focus on addressing the most serious cases, including offences aggravated by reference to a protected characteristic, threats, physical contact or assaults on match officials, and player-on-player assaults. Collectively, these are referred to as "Serious Cases".

Although such offences occur in fewer than 0.2% of the 1.2 million grassroots matches played each year, their impact on those involved can be profound. The FA remains resolute in ensuring that these incidents are handled firmly and fairly.

The Grassroots Discipline Team oversees all cases of this nature in partnership with the County FA network. All charges are reviewed by the independent National Serious Case Panel, a diverse group of experts, with nearly 50% of members representing communities traditionally underrepresented within the game.

Looking ahead to the 2025–26 season, The FA has introduced a range of new initiatives to further strengthen our approach to tackling poor behaviour, complementing existing tools and campaigns such as "Love Football, Protect the Game" and "Enough is Enough."

The purpose of this annual report is to provide transparency and insight into Serious Cases managed by The FA's Grassroots Discipline Team, covering both the adult and junior grassroots game. For the first time, this report includes a per 1,000 fixtures metric, providing a more accurate measure of incident prevalence, in light of the game's continued growth.

Thank you for taking the time to read this report and for your continued commitment to making football a safe, positive, and inclusive environment – For All.

**Alan Darfi**  
Senior Discipline Manager  
The Football Association

\*The Social and Economic Value of Grassroots Football in England Report – October 2024

\*\*Steps 5 and below of the men's football pyramid (including youth) and Tiers 3 and below of the women's pyramid (including youth).

\*\*\*Grassroots Survey – A Conversation About Our Game – 2023



# OVERVIEW

## ALLEGATIONS – SEASON COMPARISON

Number of collective **serious case allegations** in 2024/2025:

**4,649**

(3.73/1000 fixtures)

Number of collective **serious case allegations** in 2023/2024:

**4,277**

(3.65/1000 fixtures)

**Change:**

**+0.08/1000  
fixtures**

### Commentary:

Serious cases are offences aggravated by reference to a protected characteristic, threats, physical contact or assaults on match officials, and player-on-player assaults.

Research shows that for every serious case reported, an estimated 2.19 incidents actually occur\*. We also know that many participants believe that only 30% of reported allegations result in a charge being issued when, in reality, the true figure is nearly 50%.

It is therefore encouraging to see an increase in the number of serious case allegations reported. This suggests that participants are becoming more confident in reporting misconduct and are better informed about how to do so.

The FA views any rise in reporting as a positive development, reflecting increased trust in the disciplinary process. We remain committed to closing the reporting gap and will repeat research in this area in the 2025–26 season to monitor progress and identify further opportunities for improvement.

\*2CV Independent Research – 2024



# OVERVIEW (CONTINUED)

## CHARGES – SEASON COMPARISON

Total <b>serious case charges</b> in 2024/2025:	<b>2,244</b> (1.80/1000 fixtures)	Total <b>proven serious cases</b> in 2024/2025:	<b>1,767</b> (1.42/1000 fixtures)
Total <b>serious case charges</b> in 2023/2024:	<b>2,561</b> (2.19/1000 fixtures)	Total <b>proven serious cases</b> in 2023/2024:	<b>1,841</b> (1.57/1000 fixtures)
<b>Change:</b>	<b>-0.39/1000 fixtures</b>	<b>Percentage of charges resulting in proven outcome:</b>	<b>78%</b> (2023-24 = 71%)

### Commentary:

While the number of allegations received has increased, the number of charges issued has decreased. This reflects the ongoing refinement of our investigative processes, ensuring that only cases meeting the required burden of proof proceed to charge.

The overall proven rate of 78% in the 2024–25 season (up from 71% in 2023–24) demonstrates that participants are right to have confidence in the misconduct process. It also shows that allegations are investigated thoroughly, and that when charges are issued, participants can be assured of a fair and balanced hearing.

# OVERVIEW (CONTINUED)

## CASE CLOSURE TIMES – SEASON COMPARISON

Average days from **case notification to closure** in 2024/2025:

**48.5**

Average days from **case notification to closure** in 2023/2024:

**47**

**Change:**

**+1.5 days**

### Commentary:

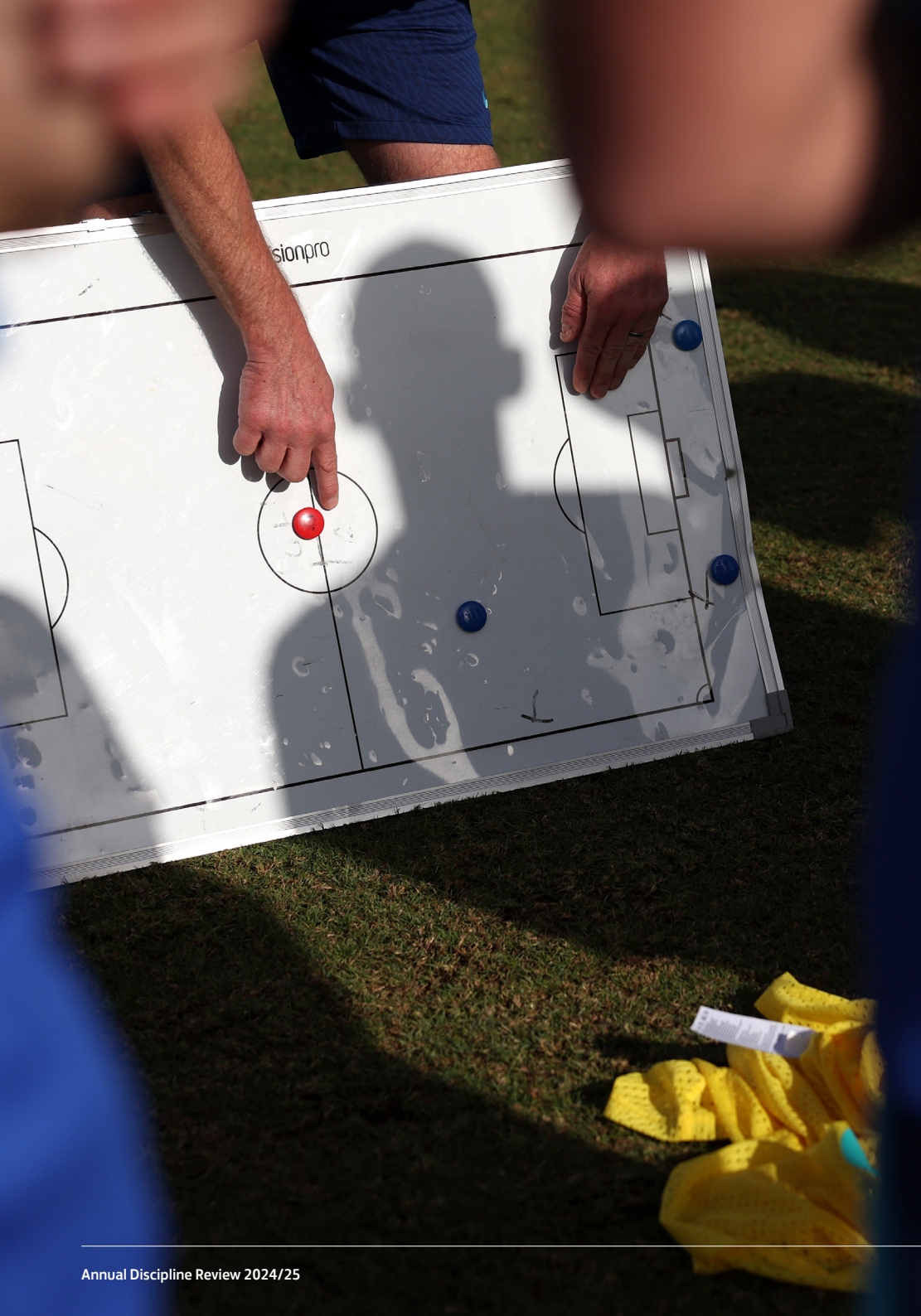
As a result of the overall increase in allegations, there has been a slight rise in the average time taken from case notification to closure. However, this remains well within the regulatory timeframe of 90 days for a charge to be heard following receipt of an allegation.

The FA remains committed to ensuring that all cases are resolved promptly and efficiently, recognising the importance of timely outcomes for both those reporting allegations and those responding to charges.









# DISCRIMINATORY CONDUCT

## Commentary:

The FA has identified “A Game Free from Discrimination” as a strategic priority for the 2024–28 strategy period and continues to invest significantly in this area, including through the national anti-discrimination campaign, Enough is Enough.

To strengthen its disciplinary framework, The FA has in place a minimum six-match suspension for first-time offenders, alongside mandatory fines and compulsory attendance on an education course. In addition, recommended minimum fine levels have now also been established for clubs found guilty of aggravated misconduct.

Every County FA is now required to operate an Inclusion Advisory Board (IAB) in line with The FA’s Code of Governance for County FAs, recognised as a gold standard in sports governance.

Offences referencing ethnicity, race, or colour remain the most prevalent category, as they have for the past seven seasons. Meanwhile, offences referencing sexual orientation and disability have continued to rise, suggesting that participants are becoming more aware of inappropriate and unacceptable language in these areas.

Despite being a smaller overall number, offences referencing gender continue to increase, linked to the rapid growth and visibility of the women and girls' game.

Encouragingly, there has been a reduction in offences referencing religion, especially antisemitic remarks, which had increased significantly in the 2023–24 season. The FA continues to work proactively in this area, including through collaboration with a dedicated antisemitism taskforce group.



# OVERVIEW

## DISCRIMINATORY ALLEGATIONS – SEASON COMPARISON

Number of **discriminatory allegations**  
in 2024/2025:

**2,849**

(2.28/1000 fixtures)

Number of **discriminatory allegations**  
in 2023/2024:

**2,586**

(2.21/1000 fixtures)

**Change:**

**+0.07/1000  
fixtures**

### Commentary:

The FA remains focused on ensuring that participants feel confident reporting misconduct and understand how to do so. Closing the reporting gap that we know exists is a key priority, and The FA will repeat research in this area during the 2025–26 season to assess progress and identify further opportunities for improvement.

# DISCRIMINATORY CONDUCT 2024/2025

## RELATED TO ETHNICITY/RACE COLOUR

**Note:**

At the time of writing, there are a number of cases unresolved, therefore affecting the total proven/not proven outcomes.

Number of **serious case allegations** relating to **ethnicity/race/colour** in 2024/2025:

**1,021**  
(0.82/1000 fixtures)

Number of **charges** relating to **ethnicity/race/colour** in 2024/2025:

**357**

Number of **serious case allegations** relating to **ethnicity/race/colour** in 2023/2024:

**1,077**  
(0.92/1000 fixtures)

Number of **proven charges** relating to **ethnicity/race/colour** in 2024/2025:

**240**

**Change:**

**-0.10/1000 fixtures**

Number of **not proven charges** relating to **ethnicity/race/colour** in 2024/2025:

**110**

Average sanction: **7 matches**



# DISCRIMINATORY CONDUCT 2024/2025 (CONTINUED)

## RELATED TO SEXUAL ORIENTATION

**Note:**

At the time of writing, there are a number of cases unresolved, therefore affecting the total proven/not proven outcomes.

Number of **serious case allegations** relating to **sexual orientation** in 2024/2025:

**738**  
(0.59/1000 fixtures)

Number of **charges** relating to **sexual orientation** in 2024/2025:

**322**

Number of **serious case allegations** relating to **sexual orientation** in 2023/2024:

**678**  
(0.58/1000 fixtures)

Number of **proven charges** relating to **sexual orientation** in 2024/2025:

**254**

**Change:**

**+0.01/1000 fixtures**

Number of **not proven charges** relating to **sexual orientation** in 2024/2025:

**60**

Average sanction: **7 matches**

# DISCRIMINATORY CONDUCT 2024/2025 (CONTINUED)

## RELATED TO DISABILITY

**Note:**

At the time of writing, there are a number of cases unresolved, therefore affecting the total proven/not proven outcomes.

Number of **serious case allegations relating to disability** in 2024/2025:

**418**  
(0.34/1000 fixtures)

Number of **charges relating to disability** in 2024/2025:

**191**

Number of **serious case allegations relating to disability** in 2023/2024:

**365**  
(0.31/1000 fixtures)

Number of **proven charges relating to disability** in 2024/2025:

**157**

**Change:**

**+0.03/1000 fixtures**

Number of **not proven charges relating to disability** in 2024/2025:

**33**

Average sanction: **7 matches**

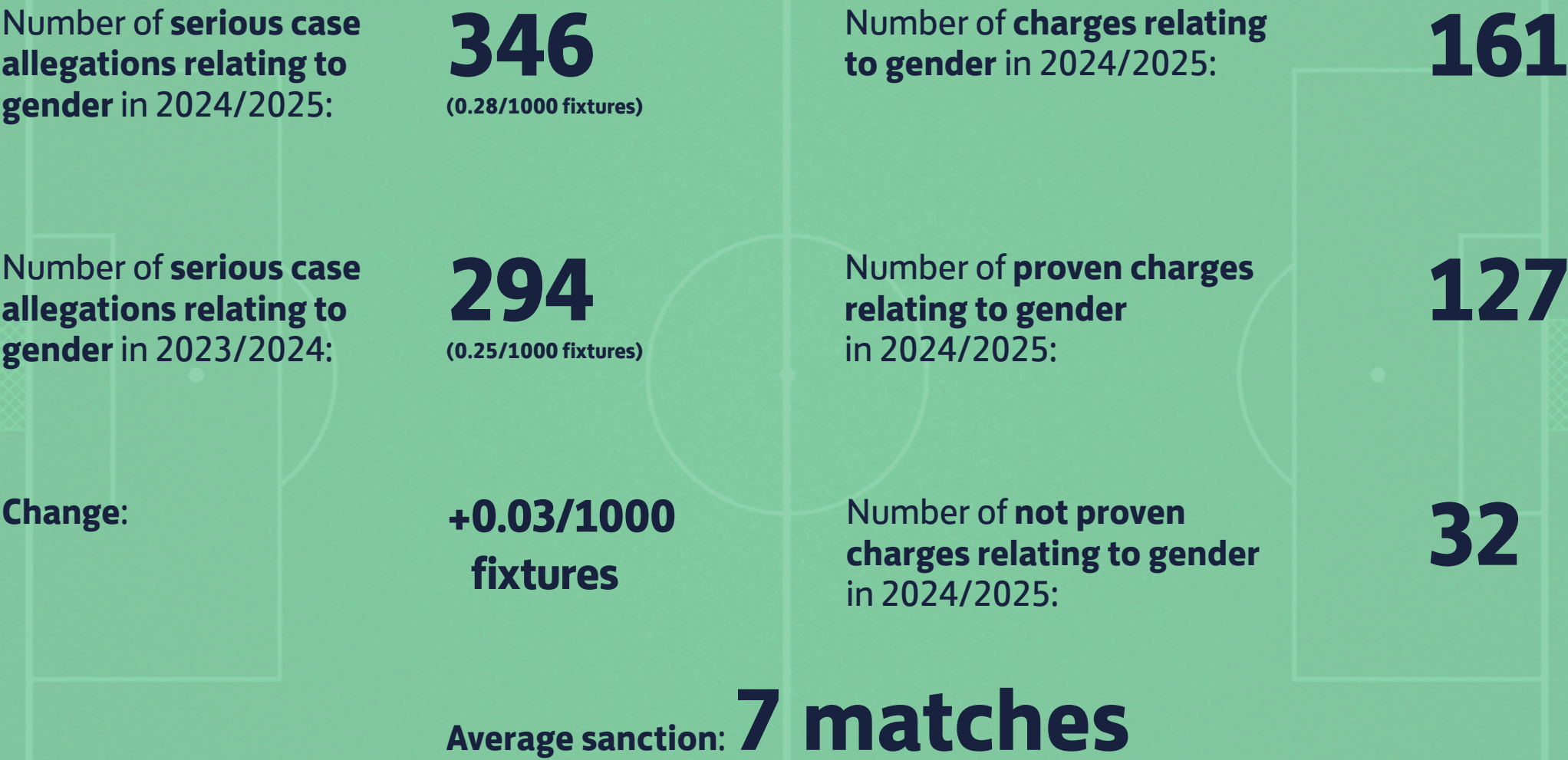


# DISCRIMINATORY CONDUCT 2024/2025 (CONTINUED)

## RELATED TO GENDER

**Note:**

At the time of writing, there are a number of cases unresolved, therefore affecting the total proven/not proven outcomes.

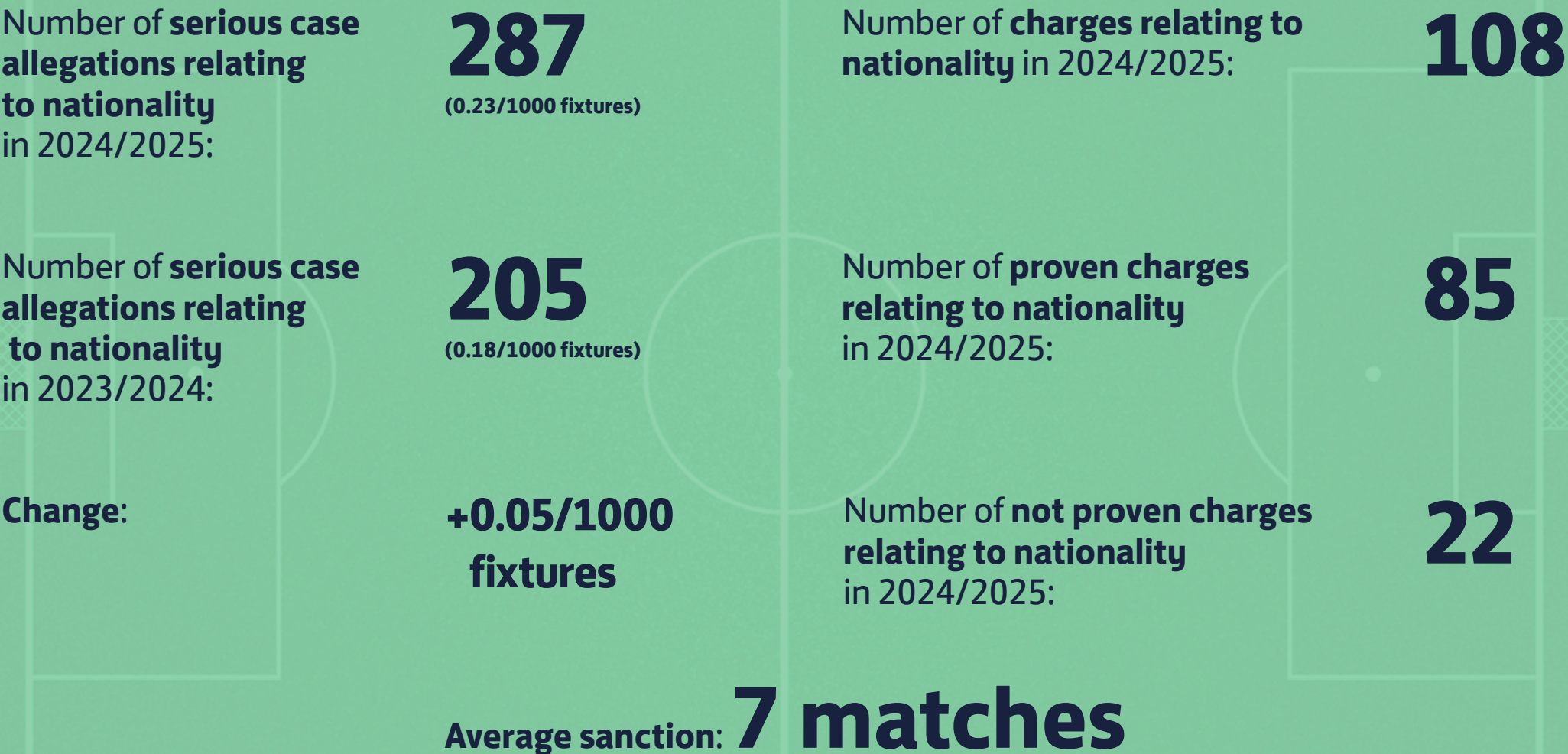


# DISCRIMINATORY CONDUCT 2024/2025 (CONTINUED)

## RELATED TO NATIONALITY

**Note:**

At the time of writing, there are a number of cases unresolved, therefore affecting the total proven/not proven outcomes.



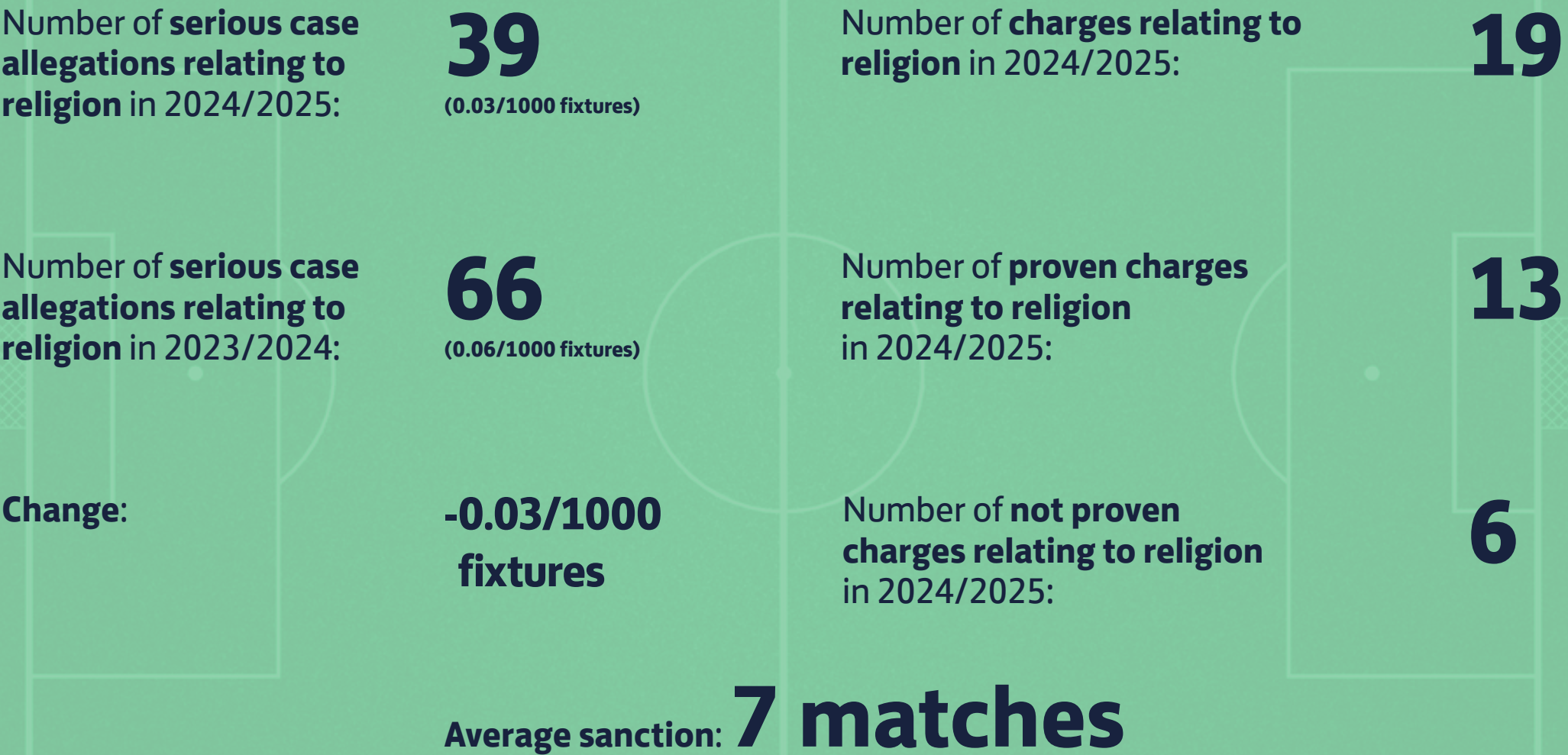


# DISCRIMINATORY CONDUCT 2024/2025 (CONTINUED)

## RELATED TO RELIGION

**Note:**

At the time of writing, there are a number of cases unresolved, therefore affecting the total proven/not proven outcomes.







# SERIOUS OFFENCES AGAINST A MATCH OFFICIAL

## Commentary:

Serious offences against match officials are those that include threats, physical contact or assaults.

Refereeing numbers are at their strongest levels to date, with nearly 40,000 registered match officials and a retention rate of 82%, both representing year-on-year growth. Despite this positive trend, The FA recognises the significant impact that serious offences against match officials can have on the refereeing community. Losing even one official as a result of such behaviour is one too many.

To address this, The FA has implemented lengthy suspensions and substantial fines for offences of this nature. In addition, all proven offenders are required to complete an educational course before being permitted to return to the game.

The FA also provides direct support through the National Refereeing Manager to every official who reports an assault or attempted assault, working closely with County FAs to ensure that affected officials receive timely and appropriate support.

For an allegation of assault or attempted assault on a match official to be proven, it must be evidenced that actions or attempted actions caused or sought to cause injury, whether or not injury actually occurred.

For an allegation of physical contact or attempted physical contact, it must be shown that actions were confrontational in nature but unlikely to cause injury.

For an allegation of threatening behaviour, it must be established that a match official was threatened through words or actions, regardless of whether they believed themselves to be under threat.

The FA reviews all sanction ranges annually and remains committed to reducing offences against match official through a combination of stronger sanctions, targeted education, and initiatives promoting positive behaviour across the game.



# OVERVIEW

## OFFENCES AGAINST MATCH OFFICIALS – SEASON COMPARISON

Total serious offence allegations  
against Match Officials in 2024/2025:

**1,702**

(1.37/1000 fixtures)

Total serious offence allegations  
against Match Officials in 2023/2024:

**1,716**

(1.47/1000 fixtures)

Change:

**-0.10/1000  
fixtures**

### Commentary:

It is encouraging to see a reduction in serious case allegations involving match officials. This group remains the most likely to report misconduct, and as such, is less affected by the reporting gap.

The FA has reviewed and updated its sanction guidelines for serious cases involving match officials and continues to apply strong deterrents. The current recommended bans range from 5 to 10 years for assault and 3 to 5 years for attempted assault. Additionally, the test for proving a charge of threatening a match official has been revised to make it clearer and more straightforward to apply and the requirement for an incident to be classed as an assault now clearly includes attempts, resulting in an increase in assault charges, which bring lengthy bans.

Recognising the significant impact that serious incidents have on match officials, The FA has introduced a series of new and strengthened measures to help deter offenders, details of which are set out later in this report.

# SERIOUS OFFENCES AGAINST A MATCH OFFICIAL

## (CONTINUED)

### ASSAULT/ATTEMPTED ASSAULT

#### Note:

At the time of writing, there are a number of cases unresolved, therefore affecting the total proven/not proven outcomes.

Total **serious case allegations relating to assault/attempted assault on a Match Official** in 2024/2025:

**194**  
(0.16/1000 fixtures)

Number of **charges relating to assault/attempted assault on a Match Official** in 2024/2025:

**133**

Total **serious case allegations relating to assault/attempted assault on a Match Official** in 2023/2024:

**95**  
(0.08/1000 fixtures)

Number of **proven charges relating to assault/attempted assault on a Match Official** in 2024/2025:

**98**

**Change:**

**+0.08/1000 fixtures**

Number of **not proven charges relating to assault/attempted assault on a Match Official** in 2024/2025:

**32**

#### Commentary:

The definition of an assault now clearly includes attempts to assault, resulting in an increase in assault charges, which bring lengthy bans.



# SERIOUS OFFENCES AGAINST A MATCH OFFICIAL

(CONTINUED)

## PHYSICAL CONTACT/ATTEMPTED PHYSICAL CONTACT

**Note:**

At the time of writing, there are a number of cases unresolved, therefore affecting the total proven/not proven outcomes.

Total serious case allegations relating to physical contact/ attempted physical contact on a Match Official in 2024/2025:	480 (0.38/1000 fixtures)	Number of charges relating to physical contact/attempted physical contact on a Match Official in 2024/2025:	298
Total serious case allegations relating to physical contact/ attempted physical contact on a Match Official in 2023/2024:	454 (0.39/1000 fixtures)	Number of proven charges relating to physical contact/attempted physical contact on a Match Official in 2024/2025:	232
Change:	-0.01/1000 fixtures	Number of not proven charges relating to physical contact/ attempted physical contact on a Match Official in 2024/2025:	64

# SERIOUS OFFENCES AGAINST A MATCH OFFICIAL

## (CONTINUED)

### THREATENING BEHAVIOUR

#### Note:

At the time of writing, there are a number of cases unresolved, therefore affecting the total proven/not proven outcomes.

Total serious case allegations relating to threatening a Match Official in 2024/2025:

**1,028**  
(0.82/1000 fixtures)

Number of charges relating to threatening a Match Official in 2024/2025:

**620**

Total serious case allegations relating to threatening a Match Official in 2023/2024:

**1,096**  
(0.94/1000 fixtures)

Number of proven charges relating to threatening a Match Official in 2024/2025:

**530**

Change:

**-0.12/1000  
fixtures**

Number of not proven charges relating to threatening a Match Official in 2024/2025:

**79**



# ASSAULTS COMMITTED BY A PARTICIPANT ON A PARTICIPANT



# ASSAULTS COMMITTED BY A PARTICIPANT ON A PARTICIPANT

## Note:

At the time of writing, there are a number of cases unresolved, therefore affecting the total proven/not proven outcomes.

Total serious case allegations relating to participant-on-participant assault in 2024/2025:

**98**  
(0.08/1000 fixtures)

Number of charges relating to participant-on-participant assault in 2024/2025:

**35**

Total serious case allegations relating to participant-on-participant assault in 2023/2024:

**80**  
(0.07/000 fixtures)

Number of proven charges relating to participant-on-participant assault in 2024/2025:

**31**

Change:

**+0.01/1000  
fixtures**

Number of not proven charges relating to participant-on-participant assault in 2024/2025:

**2**

## Commentary:

Serious injury must be inflicted for an assault (participant on participant) to be proven. The FA will continue to deal with incidents of this nature seriously, with lengthy recommended sanctions. The FA also works with the Police as appropriate, where criminal charges are also brought against offenders.





# GENERAL MISCONDUCT

# GENERAL MISCONDUCT

## Commentary:

It is pleasing to report a decrease in a number of offences including dissent and sin bins, which were simplified and relaunched in the 2023-24 season.

We continue to monitor the increase in SOW (Stage One Warning) offences for dissent, which are cautions issued to non-players such as coaches, managers and officials. This incentive has provided Match Officials with the ability to take immediate action against offenders during a match, which has had a positive impact in terms of ensuring misconduct does not escalate further.

## Cautionable misconduct

CAUTION CODE	PER 1000 FIXTURES (2023/2024)	PER 1000 FIXTURES (2024/2025)	CHANGE (PER 1000 FIXTURES)
C1 – Unsporting Behaviour	220.72	194.06	-26.66
C2 – Dissent	4.88	4.20	-0.68
C2 – Dissent (sin bin)	30.62	25.03	-5.59
C3 – Persistent Offending	14.92	12.15	-2.77
C4 – Delaying Restart	30.36	24.89	-5.47
C5 – Failed to respect required distance	1.02	0.74	-0.28
C6 – Entering/re-enters without Match Official permission	0.94	0.79	-0.15
C7 – Exiting without Match Official permission	0.13	0.10	-0.03



# GENERAL MISCONDUCT (CONTINUED)

## Standard misconduct

DISMISSAL CODE	PER 1000 FIXTURES (2023/2024)	PER 1000 FIXTURES (2024/2025)	CHANGE (PER 1000 FIXTURES)
S1 – Serious Foul Play	3.74	3.10	-0.64
S2 – Violent Conduct	8.92	7.82	-1.11
S3 – Spitting	0.11	0.09	-0.02
S4 – DOGSO <sup>1</sup> by handball offence save for goalkeeper	1.08	0.94	-0.14
S5 – DOGSO to an opponent whose overall movement is towards the offender's goal by an of- fence punishable by a free kick	2.28	2.04	-0.24
S6 – Offensive Language	6.92	5.64	-1.28
S7 – Second Cautionable Offence	8.09	9.67	+1.58

<sup>1</sup> Denying an Obvious Goal-Scoring Opportunity.

# GENERAL MISCONDUCT (CONTINUED)

## Misconduct charges

OFFENCE TYPE	PER 1000 FIXTURES (2023/2024)	PER 1000 FIXTURES (2024/2025)	CHANGE (PER 1000 FIXTURES)
E3 Improper Conduct Against a Match Official – Including Abusive Language	2.76	2.66	-0.10
E20 Failure to control club officials/ E21 Failure to control spectators	4.71	4.70	-0.01



# GENERAL MISCONDUCT (CONTINUED)

## SOW offences

DISMISSAL CODE	PER 1000 FIXTURES (2023/2024)	PER 1000 FIXTURES (2024/2025)	CHANGE (PER 1000 FIXTURES)
SOW01 – Clearly/persistently not respecting the confines of the technical area	0.30	0.27	-0.03
SOW02 – Delaying the restart of play	0.15	0.13	-0.02
SOW03 – Deliberately entering the technical area of the opposing team	0.02	0.02	0.00
SOW04 – Dissent by word or action	5.15	5.16	+0.01
SOW05 – Entering the referee review area	0.00	0.01	+0.01
SOW06 – Excessively showing the TV signal for a 'VAR' review	0.00	0.00	0.00
SOW07 – Excessively/persistently gesturing for a red/ yellow card	0.05	0.03	-0.02

# GENERAL MISCONDUCT (CONTINUED)

## SOW offences (continued)

DISMISSAL CODE	COUNT OF INCIDENTS (2023/2024)	PER 1000 FIXTURES (2024/2025)	CHANGE (PER 1000 FIXTURES)
SOW08 – Gestures which show clear lack of respect for Match Officials (e.g. sarcastic clapping)	0.21	0.19	-0.02
SOW09 – Gesturing or acting in a provocative manner or inflammatory manner	0.34	0.28	-0.06
SOW10 – Persistent or unacceptable behaviour (including repeated warnings)	0.43	0.42	-0.01
SOW11 – Showing a lack of respect for the game	0.20	0.21	+0.01
SOW12 – Throwing/kicking drinks bottles or other objects	0.03	0.03	0.00
SOW13 – Other	0.23	0.17	-0.06

\*Please note: some 2023-24 figures have been amended following a data cleanse



# FA INTERVENTIONS TO DRIVE CHANGE

## Captain's Only Protocol

A Captains Only protocol has been introduced across all levels of English football. This means that only the team captain can approach a match official to discuss a decision after it has been made. A 'captain-only zone' has been introduced which extends four metres around the referee, and only the captain can enter this space. Other players can receive a caution for dissent if they do.

This new protocol is intended to reduce wider incidents of dissent and intimidation of match officials.

## Cooling Off Periods

The introduction of 'cooling off periods' is being trialled across selected grassroots leagues in the 2025-26 season as a tool to help prevent escalation during heated moments in a match. If the referee feels the game is getting too heated or unsafe, they can pause play and send all players to their penalty areas. If this happens, captains and coaches will be required to meet with the referee in the centre circle to discuss the issue and help calm their teams. Other players must stay in their penalty areas during the break, and anyone who leaves without permission may receive a yellow card. After a short timeout, based on the seriousness of the situation and conditions, the referee will restart the match.

## Points Deductions

The FA introduced point deductions from the start of the 2023/24 season, where players or coaches commit repeated offences of serious misconduct.

This landmark development followed consistent feedback from across grassroots football that player and coach behaviour is a significant issue and specifically targets offending teams where its participants commit repeated serious misconduct, making it clear to clubs that this kind of behaviour will not be tolerated. Deductions range from 3 to 12 points depending on the number of breaches within 12 months of the team's first offence and severity.

We know this approach is working, as the regulations were only applied twice in the 2024-25 season, clearly indicating this deterrent is having the desired effect.

## Ground Closures

The FA has introduced the power for teams at step 5 and step 6 of the National League System to have a full or partial stadium closure, where there are repeated incidents of serious misconduct. Further details can be found [here](#).

## Body Cam Trial

The FA started to pilot the wearing of body cams by match officials in February 2023, across four adult grassroots leagues. Since the trial began, there have only been six allegations of misconduct against a match official wearing a bodycam. The pilot has therefore been further expanded for the 2025-26 season. For this season, the FA has identified parts of the game where it is felt that body cams will have the biggest impact. The FA continues to monitor the impact of this trial closely.



# FA INTERVENTIONS TO DRIVE CHANGE (CONTINUED)

## Under-18 Referee Armbands

Starting this season, all referees under the age of 18 will have the option to wear a yellow armband, which signifies they are not an adult. This will add further protection to our young referees, serving as a visual notice to players, coaches, and spectators to treat them with an extra level of respect and patience. These armbands will be distributed to all U18 referees via their respective County FAs, and while not mandatory, we are encouraging those eligible to wear them.

## Penalty Point Accumulations

From the start of the 2024-25 season, The FA revamped its penalty point system and introduced new charges where teams breach certain limits. Penalty points are now only issued for behavioural offences, such as dissent or threatening behaviour. When certain accumulation thresholds of these points are reached, teams will be asked to evidence steps that are being taken to tackle poor behaviour and bespoke support will be provided by County FA's.

Ultimately, ongoing accumulation of these penalty points can lead to removal of England Football Accreditation or even the removal of a team from a competition. In the 2024-25 season, 20 teams either had their affiliation immediately removed or affiliation for 2025-26 was made subject to the County FA agreeing an action plan with them ahead of the start of the season.

## Minimum Fines for Aggravated Offences

A key part of our work is the continued focus on addressing the most serious of cases, including offences aggravated by reference to a protected characteristic. Whilst these offences only occur in less than 0.2 per cent of all grassroots football annually, we know the serious impact these incidents have on those within the game.

A minimum fine of £75 has been introduced for individual misconduct charges and a recommended entry point of between £100 and £200 depending on the level of football for club misconduct charges where there is a protected characteristic involved.

## Grassroots Code

We will continue to embed the Respect Standard, supported by Codes of Conduct, which was launched prior to the 2024-25 season, clearly setting out expectations of behaviours in the grassroots game: Enjoy the Game; Give Respect; Be Inclusive; Work Together; and Play Safe.

Having launched the Grassroots Code at the start of the 2024-25 season, The FA will continue to develop this area of the game, ensuring participants Respect the Standard. For more details click [here](#).

## Behaviour Improvement Programme

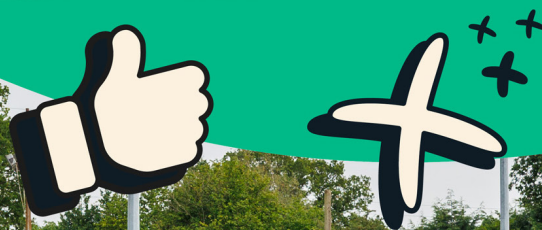
Our Behaviour Improvement Programme will run again this year following its success in the 2024-25 season. The programme uses discipline and respect score data to monitor clubs for poor conduct, including dissent, abuse of referees or players, and serious misconduct. Clubs accumulate penalty points for repeated incidents and receive respect scores from opponents, creating a league table that identifies both the worst offenders and consistently well-behaved teams. We are continuing the programme this season, which sees County FAs working directly with clubs identified to improve repetitive poor behaviour.







# WE RESPECT THE STANDARD DO YOU?



## SUMMARY:

The FA has made “A Game Free from Discrimination” and “Tackling Poor Behaviour” two of its core priorities within the 2024–28 FA Group and Grassroots Football Division Strategies.

Over the next three years, we will continue to combat discrimination, enforce stronger sanctions, promote positive behaviour, and encourage shared responsibility across all levels of the game to help raise standards.

The FA is proud of the progress already made in this area and has implemented a number of innovative measures to address serious misconduct. However, it recognises that there is always more to be done. By working collaboratively across every level of the game, The FA is committed to ensuring that all instances of serious misconduct are handled appropriately and effectively.

The FA also acknowledges that these challenges cannot be solved in isolation. Through close partnership with the County FA network and the grassroots football community, we will continue to make sure that football remains a safe, inclusive, and welcoming environment – For All.



The Football Association  
Wembley Stadium  
London HA9 0WS  
**T:** +44 (0)800 169 1863  
**F:** +44 (0)800 169 1864  
**W:** TheFA.com