

Easy Read Case Studies

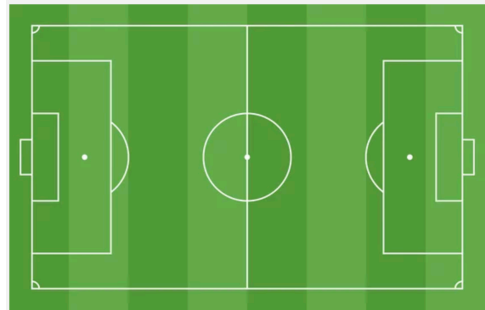
Case Study: Patricia Gregory



- Patricia Gregory is a football hero



- Her story is important to the history of women's football



- Patricia organised the first ever match for the England Women in 1972



- Her determination, strength, and resilience inspired others to join her



- Showing that football can bring communities together

Case Study: Kerry Davis



- Kerry Davis was the first woman of dual heritage to play for the Women's England Team



- One of the all-time top goal scorers



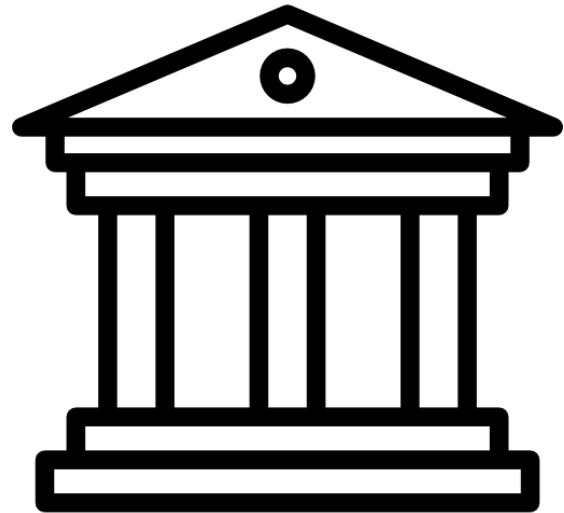
- She scored 44 goals in 82 games



- Kerry Davis joined Crewe Alexandra Ladies at the age of sixteen



- Kerry Davis played her first England game in 1982



- Kerry Davis Kerry Davis has been inducted into Manchester's National Football Museum Hall of Fame