



---

# THE FA HANDBOOK 2020/2021

Version: 1.0



# CONTENTS

---

## PARTS

---

NATIONAL LEAGUE SYSTEM REGULATIONS



# NATIONAL LEAGUE SYSTEM REGULATIONS

---

1. DEFINITIONS
  2. THE NLS SHALL BE OPERATED IN ACCORDANCE WITH THE REGULATIONS.
  3. NLS LEAGUE STRUCTURE
  4. RULES AND REGULATIONS FOR PROMOTION AND RELEGATION
  5. DETAILED PROMOTION AND RELEGATION ISSUES
  6. THE MOVEMENT OF CLUBS WITHIN THE NLS OTHER THAN BY PROMOTION OR RELEGATION
  7. PLACEMENT OF A CLUB INTO A LEAGUE
  8. PROCEDURES FOR THE DETERMINATION OF ANY MATTER, DISPUTE OR DIFFERENCE BY THE COMMITTEE
  9. CRITERIA FOR THE PARTICIPATION IN PLAY-OFF MATCHES
  10. ARBITRATION
  11. LICENSING SYSTEM
  12. PRECEDENCE
- LEAGUES/DIVISIONS AT STEPS 5 AND 6 OF THE NLS (SEASON 2020-21)
- APPENDIX A



# NATIONAL LEAGUE SYSTEM REGULATIONS

---

## 1. DEFINITIONS

---

In the interpretation of these Regulations: any words and expressions, unless otherwise defined herein, shall be words and expressions as defined as follows:-

“The Association” means The Football Association Limited.

“Club” means a football club for the time being in a League in membership of the NLS.

“Committee” in these Regulations means the relevant Committee appointed by the Association.

“Competition” in these Regulations means a League in the NLS.

“Conditional Licence” means a Licence with conditions attached to be met by a Club within a period determined by the Competition in which the Club holding the Licence is allocated by the Committee. Such period is not to exceed 1 March in the Membership Year to which the Licence relates. Save in exceptional circumstances a Conditional Licence cannot be granted to a Club for successive Membership Years in respect of the same Criterion.

“Criteria” means the Criteria for participation in Play Off Matches as set out in regulation 9 of these Regulations.

“Feeder Leagues” means Regional NLS Feeder Leagues from where a Club can enter the NLS.

“League” means any competition sanctioned by The Association and/or an Affiliated Association in membership of the NLS.

“Licence” means an annual licence required to be held by a Club to be a member of a Competition that may be either an Unconditional Licence or Conditional Licence.

“NLS” means the National League System of competitions controlled by The Association where promotion and relegation links exist between participating Leagues.

“Playing Season” means the period between the date on which the first competitive fixture in the League is played each year until the date on which the last competitive fixture in the League is played. For Clubs participating in Play Off Matches this does include the period when Play Off Matches are played.

“Play Off Match(es)” means matches played between Clubs in a Play Off Position on a format to be determined by each League provided that the format is the same across each Step.

“Play Off Position” means the position of a Club at the end of each Playing Season which is provided for in Standardised Rule 12 as qualifying the Club to take part in a Play Off Match to qualify for promotion to the next Step for the next Playing Season.

“Regular Season” means the period between the date on which the first competitive fixture in the League is played each year and the date on which the last competitive fixture in the League is played, excluding Play Off Matches.

“Regulations” means these regulations.

“Rules” means The Association’s Standardised Rules or The Association’s Standard Code of Rules under which a League is administered.

“Step” means the level at which a Club participates in the NLS.

“Unconditional Licence” means a Licence without any conditions attached.

1.1 Due to the impact of COVID-19, a number of regulations were temporarily amended or disapplied for the 2019/2020 season. It is intended that any temporarily amended or disapplied regulations will be reinstated for the commencement of the 2020/2021 season, save where any

further amendments have been approved by FA Council. A number of existing regulations have also been amended. The Regulations for season 2020/2021 shall come into force on 10 August 2020.

## 2. THE NLS SHALL BE OPERATED IN ACCORDANCE WITH THE REGULATIONS.

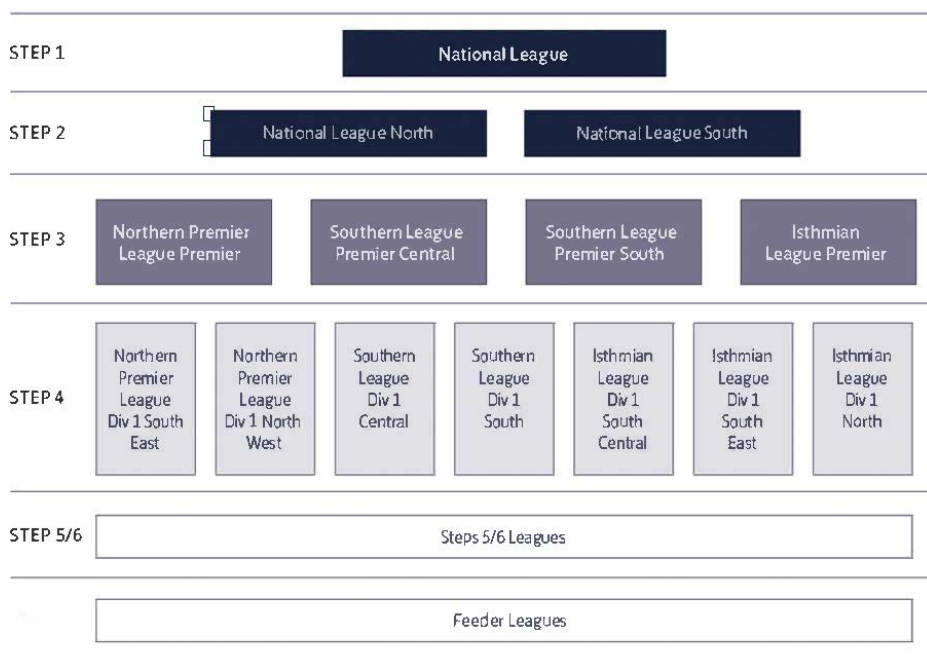
The aims and objectives of the NLS are to provide:

- 2.1 Clubs with a level of competitive football appropriate to their playing ability, stadium/ground facilities and geographical location.
- 2.2 A framework for discussion on matters of policy and common interest to Leagues and Clubs.
- 2.3 The seasonal movement of Clubs.
- 2.4 A co-ordinated approach between Leagues regarding the final date of the Playing Season.

All Leagues are bound by the Regulations. A Club is bound by the Regulations from the date it has qualified for placement into the NLS until such time as it leaves the NLS for whatever reason.

## 3. NLS LEAGUE STRUCTURE

- 3.1 The current structure of the NLS is set out below:



The Leagues currently at Steps 5 and 6 are set out at the end of the Regulations.

For the 2020/21 season, each Step shall have the following maximum number of Clubs: Step 1 – 24, Step 2 – 44, Step 3 – 88, Step 4 – 140, Step 5 – 280, Step 6 – 400. Clubs will be placed in the most geographically appropriate division.

From the 2020/2021 season onwards, each Step shall have the following maximum number of Clubs: Step 1 – 24, Step 2 – 48, Step 3 – 88, Step 4 – 160, Step 5 – 320, Step 6 – 340.

- 3.2 Any league wishing to become part of the NLS must apply to the Committee by 31st December in the relevant year in such form and/or providing such information as shall be required by the Committee from time to time. The decision as to whether or not a league should be admitted to the NLS shall be made by the Committee which will then decide on the Step at which the League will compete.

- 3.3 Any League wishing to propose an adjustment to its position within the NLS must apply in writing to the Committee by 31st December in any year for such proposal to be determined by the Committee in order, if approved, to have effect in the following Playing Season.

## 4. RULES AND REGULATIONS FOR PROMOTION AND RELEGATION

---

The Committee shall provide for the seasonal promotion, relegation or the movement of Clubs.

## 5.DETAILED PROMOTION AND RELEGATION ISSUES

---

5.1 The criteria for entry to the NLS and the criteria for ground/stadium facilities and the Criteria for participation in Play Off Matches shall be determined by the Committee. All criteria so determined shall be published by The Association from time to time.

5.2 Subject to 5.5, at the conclusion of each Playing Season, the following procedures will apply to promotion / relegation subject to the application of the Rules:

### Step 1 and Step 2

These regulations do not deal with promotion from Step 1

The Clubs finishing in the bottom four places at Step 1 at the end of the Playing Season will be relegated to a feeder pool and placed in the most geographically appropriate division at Step 2 for the following Playing Season. They will be replaced by the Clubs finishing in 1st position in each of the divisions at Step 2 together with a further two Clubs determined by a series of Play Off Matches. Where a Club finishes in 1st position but does not meet the criteria for participation at the next Step, the Club finishing in 2nd position shall be promoted. The Clubs finishing in 2nd, 3rd, 4th, 5th, 6th and 7th positions shall be eligible to take part in the Play Off Matches. The Play Off Matches shall be played so that in each Step 2 division there is a qualifying round, semi-finals and a promotion final with all ties being played over a single leg at the ground of the higher placed Club. The winner of the promotion final in each Step 2 division will be promoted. If a Club is not eligible to enter Step 1 then it shall not take part in any Play Off Matches. In that event, such Club shall not be replaced and the Play Off Matches structure and draw shall be adjusted as necessary by the Competition on the basis of the remaining Clubs' final league positions.

### Step 2 and Step 3

The Clubs in the bottom two places in each of the two divisions at Step 2 at the end of the Regular Season will be relegated to a feeder pool and placed in the most geographically appropriate division at Step 3 for the following Playing Season. They will be replaced by the Clubs finishing in 1st position in each of the four divisions at Step 3 together with a further four Clubs determined by a series of Play Off Matches. Where a Club finishes in 1st position but does not meet the criteria for participation at the next Step, the Club finishing in 2nd position shall be promoted and the Club finishing in 3rd position (and so on) shall be the Club in the next eligible position to take part in the Play Off Matches. Where a Club finishes in a Play Off Position but does not meet the Criteria for participation in Play Off Matches the Club finishing in the next eligible position shall take part in the Play Off Matches. In each division at Step 3, the Play Off Matches shall be played so that the highest placed of the eligible Clubs plays against the lowest placed and the other two Clubs play each other. The ties will be played on a single match basis with the home Club being the Club with the best points per match ratio in the Regular Season. If there are only three eligible Clubs then the highest placed shall receive a bye to a second match where it will play the winner of the other Play Off Match and the winner of that match will play in the further Play Off Match described above. Clubs finishing below position 7 will not be considered for Play Off Matches.

The promoted Clubs will be placed in a feeder pool and placed in the most geographically appropriate division at Step 2.

### Step 3 and Step 4

The Clubs finishing in the bottom two places in each of the four divisions at Step 3 at the end of the Regular Season, along with the two third from bottom Clubs with the lowest points per game at the end of the Regular Season will be relegated to a feeder pool and placed in the most geographically appropriate division at Step 4 for the following Playing Season. They will be replaced by the Clubs finishing in 1st position in each of the seven divisions at Step 4 together with a further seven Clubs determined by a series of Play Off Matches. Where a Club finishes in

1st position but does not meet the Criteria for participation at the next Step, the Club finishing in 2nd position shall be promoted and the Club finishing in 3rd position (and so on) shall be the Club in the next eligible position to take part in the Play Off Matches. Where a Club finishes in a Play Off position but does not meet the Criteria for participation in Play Off Matches, the Club finishing in the next eligible position shall take part in the Play Off Matches. In each division at Step 4 the Play Off Matches shall be played so that the highest placed of the eligible Clubs plays against the lowest placed and the other two Clubs play each other. The ties will be played on a single match basis with the home Club being the Club with the best points per game ratio in the Regular Season. If there are only three eligible Clubs then the highest placed shall receive a bye to the second match where it will play the winner of the other Play Off match and the winner of that match will be promoted. Clubs finishing below position 7 will not be considered for Play Off Matches.

The promoted Clubs will be placed in a feeder pool and placed in the most geographically appropriate division at Step 3.

#### Step 4 and Step 5

The Clubs finishing in last place in each of the seven divisions at Step 4 at the end of the Regular Season will take part in Step 4/5 Play Off matches against a Step 5 Club. A total of 24 Clubs will be automatically promoted to Step 4. These Clubs will be:

<b><u>League</u></b>	<b><u>Position</u></b>
Combined Counties League	Champion Club
Eastern Counties League	Champion Club
Essex Senior League	Champion Club
Hellenic League	Champion Club
Midland League	Champion Club
North West Counties League	Champion Club, 2nd and 3rd placed Clubs
Northern League	Champion Club, 2nd and 3rd placed Clubs
Northern Counties East	Champion Club, 2nd and 3rd placed Clubs
Southern Counties East	Champion Club
Spartan South Midlands	Champion Club
Southern Combination	Champion Club
United Counties League	Champion Club
Wessex League	Champion Club
Western League	Champion Club

In addition to the above, the remaining second placed Clubs will be ranked on points per game (then goal difference, then goals scored if required) with the four highest placed Clubs also receiving automatic promotion.

The remaining seven second placed Clubs will take part in the Step 4/5 Play Off matches on a single match basis at the ground of the Step 4 Club they are drawn against. Where possible, the draw for the Play Off matches will be regionalised. The winners of these Step 4/5 Play Off matches will be allocated to Step 4.

The Clubs to be promoted from Step 5 will be allocated to the most geographically appropriate division at Step 4.

A Club promoted to Step 4 shall comply with the Licencing System provision as set out in Appendix 1 to the Standardised Rules.

## Step 5 and Step 6

The Clubs in the bottom place in each of the fourteen divisions at Step 5 at the end of the Regular Season will be ranked on a points per match basis (then goal difference, then goals scored if required) - the twelve lowest will be relegated and placed in the most geographically appropriate division of Step 6. These Clubs will be replaced by the Clubs in first and second position of the two divisions operated by the South West Peninsula League and the Clubs placed in first, second, third and fourth positions in the remaining eighteen Leagues at Step 6 at the end of the Regular Season.

## Step 6 and relegation

At the end of the Regular Season the Clubs in the bottom two positions of each of the twenty Step 6 divisions will be liable to relegation. The final number of Clubs to be relegated will be confirmed once promotion candidates from Feeder Leagues and any vacancies are known. If reprieves are required the Clubs second from bottom will be ranked on a points per match basis (then goal difference, then goals scored if required) - the Club(s) with the best points per match will be reprieved. If all second from bottom Clubs are reprieved, and a further reprieve(s) is required, the same process will apply for Clubs in last position.

5.3 For the 2020/21 season only, at Steps 2-3 the Club finishing in last place in the table at the end of the Regular Season will be relegated and not reprieved.

5.4 At Steps 1 to 6, if a Club becomes eligible to take part in a Play Off Match and refuses to take part in that match or if a Club qualifies for promotion and refuses to be promoted then that Club shall be relegated from the division it last played in and shall play the following Playing Season in the division at the next Step level below. If the refusal/ineligibility applies to a Club currently operating at Step 6, the Club will be removed from the NLS and placed in the appropriate Regional NLS Feeder League.

5.5 Where a vacancy occurs within the NLS the following procedures will apply:

### **End of the Playing Season**

5.5.1 (a) Where a Club notifies its decision to resign from its League at the end of the Playing Season, then a vacancy is created on the date the notification of that decision is formally recorded by that League. Such resignation can only be withdrawn by the end of that Playing Season with the consent of the Board of that League.

(b) In all cases, that Club is treated as a relegated Club. The final table of that division is not affected.

(c) In cases where the vacancy is created after the end of the Playing Season but before the League's AGM, the vacancy will be filled in accordance with Regulation 5.5.2 below.

5.5.2 (a) Where a vacancy occurs at Step 1 and Step 2 following the completion of a Playing Season the best ranked Club in a relegation position is reprieved.

(b) Where a vacancy arises at Step 3 to 6 following the completion of a Playing Season it shall be dealt with at the sole discretion of the Committee.

(c) Where a vacancy occurs at Step 3 and 4 after the allocations for the following season have been published and prior to the holding of the League's AGM. The vacancy created shall be dealt with at the sole discretion of the Committee in order to minimise disruption.

(d) Where a vacancy occurs after the date of a League AGM then a League is not able to replace the Club(s) concerned for the following Playing Season.

### **Prior to the end of a Playing Season**

5.5.3 (a) In cases where the vacancy is created prior to the end of the Playing Season, at Steps 1 and 2 the vacancy will be filled by the best ranked Club in a relegation position at the end of the Regular Season, eligible of being reprieved in that same division. In the event of there being more vacancies than Clubs eligible to be reprieved, such vacancy or vacancies will be filled by Clubs eligible to be reprieved in the Competition's other



division(s) on a points per match ratio. At Steps 3 to 6, the vacancies shall be filled at the sole discretion of the Committee.

(b) Where, prior to the end of the Playing Season, a Club notifies its decision to resign from its League with immediate effect or where a Club is removed from the League for any reason, then the playing record of that Club will be expunged and a vacancy is created on the date the resignation or removal is formally recorded by that League.

(c) In all such cases that Club is treated as a relegated Club and the vacancy will be filled in accordance with 5.5.3(a) above.

5.6 Only internal changes to the constitution of a League are allowed following the holding of a League's Annual General Meeting.

5.7 Clubs are not allowed to enter into a ground share agreement in order to gain promotion or to retain membership at a particular Step where the Club has failed to attain or maintain the relevant Grade.

5.8 Ground grading requirements will be in accordance with the Rules.

In order to be considered for promotion, the following requirements will apply.

Step 1 - Clubs must comply fully with the requirements of Grade A.

Step 2 - Clubs competing at Step 2 must comply fully with the requirements of Grade B. To be considered for promotion to Step 1 or to be included in the Play Off Matches, Clubs must meet the requirements of Grade B together with any additional requirements by 31st March in the year in which they seek promotion. Clubs must also attain Grade A by 31st March in the year following promotion.

Step 3 - Clubs competing at Step 3 must comply fully with the requirements of Grade C. To be considered for promotion to Step 2 or to be included in the Play Off Matches, Clubs must meet the requirements of Grade C and attain Grade B by 31st March in the year following promotion.

Step 4 - Clubs promoted to Step 4 must comply fully with the requirements of Grade E by 31st March in the year following promotion and comply fully with the requirements of Grade D by 31st March in the year following that. Clubs competing at Step 4 must comply fully with the requirements of Grade D. To be considered for promotion to Step 3 or to be included in the Play Off Matches, Clubs must meet the requirements of Grade D and attain Grade C by 31st March in the year following promotion.

Step 5 - Clubs competing at Step 5 must comply fully with the requirements of Grade F.

Step 6 - Clubs competing at Step 6 must comply fully with the requirements of Grade G. To be considered for promotion to Step 5, Clubs must meet the requirements of Grade G and attain Grade F by 31st March in the year following promotion. Clubs promoted from Feeder Leagues must install floodlights in working order by 30th September following promotion. Failure to do this will result in a sanction being imposed at the discretion of the League of which the Club is a member. If by 31st March in the year following promotion the floodlights are still not installed then the Club will be a relegated Club and be dealt with accordingly.

5.9 If a Club is relegated for not achieving the required Grade for the Step at which it is playing it will not be eligible for promotion again until it has attained the required Grade for the Step to which it wishes to be promoted. The Club must have that Grade at 31st March in the year in which it seeks promotion.

5.10 Where a Club resigns from a League that Club will not be eligible for promotion for at least one Playing Season following the Season in which it resigned.

5.11 In the event of any question arising regarding the interpretation of these Regulations it will be decided by The Association in its sole discretion.

## **6. THE MOVEMENT OF CLUBS WITHIN THE NLS OTHER THAN BY PROMOTION OR RELEGATION**

---

6.1 Movement of a Club from participation in one League to another is not permitted other than by promotion and relegation or otherwise as set out in League Rules save with the approval of the Committee.

It may be necessary from time to time to move Clubs laterally at the same Step. Each year the Committee (or sub-committee thereof) will consider whether any lateral movements may be necessary at each Step and the final decision shall rest with the Committee / sub-committee. A Club may appeal the decision of the Committee / sub-committee to an Appeal Board and such appeal shall be conducted in accordance with the Appeal Regulations.

6.2 Any Club wishing to move from one League to another must make application in writing to the Committee on or before 31st March in each year to be effective for the following Playing Season. In the event of such application being successful the League from which the Club is moving shall not levy a financial penalty on that Club.

6.3 (i) If a Club (whether a Members' Club or a Company) is wound up, liquidated, or is removed from its League or withdraws from football competition ('the Former Club'), and a new Club ('the New Club') is established which wishes to be placed within the NLS, it will be allowed to make an application only to join a League/ division at Step 5 of the NLS unless the Former Club was in either Step 4 or Step 5 when the event which caused it to cease its membership occurred in which case it must re-join the NLS at a minimum of two Steps below the level at which it was at the time the event occurred, or withdrew from football competition, whichever is lower. Where the Former Club was a member of Premier League or EFL then the Committee shall at its absolute discretion determine in which League the New Club shall be placed for the following Playing Season and will set out at its complete discretion the requirements to be met by the New Club.

In order for consideration to be given to the placement in the NLS of the New Club in the following Playing Season, an initial application must be received by the Committee by 1st March or within twenty-one days of the Former Club being wound up, liquidated, resigning or being removed from its League or withdrawing from football competition, if such date is later than 1st March.

The full application accompanied by all necessary documents including evidence of security of tenure having been granted to the New Club and affiliation to a County Football Association must be received by 31st March or within twenty-one days of the Former Club being wound up, liquidated, resigning or being removed from its League or withdrawing from football competition, if such date is later than 1st March. The application shall be copied to the League of which membership is being requested. The application will be determined by the Committee.

In considering any application, the Committee will set out at its sole discretion the requirements to be met by the New Club.

In the event of more than one application being received within twenty-one days of the Former Club being wound up, liquidated, resigning or being removed from its League or withdrawing from football competition, the Committee will consider at its discretion which application will be considered in accordance with this Regulation.

(ii) If a Club is removed from its League and wishes to remain in the NLS it shall apply to the Committee within five working days of it receiving written notification of its removal from its League. The Committee will consider such application and will place the Club in what it considers at its sole discretion to be the most appropriate League/division for the following Playing Season.

6.4 If a Club (whether a Members' Club or a Company) ceases to be a member of its league and that Club (that is not a New Club as defined at 6.3 above) wishes to be placed within the NLS for the immediately following Playing Season, then unless otherwise determined by the Committee, it may be allowed to make an application to join a League/division below the most recent League/division of which the Club was a member.

In order for consideration to be given to the placement in the NLS by the Club in the immediately following Playing Season, an initial application must be received by the Committee in accordance with the procedures set out at 6.3 above. The application shall be copied to the League of which membership is being requested. The application will be determined by the Committee at its absolute discretion.

In considering any application, the Committee will set out at its sole discretion the requirements to be met by the Club in determining whether to approve the application.

6.5 If two or more Clubs (“the Merging Clubs”) are proposing a transaction or series of transactions that result in the merging or consolidation (“the Proposed Merger”) of those Clubs into one Club (“the Merged Club”) then a formal application to do so must be received by the Committee and the league(s) of which the Merging Clubs are members by 31st December to be valid for the following Playing Season.

A Deed of Agreement, which shall be legally binding on all parties must be submitted to The Association by 31st March in the year immediately following receipt of the application. The Committee shall determine at its absolute discretion where the Merged Club is to be included in the NLS for the following Playing Season subject to the provisions of item 6.5.5 below.

A Deed of Agreement, which shall be legally binding on all parties must be submitted to The Association by 31st March in the year immediately following receipt of the application. The Committee shall determine at its absolute discretion where the Merged Club is to be included in the NLS for the following Playing Season subject to the provisions of item 6.5.5 below.

In arriving at its decision the Committee may apply the following minimum criteria:

6.5.1 The requirements of Standardised Rule 2.9 for the current Playing Season must be met by each of the Merging Clubs. If one or more of the Merging Clubs is subject to an insolvency event then Standardised Rule 2.9.2 shall be applied to such club(s), otherwise Standardised Rule 2.9.1 shall be applied;

6.5.2 The proposed playing name of the Merged Club must be acceptable to the Committee; and

6.5.3 The Merged Club must have security of tenure to a ground that meets the relevant ground grading requirements;

6.5.4 Any other criteria that the Committee may from time to time deem to be appropriate;

6.5.5 The Merged Club will ordinarily be placed at the lower of the Steps at which the Merging Clubs ended the Playing Season in which the application is made. For the purposes of this Regulation, if one of the Merging Clubs has finished that Playing Season in a relegation place, then they will be deemed to have ended the Playing Season at the Step to which they would have been relegated without the Proposed Merger proceeding.

Any decision regarding whether a proposed transaction or series of transactions falls to be considered under this Regulation shall be determined by the Committee at its absolute discretion.

## **7. PLACEMENT OF A CLUB INTO A LEAGUE**

---

7.1 Usually a club can only enter the NLS at Step 6 via a Feeder League. However a League may seek approval from the Committee to receive a club or team not currently in membership of a League within the NLS provided that there is: (a) exceptional circumstances, (b) a vacancy within its constitution, (c) the club meets the entry criteria and (d) promotion and relegation issues have been satisfied. Such request must be received from the league by no later than 1st February. Any decision shall only be capable of Appeal to The Association by the affected League.

7.2 Reserve teams, including a team from a club or Club which is not considered by the Committee to be sufficiently separate from another club or Club, will not be permitted to compete above Step 6 in the NLS. There must be a minimum of two Steps between a first and

reserve team. This does not apply at Steps 6 and Feeder League level. No two teams from the same Club can play at the same Step.

7.3 Teams from Higher Education or Further Education establishments are not permitted to compete above Step 5. This does not prevent any such establishment forming a Club which complies with all entry criteria and which is separate from the establishment itself.

7.4 Where a Club moves from one League to another, for whatever reason, the League from which it is being moved must provide the League to which the Club is being moved with a certificate confirming that the Club being moved does not owe any money or other property of any nature to the League from which it is being moved. The Club being moved cannot compete in its new League until such certification has been provided and the onus will be on the Club being moved to ensure that it has cleared all indebtedness to its previous League.

## **8. PROCEDURES FOR THE DETERMINATION OF ANY MATTER, DISPUTE OR DIFFERENCE BY THE COMMITTEE**

---

8.1 The Committee may adopt such procedures for the determination of any matter, dispute or difference as it considers appropriate and expedient, having regard to the aims and objectives set out at Regulation 2. The Committee may require the attendance at a meeting or the written observations of any League or Club, as it considers appropriate to assist its determination.

8.2 (a) Any dispute or difference between a League and a Club relating to promotion and relegation issues, lateral movement and/or other eligibility criteria must be referred for determination to the Committee; such determination shall be final and binding subject only to Arbitration in accordance with Rule K.

(b) Any decision of the Committee shall be subject to a right of appeal to an Appeal Board. The decision of that Appeal Board shall be final and binding on all parties.

All referrals of appeals shall be conducted in accordance with the Appeal Regulations save for appeals in relation to Ground Grading decisions where the procedures are outlined in 8.2(c) below.

(c) Procedures for Ground Grading Appeals

(i) The ratification of the Ground Grading decision must be sent in writing within 14 days of the final decision date, currently 31st March.

(ii) Appeals in relation to Ground Grading Appeals must be submitted to The Association's Judicial Services Department within seven days from the date of the written decision outlining the Grounds of Appeal, with a copy to The Association's National League System Department.

(iii) The Committee will appear before an Appeal Board with the Appellant to respond to the application and there is no requirement to make a formal response in writing.

(iv) In all cases the Committee will submit any documentation including the Ground Grading report that was considered by the Committee in relation to the Ground Grading decision, (which the appellant would already have received).

(v) Dates would be set annually in advance by the Judicial Services Department for the hearing of Ground Grading appeals and details of the dates would be notified to all Clubs in the correspondence from the Committee notifying the decision of the Ground Grading assessment.

8.3 The Committee may, at its discretion, delegate the resolution of any matter, dispute

or difference arising under these Regulations to anybody it considers to be appropriate (including a sub- committee or commission which may include members of council not on the Committee or a body constituted by a County Football Association).

## 9. CRITERIA FOR THE PARTICIPATION IN PLAY-OFF MATCHES

---

In order to qualify for Play Off Matches a Club must comply with:

- Security of Tenure – see Standardised Rule 2.3.2
- Solvency – see Standardised Rule 13.B.2
- Ground Share requirements, i.e. not ground share in order to gain promotion – see 5.7 of these Regulations
- Ground Grading – see 5.8 of these regulations and the relevant criteria document

## 10. ARBITRATION

---

The fact of participation in the NLS and signifying agreement to be bound by the Regulations shall constitute an agreement between each League and Club to refer to Arbitration any challenge in law arising out of, or in relation to, the Regulations in accordance with the provisions of FA Rule K.

## 11. LICENSING SYSTEM

---

A Club shall be required to hold a Licence to be a member of a Competition at Steps 1 to 4 of the NLS.

(a) The Association shall through the appropriate Committee operate a Licensing System to apply to all Clubs competing at Steps 1 to 4 of the National League System ("NLS"). A Club is required to hold a Licence to be a member of a Competition at Steps 1 to 4 of the NLS. The Licensing System to be applied is as shown at an Appendix to the Standardised Rules.

(b) Each Competition at Steps 1 to 4 of the NLS shall be responsible for the operation, assessment and granting of the Licence in respect of its Clubs through the Standardised Rules as approved by a Committee of The Association. A Competition at Steps 1 to 4 shall take all reasonable and practical steps to co-operate with The Association in the application of the Licence.

(c) In the event that a Competition fails to apply the Licensing System set out in the Standardised Rules to the satisfaction of The Association, then The Association shall have the powers of the Board of that Competition as set out in the Standardised Rules to apply such Licensing System. In addition, The Association may, if necessary, bring an action against the Competition for Misconduct under the Rules of The Association.

## 12. PRECEDENCE

---

In the case of conflict between the Regulations for the Operation of the NLS and the Rules, the Regulations take precedence.

## LEAGUES/DIVISIONS AT STEPS 5 AND 6 OF THE NLS (SEASON 2020-21)

---

STEP 5	STEP 6
--------	--------

Combined Counties League Premier Div Eastern Counties League Premier Div Essex Senior League Hellenic League Premier Div Midland League Premier Div North West Counties League Premier Div Northern League Div 1 Northern Counties East League Premier Div Southern Counties East League Premier Div Spartan South Midlands League Premier Div Southern Combination Football League Premier Div United Counties League Premier Div Wessex League Premier Div Western League Premier Div	Combined Counties League Div 1 East Midlands Counties League Eastern Counties League Div 1 North Eastern Counties League Div 1 South Hellenic League Div 1 East Hellenic League Div 1 West Midland League Div 1 Northern Counties East Div 1 North West Counties League Div 1 North North West Counties League Div 1 South Northern League Div 2 South West Peninsula League Premier Div East South West Peninsula League Premier Div West Spartan South Midlands League Div 1 Southern Combination Football League Div 1 Southern Counties East League Div 1 United Counties League Div 1 Wessex League Div 1 West Midlands (Regional) League Premier Div Western League Div 1
--	--

## APPENDIX A

### Regional NLS Feeder League Regulations

#### 1. League Structure

1.1 The Leagues currently operating as Feeder Leagues are set out at the end of the Appendix.

1.2 At Feeder League level the maximum number of Clubs in each division shall be determined by the Sanctioning Authority taking into account all relevant factors. In any case, this shall not be more than 18 Clubs. The minimum amount of Clubs should be 14.

1.3 Any league wishing to become a Feeder League must apply to the FA Leagues Committee by 31st December in the relevant year in such form and /or providing such information as shall be required by the Committee from time to time. The decision as to whether or not a league should be admitted as a Feeder League shall be made by the Committee.

#### 2. Rules and Regulations for Promotion and Relegation

2.1 All Feeder League Clubs seeking promotion to Step 6 must make an application using the prescribed form direct to The Association, copied to their existing League, by 31st December in the relevant year. In order to be considered for promotion Clubs must finish in 1st position in their Feeder League. If the Club finishing in 1st position does not wish to be promoted or fails to meet the entry criteria then the Club finishing in 2nd position will be eligible for promotion. If the Club in 2nd position does not seek promotion or fails to meet the entry criteria then Clubs down to 5th position may be considered for promotion provided that they meet the appropriate entry criteria. Clubs finishing below 5th position may not be considered for promotion and only one Club may be considered for promotion from each League. Each application must be accompanied by the agreed application fee, as determined by the Committee, which is non-refundable.

2.2 Clubs competing in a Feeder League must comply fully with the minimum requirements in force. To be considered for promotion to Step 6, Clubs must meet the requirements of Grade H and attain Grade G by 31st March in the year following promotion. Clubs can be promoted from Feeder Leagues to 6 without floodlights, provided that that all other requirements of Grade H are met by 31st March in the Playing Season in which the Club wishes to gain promotion and that the Club has the following in place:-

- Planning permission granted for floodlights.
- That by 30th September following promotion that floodlights are installed and in working order.
- A development / business plan
- Quotations / estimates for the work to be carried out.
- Funding applications submitted, if required.

Failure to install floodlights in working order by 30th September following promotion will result in a sanction being imposed at the discretion of the League of which the Club is a member. If by 31st March in the year following promotion the floodlights are still not installed then the Club will be a relegated Club and be dealt with accordingly.

#### 3. Placement of a Club in a League

3.1 The matter of placements for Clubs in Feeder Leagues is for the League in conjunction with its Parent Association at the point of sanction. This

is save for Clubs being allocated to Feeder Leagues having been relegated from Step 6, which is a matter for the Committee.

3.2 Reserve and 'A' teams may participate in Feeder Leagues. Clubs should note the provision concerning Reserve teams at Step 6 under Regulation 7.2 in the 'National League System Regulations'.

**Leagues with Regional NLS Feeder League status - 2020-21 season:**

Anglian Combination Premier Div

Bedfordshire County League Premier Div

Cambridgeshire County League premier Div

Central Midlands League Div North

Central Midlands League Div South

Cheshire League Premier Div

Devon League Premier Div East

Devon League Premier Div West

Dorset Premier League

Essex & Suffolk Border League Premier Div

Essex Olympian League Premier Div

Gloucestershire County League Premier Div

Hampshire Premier League Senior Div

Herts Senior County League Premier Div

Humber Premier League Premier Div

Kent County League Premier Div

Leicestershire Senior League Premier Div

Lincolnshire Football League Premier Div

Liverpool County Premier League Premier Div

Manchester Football League Premier Div

Mid Sussex Football League Premier Div

Middlesex County League Premier Div

Midland League Div 2

Northamptonshire Combination Premier Div

Northern Football Alliance Premier Div

North Riding Football League Premier Div

Nottinghamshire Senior League Senior Div

Oxfordshire Senior League Premier Div

Peterborough & District League Premier Div

Salop Leisure Football League Premier Div

Sheffield & Hallamshire County Senior League Premier Div

Somerset County League Premier Div

Southern Combination Div Two

Spartan South Midlands League Div 2

St Piran Football League Premier East

St Piran Football League Premier West

Staffordshire County Senior League Premier Div

Suffolk & Ipswich League Senior Div

Surrey Elite Intermediate League Intermediate Div

Thames Valley Premier League Premier Div

Wearside League

West Cheshire League Div 1

West Lancashire League Premier Div

West Midlands (Regional) League Div 1

West Yorkshire League Premier Div

Wiltshire Football League Premier Div

York Football League Premier Div

Yorkshire Football League