



**ST.**  
**GÉORGE'S**  
**PARK**

CONFERENCES & EVENTS

An aerial photograph of St. George's Park football training facility. The image shows several large, modern buildings with blue and white roofs, surrounded by lush green fields and trees. In the foreground, there are several football pitches with white markings and goals. The background shows a rolling landscape under a clear blue sky.

# WELCOME TO THE **HOME OF** **ENGLAND**

## NATIONAL TEAMS

IF YOU ARE LOOKING FOR AN  
UNFORGETTABLE UNIQUE EVENT  
SPACE BACKED BY THE UNSURPASSED  
COMMITMENT TO HOSPITALITY FOR  
WHICH HILTON WORLDWIDE IS GLOBALLY  
RENOWNED THEN LOOK NO FURTHER.

Home to England's 28 national teams, St. George's Park provides a world-class training environment for any team, athlete or business striving for excellence.

Set in a single, secure location across 330 acres of idyllic Staffordshire countryside, the £105 million facility boasts a range of outstanding training pitches, a four star Hilton hotel, a state-of-the-art performance centre as well as an outdoor team building complex.

Now established as a leading conference and events venue in the midlands, since opening in 2012, we have already hosted over 6,200 events for the likes of Nike, BT, Premier League, Continental, Molson Coors, Vauxhall and many more.

# HILTON

## AT ST. GEORGE'S PARK

The inspiring and versatile facilities are ideal for gatherings of all kinds and sizes, from intimate meetings to conferences for up to 500 people.

- {+} The Sir Bobby Robson Ballroom
- {+} The Futsal Arena
- {+} Lecture theatre
- {+} 19 flexible meeting rooms
- {+} The Crossbar and lounge
- {+} Restaurant and private dining
- {+} Health Club and Spa
- {+} The Centre Circle - proudly serving Starbucks
- {+} 228 Guest rooms including 11 suites

MEET, MOTIVATE AND  
CELEBRATE IN A SPECIAL  
SETTING IN PURSUIT OF BEST  
PRACTICE, INNOVATION AND  
PERFORMANCE EXCELLENCE.



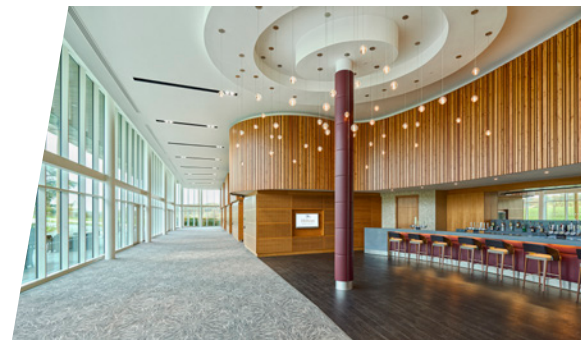


# THE ULTIMATE EVENT EXPERIENCE



## THE SIR BOBBY ROBSON BALLROOM

- [+] Capacity: 500 people or 420 people banquet style
- [+] Can be divided into four separate, fully equipped rooms
- [+] Ambient mood lighting, an in-built PA system and 5 large projection screens including in-built ceiling projectors
- [+] Weight loaded floors
- [+] Width: 15m x Length: 31m x Height: 5.5m
- [+] Area: 416m<sup>2</sup>
- [+] Includes a dedicated foyer breakout area with its own private bar ideal for drinks receptions and buffets





## THE FUTSAL ARENA

{+} When it's not home to the England Futsal team, this huge indoor venue can be converted into a unique and exceptional venue for bespoke events

{+} A versatile blank canvas

{+} Capacity: 1500 people

{+} Width: 40m x Length 60m x Height: 8.15m

{+} Area: 2,400m<sup>2</sup>



# CREATE IMPACT





## THE CENTRE CIRCLE COFFEE LOUNGE

- {+} Proudly serving Starbucks Coffee
- {+} Convenient lounge and meeting area



## LECTURE THEATRE

- {+} 90 seats with built-in pull out writing tables
- {+} State-of-the-art projection equipment
- {+} Ceiling-mounted 159" screen
- {+} In-built PA system

## MEETING ROOMS

- {+} 19 flexible meeting rooms
- {+} Ideal for seminars
- {+} Accommodates 12-90 delegates
- {+} Including 49" plasma screens with Apple TV for presentations
- {+} In-room call buttons for immediate assistance

## THE CROSSBAR AND LOUNGE

- {+} Enjoy drinks, a modern day afternoon tea or a gourmet coffee in this relaxed venue. The perfect place to join friends or colleagues for a light lunch
- {+} Menu includes local favourites alongside British classics
- {+} Open daily, 9.00am – 1.00am

## RESTAURANT AND PRIVATE DINING

- {+} Modern yet stylish restaurant with spectacular views across the Staffordshire countryside
- {+} Caters for up to 130 diners in one sitting
- {+} Hot buffet service at lunch
- {+} À la carte menu served during the evening



# RELAX

AND UNWIND



## HEALTH CLUB & SPA

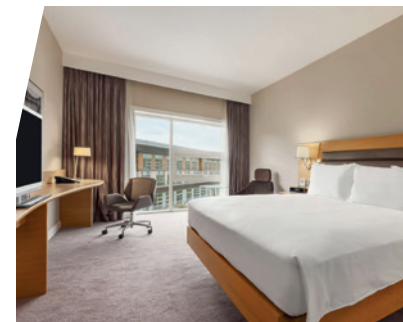
-----

- {+} Spa includes 17m swimming pool, bubble pool, foot spas, sauna, steam room as well as four treatment rooms
- {+} The gym includes latest Cardiovascular Technogym equipment, resistance machines and a free weights area
- {+} Open daily 6am - 10pm

## GUEST ROOM

-----

- {+} 228 contemporary, air-conditioned guest rooms including 11 suites
- {+} Spectacular views of either the surrounding countryside or St. George's Park courtyard
- {+} Complimentary parking
- {+} Free wi-fi
- {+} 42" TV with Sky





# BEHIND- THE-SCENES TOURS

The St. George's Park tour gives you the unique chance to go behind-the-scenes at England's training home. Throughout your guided tour you will see elite outdoor pitches including Sir Bobby Charlton Wembley replica pitch, the impressive Sir Alf Ramsey indoor 3G pitch as well as the state-of-the-art sports science and performance facilities.

You will also see other areas of the National Football Centre including the multi-sport indoor hall that is used for Futsal, an elite changing room, the autograph wall, areas of the hotel where the teams stay, plus much more.

**£9.00** PER PERSON  
*(Gift vouchers are available on request)*



**"ST. GEORGE'S PARK HAS BEEN REVOLUTIONARY FOR US. IT GIVES US A TRAINING GROUND. IT MEANS WE CAN SHARE IDEAS ACROSS THE MALE AND FEMALE GAME, ACROSS THE DEVELOPMENT TEAMS AND SENIOR TEAMS AND ACROSS COACH EDUCATION."**

**DAN ASHWORTH**  
FA Technical Director





## INCLUDES

- {+} A tour of the National Football Centre
- {+} Use of a changing room
- {+} Use of an indoor or outdoor 3G pitch for your session
- {+} A 1 hour FIFA 11+ Warm up and dynamic movement session on the running track. A complete warm-up programme that reduces injuries as well as teaching correct posture and good body control
- {+} A 90 minute fun-based football activity with an FA Licensed coach, designed to be fully bespoke for your team
- {+} A 1 hour hydrotherapy session taking you through the same routine as a professional sports team. After some stability and recovery work in the vario pool, you will also experience the physiological benefits when using the hot and cold contrast pools

## REQUIREMENTS

- {+} Groups of 12+
- {+} Suitable for anyone aged 12+

## OPTIONAL EXTRAS\*

- {+} Upgrade to an elite changing room **£20.00**
- {+} A tour of the National Football Centre for spectators **£9.00 PER PERSON**
- {+} Packed lunch (various catering options available)
- {+} A selection of St. George's Park merchandise and souvenirs

**£62.00** PER PERSON\*\*

\*Subject to availability    \*\* All prices are inc. of VAT

# THE ULTIMATE SGP EXPERIENCE

WHAT WOULD LIFE BE LIKE IF YOU PLAYED FOR ENGLAND? FIND OUT. FOLLOW A TYPICAL DAY IN CAMP FROM TRAINING TO RECOVERY - THE ULTIMATE WAY TO EXPERIENCE ST. GEORGE'S PARK.



# TOURNAMENT EXPERIENCE

GET YOUR HANDS ON SOME SILVERWARE.  
EXPERIENCE TOURNAMENT FOOTBALL AT ENGLAND'S  
WORLD-CLASS TRAINING COMPLEX, AND GUIDE  
YOUR TEAM TO CUP GLORY.

## INCLUDES

- {+} A tournament director
- {+} Medical cover
- {+} FA qualified referees
- {+} Changing facilities
- {+} Medals for 1st, 2nd and 3rd placement
- {+} Trophy for the winning team
- {+} Use of a 3G pitch
- {+} A series of fixtures against teams of the same age group (5v5 or 7v7 format)

## REQUIREMENTS

- {+} Squads of 7-10 players
- {+} 8-16 teams per tournament
- {+} Mixed sex football is permitted up to and including under 18s
- {+} Age banding rules apply aligned to The FA code of rules for youth football and therefore participating players within each age group MUST be within a 2-year age banding
- {+} Most popular with corporate bookings

**£35.00** PER PERSON\*

\*Subject to availability. All prices are inc. of VAT



## INCLUDES

- {+} Private usage of the elite FIFA 2 star rated indoor 3G pitch
- {+} A 2 hour booking, 7.30pm-9.30pm
- {+} Use of 2 changing rooms
- {+} Smaller goals if required to suit small-sided games
- {+} Cones, footballs and bibs

## OPTIONAL EXTRAS\*

- {+} Upgrade to an elite changing room  
**£20.00**
- {+} A tour of the National Football Centre for spectators  
**£9.00 PER PERSON**
- {+} Teas and coffees upon arrival  
**£1.50 PER PERSON**
- {+} Bottled water  
**£1.20 PER PERSON**
- {+} Match officials  
**COST VARIES**

**£900.00** PACKAGE RATE\*\*

\*Subject to availability \*\*All prices are inc. of VAT

# INDOOR 3G PITCH HIRE

YOUR CHANCE TO PLAY ON ENGLAND'S IMPRESSIVE  
INDOOR 3G PITCH. PERFECT FOR CORPORATE AND  
GROUP BOOKINGS.





# OUTDOOR **LEADERSHIP CENTRE**

With a wide range of activities aimed at developing high performing teams, the Outdoor Leadership Centre at St. George's Park offers you the chance to create a memorable team event or take a break from your conference in a unique setting. Sessions can include non-physical to slightly physical to physical challenges such as the low and high ropes course, archery and ground based initiative tasks which are more cerebral in approach.

Maintaining high levels of energy and attention throughout your conference or event is critical to how successfully your key messages are received and we'll support you to achieve this. The breakout sessions within any conference can play an important role, ensuring that your delegates feel motivated and open to the ideas and information you convey.







## TEAM BUILDING AND CONFERENCE ACTIVITIES:

-----

- { + } A 40ft climbing tower
- { + } Multi-activity high ropes course
- { + } An extensive range of low ropes activities
- { + } Powerfan freefall experience
- { + } Archery
- { + } Initiative exercises
- { + } Indoor team activities
- { + } Wake up challenge
- { + } Boomwhackers
- { + } Packages from 1 hour to 1 day





St. George's Park's central location in the heart of the Midlands and close proximity to two nearby airports makes it easily accessible for both national and international visitors. It's only 90 minutes by train from London with the choice of two local stations at Lichfield and Derby.

## GETTING HERE

By air:

- {+} 34 miles from Birmingham Airport
- {+} 29 miles from East Midlands Airport

By train:

- {+} 6 miles from Burton-Upon-Trent
- {+} 14 miles from Lichfield (direct route to London Euston Station)
- {+} 19 miles from Derby (direct route to London St. Pancras Station)
- {+} 27 miles from East Midlands Parkway

## IN THE REGION

- {+} The National Forest
- {+} Alton Towers theme park
- {+} Drayton Manor theme park
- {+} The National Brewery Centre
- {+} Nottingham Castle
- {+} The Peak District
- {+} Uttoxeter Racecourse
- {+} Nottinghamshire County Cricket Club (Trent Bridge)
- {+} Branston Golf Club





For more information or to discuss  
your requirements please contact:

**01283 576200**

**SGPENQUIRIES@THEFA.COM**



**FOR ALL**

ST. GEORGE'S PARK, NEWBOROUGH ROAD, NEEDWOOD, BURTON-UPON-TRENT, STAFFORDSHIRE, DE13 9PD

**WWW.THEFA.COM/SGP**