



**ENGLAND  
FOOTBALL**

# **GRASS PITCH IMPROVEMENTS**

*A GUIDE TO THE SUPPORT THAT WEST RIDING FA CAN PROVIDE TO YOUR CLUB/ORGANISATION*



# CONTENTS

TOPIC	PAGE NUMBER
<b>Why Grass Pitches?</b>	<b>3</b>
<b>Grass Pitch Capacity</b>	<b>4</b>
<b>PitchPower</b>	<b>5</b>
<i>What is PitchPower?</i>	<b>5</b>
<i>How to Complete a PitchPower Inspection?</i>	<b>6</b>
<i>Pitch Inspection Equipment</i>	<b>10</b>
<i>Using Your PitchPower Report</i>	<b>11</b>
<b>Football Foundation Funding</b>	<b>12</b>
<i>Grass Pitch Maintenance Fund</i>	<b>13</b>
<i>Grass Pitch Maintenance Machinery/Equipment</i>	<b>17</b>
<i>Pre-Application and Post-Award Support from West Riding FA</i>	<b>19</b>
<i>Small Grants</i>	<b>20</b>
<b>Training and Workshops</b>	<b>21</b>
<i>West Riding FA Workshops</i>	<b>21</b>
<i>Grounds Management Association (GMA) Training &amp; Courses</i>	<b>22</b>
<b>West Riding FA Groundskeeping Community</b>	<b>23</b>
<b>Useful Contacts</b>	<b>24</b>





# WHY GRASS PITCHES?

*Without a good quality pitch to play on, there can be no game. The poor quality and availability of pitches remains the number one frustration in grassroots football.*

*The Football Association (FA), Football Foundation and the Grounds Management Association (GMA) are working in partnership to improve the quality of grass pitches across the country. By 2030, we are aiming for 20,000 'Good' quality grass pitches to meet the demands of grassroots football in England.*

*The purpose of this guide is to highlight the work that is being done by West Riding FA at a local level to improve the quality of our grass pitches and detail the support available to clubs/organisations.*



## BEFORE FOOTBALL FOUNDATION FUNDING



## AFTER FOOTBALL FOUNDATION FUNDING

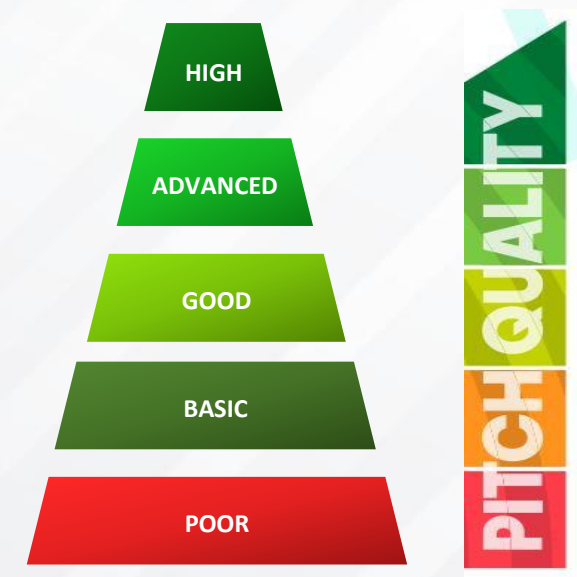


# GRASS PITCH CAPACITY

The capacity for pitches to regularly be used for competitive play, training and other activity over a season is most often determined by quality.

The FA and Grounds Management Association (GMA) have set a standard number of matches that each grass pitch type should be able to accommodate without it adversely affecting its quality, this is detailed in the table below.

This guide can help to reduce overplay of pitches (where possible) as overuse can negatively affect pitches causing them to be unusable for large parts of the season.



Pitch Quality (as per GMA Performance Quality Standards framework)	Matches per week (without adversely affecting pitch quality)		
	Adult Pitches	Youth Pitches	Mini Pitches
Good (or above)	3	4	6
Basic	2	2	4
Poor	1	1	2





# PITCHPOWER

## What is PitchPower?

*PitchPower* is the Football Foundation's revolutionary web app for inspecting and improving grass pitches. Designed with a grassroots volunteer user in mind, PitchPower puts the power in your hands, making it easy to sign up and carry out grass pitch inspections using your mobile phone or tablet.

Once you've completed your pitch inspection you will receive a bespoke, detailed assessment report from the experts at the Grounds Management Association (GMA). This report will provide you with a Performance Quality Standard (PQS) score for each of your pitches, along with expert advice and recommendations on how to improve the quality of your grass pitches.

This assessment report is also your key to unlocking any funding that you may be eligible for to implement the recommendations in your report or purchase machinery/equipment to improve the quality of your grass pitches.

PitchPower is very user-friendly, however if you require some support completing a PitchPower inspection then please contact [daniel.wiseman@westridingfa.com](mailto:daniel.wiseman@westridingfa.com)



# Power up your grass pitch

Sign up to the  
PitchPower app  
to improve your  
grass pitch



# PITCHPOWER

## How to Complete a Pitchpower Inspection

### Before you start

You will need the following items to complete a PitchPower inspection:

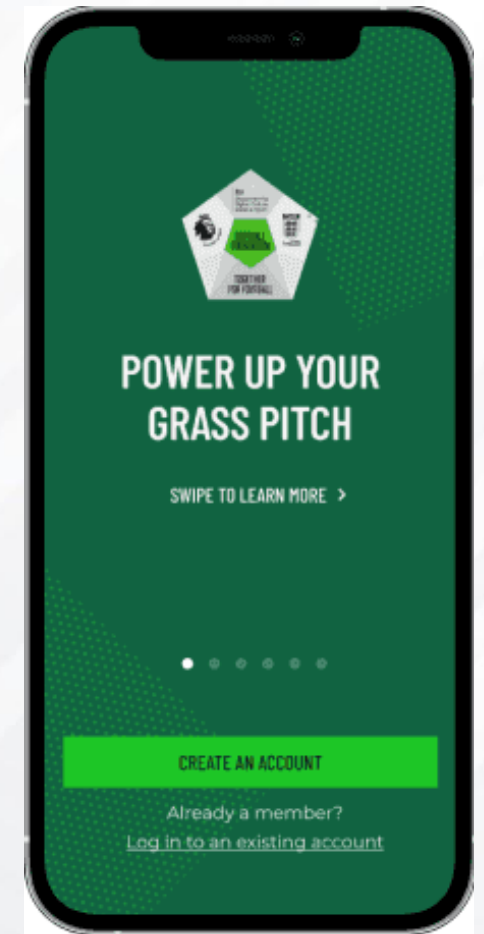
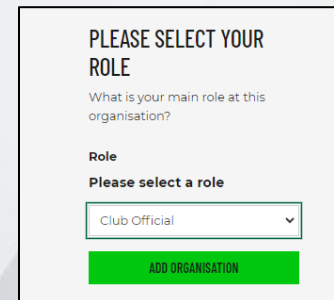
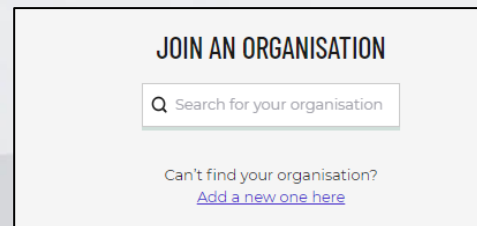
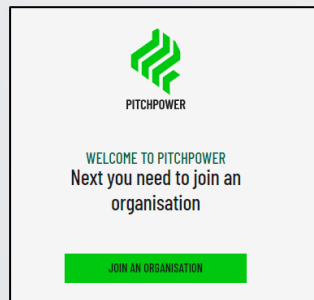
- 1) Mobile phone or tablet
- 2) A tape measure
- 3) Either of the following:
  - A spade
  - A soil sampler and mallet

**A PitchPower inspection can be completed by following the below steps.**

**Please note that steps 1-7 can be completed from the comfort of your own home (either on a computer/phone/tablet), rather than having to be on site. Steps 8 onwards will need to be completed on site, using the 3 items mentioned above.**

**Step 1** – Create a PitchPower account at <https://pitchpower.org.uk/> and log in (or simply log in if you have already created an account)

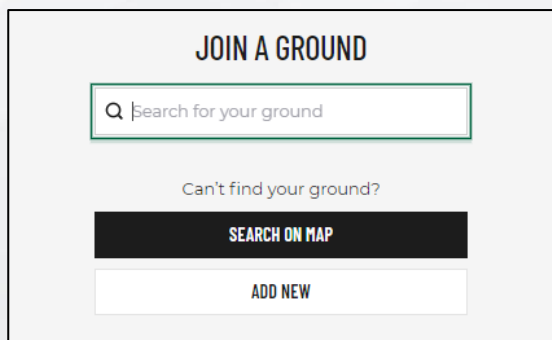
**Step 2** – Join your organisation by searching using the name of your club/organisation and then select your role within that organisation.



# PITCHPOWER

## How to Complete a Pitchpower Inspection

**Step 3** – Go to your organisation dashboard and then select 'Join a ground'. Search for your ground using the search tool and then select 'Join ground' (you can do this for any grounds your organisation use) and then select 'Go to ground' which should take you to a screen that looks like the below image.



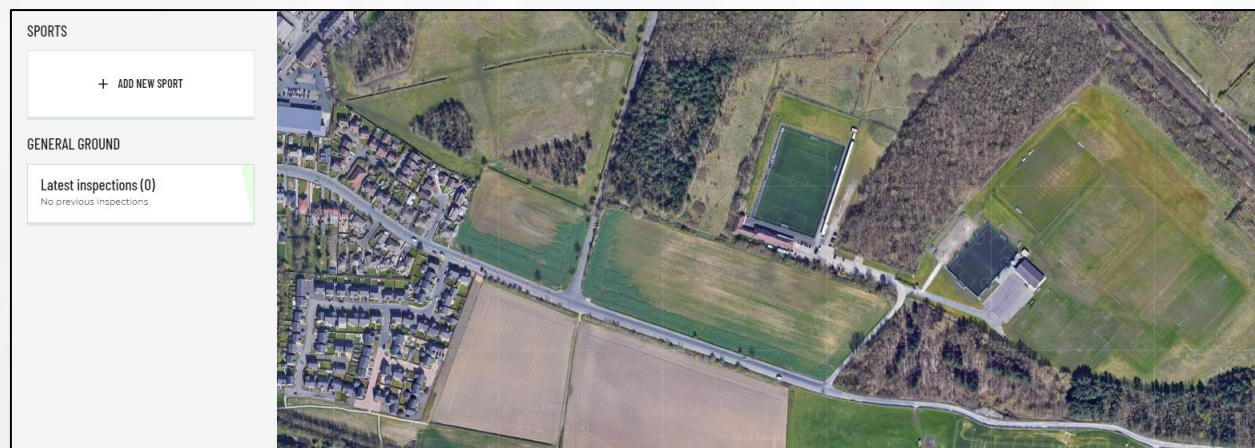
JOIN A GROUND

Search for your ground

Can't find your ground?

SEARCH ON MAP

ADD NEW



**Step 4** – Select 'Add new sport' and then 'Football' and add all pitches on site.

**Step 5** – Complete the following sections:

**Manage Pitches** - This is where you can add/edit your pitches on site to reflect how the pitches on your site are actually set up and placed in the correct location

**General Ground Maintenance** - This may have some information that is already completed if anyone has previously added information for this site, please amend as necessary to ensure all information submitted is accurate and up to date.

**General Ground Equipment** - This may have some information that is already completed if anyone has previously added information for this site, please amend as necessary to ensure all information submitted is accurate and up to date.



# PITCHPOWER

## How to Complete a Pitchpower Inspection

**Step 6** – Select 'Begin Inspection' which will take you to a screen that contains the following sections that require completing (they will show as green once completed):

GENERAL GROUND INFORMATION	
SECTION INCOMPLETE	Inspection ground questions
SECTION INCOMPLETE	General ground maintenance
SECTION INCOMPLETE	General ground equipment

**Step 7** – From this step onwards you will need to be outside on site to complete the inspection.

Please note, you are looking at approximately 15-20 minutes per pitch to complete the following, we would suggest where possible having two of you there to help make the process as smooth as possible (one person taking the measurements, one person inputting the information into PitchPower etc.).

Select one of your listed pitches e.g. 'Pitch 10' (making sure you are selecting the pitch you are looking to inspect first) and complete the 'General' section (as shown in the image to the right). PitchPower will guide you through the information you need to input.

PITCH 10	
INSPECTION DUE NOW	
GENERAL PITCH	
SECTION INCOMPLETE	Pitch maintenance
SECTION INCOMPLETE	<b>General</b>
Roughly 7 minutes	0/6
AREAS	
SECTION INCOMPLETE	<b>Goal Area 1</b>
Roughly 8 minutes	0/2
SECTION INCOMPLETE	<b>Centre circle</b>
Roughly 8 minutes	0/2
SECTION INCOMPLETE	<b>Goal Area 2</b>
Roughly 8 minutes	0/2
CONTINUE	





# PITCHPOWER

## How to Complete a Pitchpower Inspection

**Step 8** – You will need to complete the other remaining sections for each pitch:

**Goal Area 1**  
**Centre Circle**  
**Goal Area 2**

Within each of these areas you will be asked to input information and photos of the following:

**Grass Height**  
**Grass Coverage (to also identify weed coverage)**  
**Soil Sample (to identify topsoil depth, thatch depth and root depth)**

It is essential that you include a tape measure within the photo of grass height and within the photo of the soil sample.

Please use the following useful links for video guidance on:

[How to take a soil sample](#)

[How to measure root depth](#)

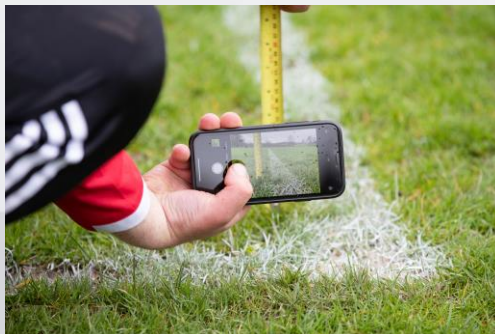
[How to measure thatch depth](#)

[How to take a photos of grass height](#)

[How to take a photo of grass coverage](#)

**Step 9** – Once you have completed the required steps for each of your pitches on site (and all sections are showing as green and complete) you will have the option to 'Submit inspection'.

Once you've submitted the inspection you will receive the completed PitchPower report within around 3 weeks, this will be sent to the email used to submit the PitchPower inspection. This will provide you with a detailed list of bespoke maintenance recommendations to improve/sustain the quality of your pitch.





## Pitch Inspection Equipment

As mentioned previously, the following items are required to complete a PitchPower inspection:

- 1) Mobile phone or tablet
- 2) A tape measure
- 3) Either of the following:
  - A spade
  - A soil sampler and mallet

Whilst using a spade is no problem at all, using a soil sampler and mallet can help to make the process quicker, easier, more consistent and make less of a mark on your pitches.

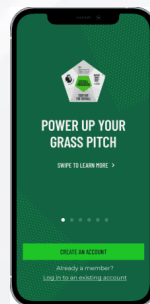
Should you wish to purchase a soil sampler and mallet you can access a discount on the following products via [BMS Products](#):

**Impact Soil Sampler** – <https://www.bmsproducts.com/shop/turf-care-hand-tools/soil-samplers/impact-soil-sampler/>

**Deadblow mallet** – <https://www.bmsproducts.com/shop/turf-care-hand-tools/general-purpose-rakes-tools/blue-strike-deadblow-mallet/>

To access the discount, you will need to enter a promo code **FF2021** at checkout.

Clubs/organisations on the Football Foundation's Grass Pitch Maintenance Fund are able to claim the purchase of the mallet and soil sampler as an eligible purchase as part of your grant funding.





# PITCHPOWER

## Using Your PitchPower Report

*When you receive your PitchPower report, take the time to have a read through it in full.*

*The report provides you with a detailed list of maintenance advice that can be used to guide future maintenance for the site (listed in priority order) and will also list any equipment/machinery that could be purchased to benefit the site further.*

*The report will also give you a PQS score for each of your pitches.*

*We would suggest sharing this report with:*

- *Other club officials (e.g. at a committee meeting)*
- *The person/organisation who maintains the site (e.g. a club volunteer or local pitch maintenance contractor)*
- *Any other users of the site (e.g. another football club if playing from a shared site)*

*Once you have read and understood the information within the report, you may be in a position to apply for Football Foundation funding that will allow you to implement the maintenance recommendations and/or purchase machinery/equipment.*

*Further information on funding that may be available is detailed within this document, however if you are unsure on where to start please contact [daniel.wiseman@westridingfa.com](mailto:daniel.wiseman@westridingfa.com)*

Maintenance	Equipment
Attention required in these areas:	Attention required in these areas:
<a href="#">Pest Management &gt;</a>	<a href="#">Compact tractor &gt;</a>
<a href="#">Goal mouth repairs (In season) &gt;</a>	<a href="#">Mowing equipment &gt;</a>
<a href="#">Decompaction &gt;</a>	<a href="#">Combination turf grooming tool &gt;</a>
<a href="#">Deep Slitting &gt;</a>	<a href="#">Line marker &gt;</a>
<a href="#">Scarification &gt;</a>	<a href="#">Deep Slicer &gt;</a>
<a href="#">Mowing &gt;</a>	
<a href="#">Surface Grooming &gt;</a>	
<a href="#">Overseeding (In Season) &gt;</a>	
<a href="#">Application of fertiliser &gt;</a>	

SCARIFICATION	
Frequency: 1 x per year	Thatch layers can often result in a very saturated upper 25mm in the soil profile after prolonged rainfall where the profile at a depth of 100mm can be relatively dry. Surface water is often retained by any presence of thatch. However, most recreational pitches have thatch layers of 10mm-15mm. The site should be scarified prior to any over-seeding to help create a seed bed for perennial ryegrass, that should be applied using a disc-seeder soon after scarifying. On sites without irrigation, it is recommended that scarification is not carried out too aggressively. Other benefits to scarifying include a reduction of broad leaf weeds, moss, and undesirable weed grasses.
Recommended for: Whole Ground	
Est Cost: £350	
	<a href="#">LEARN MORE ABOUT SCARIFICATION &gt;</a>

Map Key	Pitch Name	PQS Score
1	PITCH 1	● Advanced - 64%

# FOOTBALL FOUNDATION FUNDING

*The Football Foundation are the charity of the Premier League, The FA and Government. They deliver outstanding grassroots sports facilities, which means better games and more players - helping transform communities where need is greatest and impact will be strongest.*

*West Riding FA work closely with the Football Foundation and where applicable can support your club/organisation to access funding to improve your facilities.*

*Over the next few pages we have detailed some of the different Football Foundation funds that may be open to your club/organisation – primarily focusing on those relating to grass pitch improvements.*

*Should you wish to discuss any of these funds further, or if you would like some guidance through the application process, please contact [daniel.wiseman@westridingfa.com](mailto:daniel.wiseman@westridingfa.com)*





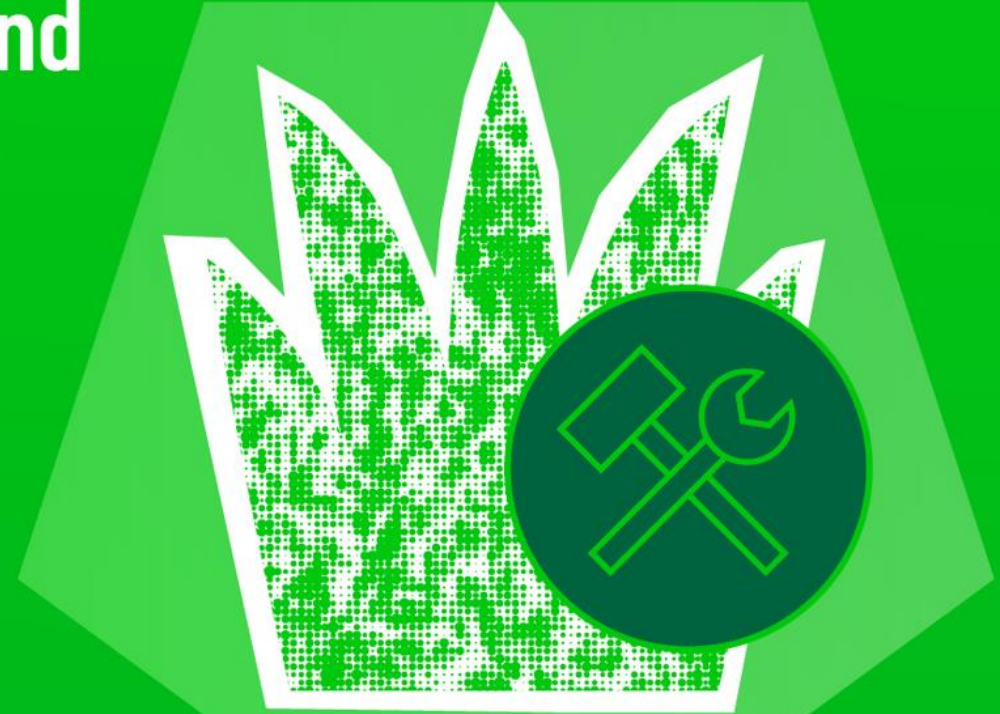
# FOOTBALL FOUNDATION FUNDING

## Grass Pitch Maintenance Fund

- The aim of the fund is to improve the quality of those grass pitches to the Grounds Management Association (GMA) Performance Quality Standard (PQS) of 'Good' or above, and sustain those that are already at a 'Good' level.
- Your PitchPower assessment report will provide a **Performance Quality Standard (PQS)** for each pitch – this will determine how much funding is available per pitch as funding falls into two categories – **Enhance** or **Sustain**.
- The Football Foundation will award a **tapered 67% grant** towards the works over a 6-year period on a sliding scale. Grants are paid annually for six years, but tapered down during that time (detailed on the following page). Tapered means that the Football Foundation will pay a reduced percentage of the initial grant value every two years with the eligible organisation making up the difference.
- The Grass Pitch Maintenance Fund allows clubs/organisations to help **purchase materials** and engage **professional contractors** over a 6-year period to increase the levels of maintenance works carried out on their grass pitches.
- The funding is to be used to carry out recommendations in your PitchPower assessment report, which can include:
  - Contractor works (decompaction, slitting, scarification)
  - Purchasing of materials (seed or fertiliser)
- Further information can be found [here](#).



## Grass Pitch Maintenance Fund



Check out the full line-up of funding opportunities you may be eligible for.



# FOOTBALL FOUNDATION FUNDING

## Grass Pitch Maintenance Fund: Yearly Grant Breakdown

ENHANCE – for pitches with a PQS of 'basic' or below							
PITCH SIZE	FOOTBALL FOUNDATION GRANT CONTRIBUTION PER PITCH (inc. VAT)						TOTAL GRANT AMOUNT
	YEAR 1*	YEAR 2*	YEAR 3**	YEAR 4**	YEAR 5***	YEAR 6***	
11v11	£3,200	£3,200	£2,133	£2,133	£1,067	£1,067	£12,800
9v9	£2,560	£2,560	£1,707	£1,707	£853	£853	£10,240
MINI-SOCCER	£1,920	£1,920	£1,280	£1,280	£640	£640	£7,680
	<i>*100% FF contribution towards total project costs</i>		<i>**67% FF contribution towards total project costs</i>		<i>***33% FF contribution towards total project costs</i>		<i>67% FF Contribution towards total project costs</i>

SUSTAIN – for pitches with a PQS of 'good' or higher							
PITCH SIZE	FOOTBALL FOUNDATION GRANT CONTRIBUTION PER PITCH (inc. VAT)						TOTAL GRANT AMOUNT
	YEAR 1	YEAR 2	YEAR 3	YEAR 4	YEAR 5	YEAR 6	
11v11	£960	£960	£640	£640	£320	£320	£3,840
9v9	£640	£640	£427	£427	£213	£213	£2,560
MINI-SOCCER	£384	£384	£256	£256	£128	£128	£1,536



# FOOTBALL FOUNDATION FUNDING

## Grass Pitch Maintenance Fund: Eligibility Criteria & Grant T&Cs

### Eligibility

The Grass Pitch Maintenance Fund is open to:

- Grassroots football clubs\*.
- Leagues.
- Charities.
- Education sites (offering community usage on evenings and weekends).
- Town and Parish Councils (that host grassroots football clubs on council-owned sites).
- National League System (Steps 1-6) and Women's Football Pyramid (Tiers 1-4) clubs (only for non-stadia pitches on site that are used solely for community football).

**\*If you're a Football Club looking to apply for Football Foundation funding, only the Chair, Vice-Chair, Secretary or Treasurer of that Club can submit an application form.**

### Additional Criteria / Requirements

- Clubs will require a recent PitchPower report (submitted within the last year) to apply for the Grass Pitch Maintenance Fund.

### Security of Tenure

Security of Tenure (in the name of the organisation applying for funding) will also be required in the form of one of the below:

- Freehold.
- Uninterruptible lease or licence for the next 10 years with landlord's consent to carry out the works.
- Lease or license which has more than 12 months to run and permission from the Landlord (along with a completed ['Landlord and Tenant' form](#)).
- [Grass Pitch Maintenance Agreement pro-forma](#) signed by both parties (if there is no sufficient lease or licence).

**\* Educational Establishments and Town & Parish Councils applying for the Fund will also need to complete a [Grass Pitch Service Level Agreement \(SLA\)](#) to demonstrate the community usage on their sites.**

### Application Process

- The online application process is quick and easy and West Riding FA can support you with this.
- Once your application and supporting documentation has been submitted, you'll receive a confirmation email. Your application will be assessed by the Football Foundation Grant Management Team who'll contact you to discuss your application if they have any queries.
- Applications are usually processed within approx. 4 weeks once they have been submitted providing all relevant information has been submitted.
- You'll then receive an email that your decision letter (and any associated T&Cs) is available for download from your Football Foundation account.

**If accepted onto the Grass Pitch Maintenance Fund, clubs/organisations will need to adhere to the following T&Cs:**

- Complete 2 PitchPower inspections per season for a 10 year period.
- Spend the funding on recommendations from the PitchPower report - routine maintenance works such as cutting and line marking are not eligible purchases.
- Upload proof of grass pitch maintenance spending each year in order to receive the next payment.
- 2 members of the organisation will need to complete the Grounds Management Association (GMA)'s online Level 1 Football Grounds Maintenance course. This short course costs £46 and the certificate of completion will need to be submitted to the Foundation prior to the release of any grant. You can register [here](#).



# FOOTBALL FOUNDATION FUNDING

## Grass Pitch Maintenance Fund: FAQs

### FAQs

We have included the answer to a few common questions below, however the Football Foundation has a comprehensive FAQ section on their website, check this out at [here](#) (this can be found at the bottom of the web page).

#### Can I use my Grass Pitch Maintenance Fund grant to purchase new machinery?

No – there is a separate grant for machinery. Please see the images to the right of this page to see what the Football Foundation will and won't fund as part of the Grass Pitch Maintenance Fund.

#### I am looking to apply for the Grass Pitch Maintenance Fund and for grass pitch machinery, can I do this in one application?

Not currently. Please be sure to submit two separate application forms – one for the Grass Pitch Maintenance Fund and a separate one for Maintenance Machinery & Equipment. This'll speed up the assessment process and allow the Football Foundation to provide you with a decision sooner. Submitting one application form for both types of grants will result in your application needing to be withdrawn and one of the team will be in contact to ask you to re-apply.

#### If I have an 'enhance' grant for my grass pitch and it's improved to a 'Good' standard after Year 2, do I still need to spend the total project value in Years 3 to 5 in order to receive my grant?

No – if your pitch has reached a 'Good' standard after Year 2, you're no longer required to spend the whole of your maintenance project value in Years 3 to 5 to receive your grant. The Football Foundation are giving you the flexibility to spend what you need so that you can get the most out of your grant.

For example, for an 11 v 11 football grass pitch, the annual maintenance budget is set at £3,200. In Year 3 and 4, this is tapered to a £2,133 grant from the Football Foundation (67%) with your contribution being £1,067 (33%). However, if you manage to improve your pitch to a 'Good' level in the first two years, you don't have to spend all of your projected maintenance budget if you don't need to and the Football Foundation will still pay 67% of what your maintenance costs come in at (up to your maximum grant amount). Say your pitch is now rated 'Good' and your maintenance total for Year 3 is £2,500, the Football Foundation will pay £1,675 and you'll contribute £825.

#### What we'll fund

- ✓ Slitting – contractor works
- ✓ Scarification – contractor works
- ✓ Decompaction – contractor works
- ✓ Selective herbicide (weed treatment) – contractor works
- ✓ Fertiliser – contractor works and/or purchase of materials (fertiliser)
- ✓ Overseeding – contractor works and/or purchase of materials (seed)
- ✓ Top dressing – contractor works and/or purchase of materials (topsoil)
- ✓ Soil Sampler – purchase of a soil sampler
- ✓ The hiring of maintenance machinery for works that have been recommended in your PitchPower report - club volunteers operating the machinery must have completed their GMA Level 1 course.

#### What we won't fund

- ✗ Routine maintenance works such as grass cutting, hedge cutting, line-marking and purchase of capital items
- ✗ The purchase of machinery items
- ✗ Machinery repair and maintenance costs
- ✗ Goalpost and net replacement
- ✗ Facility hire
- ✗ In-house staffing and/or volunteer groundsperson cost/salaries





# FOOTBALL FOUNDATION FUNDING

## Grass Pitch Maintenance Machinery/Equipment

*Where we have seen the greatest level of grass pitch improvements is where clubs/organisations have been able to access their own machinery to take on some of the maintenance themselves. Whilst this may not be an option for all clubs/organisations, it is something that can really elevate pitches to the next level.*

*Grants are up to the value of up to £50,000 (for a maximum of 75% of the project cost) to help clubs and organisations purchase machinery and equipment recommended in their PitchPower assessment report.*

*Machinery and equipment may be new or used and all applicants will be required to supply two like-for-like quotations for each item from different suppliers and evidence of partnership funding. More details can be found [here](#) and on the following page.*



# FOOTBALL FOUNDATION FUNDING

## Grass Pitch Maintenance Machinery/Equipment: Eligibility Criteria & Grant T&Cs

### Eligibility:

You don't have to be a football club to apply to the Football Foundation, however grassroots football must be an integral part of your offer.

**\*If you're a Football Club looking to apply for Football Foundation funding, only the Chair, Vice-Chair, Secretary or Treasurer of that Club can submit an application form. When it comes to the acceptance and claiming stages of your grant, the secondary contact nominated to co-sign the required forms must also fulfil one of these roles.**

#### Who is eligible?

- ✓ A not-for-profit football club or voluntary group
- ✓ A Local Authority\*
- ✓ A County FA
- ✓ A Professional Club Community Organisation
- ✓ An educational establishment providing facilities for the community
- ✓ A registered charity
- ✓ A not-for-profit company
- ✓ A community interest company (CIC) or other social enterprise
- ✓ A company limited by guarantee

#### Who is not eligible?

- ✗ An individual or sole trader
- ✗ A national governing body
- ✗ A commercial/for-profit entity
- ✗ A club within the Premier League, Football League, National League System (Step 1 to 6), Women's Football Pyramid (Tier 1 – 4) or the Welsh Premier League
- ✗ Educational establishments providing facilities solely for their students

### Security of Tenure:

- There's no security of tenure requirement for the purchase of pitch maintenance machinery, but the applicant will be liable for the machinery for the length of the five-year clawback period.

### Additional Criteria / Requirements:

- PitchPower report (submitted within the last year) evidencing machinery/equipment need.
- It is expected that the machinery will be covered by suitable insurance and securely stored when not in use.
- Two like-for-like quotations from different suppliers. The Football Foundation doesn't currently have a preferred suppliers list. Applicants should source quotes for pitch maintenance equipment from a reputable dealer.
- Evidence of partnership funding (25%).

### Application Process:

- The online application process is quick and easy and West Riding FA can support you with this.
- Once your application and supporting documentation has been submitted, you'll receive a confirmation email. Your application will be assessed by the Football Foundation Grant Management Team who'll contact you to discuss your application if they have any queries.
- Applications are usually processed within approx. 4 weeks once they have been submitted providing all relevant information has been submitted.
- You'll then receive an email that your decision letter (and any associated T&Cs) is available for download from your Football Foundation account.





# FOOTBALL FOUNDATION FUNDING

## Pre-Application and Post-Award Support from West Riding FA

West Riding FA are here to support you through the Football Foundation funding process from start to finish, to ensure that you are able to benefit fully from the investment into your site and that pitches continue to improve.

The support West Riding FA can offer is as follows:

### Pre-Application Support:

- Initial on-site visit/meeting to understand the issues your grass pitches are facing and to discuss potential Football Foundation funding that you may be eligible for.
- PitchPower guidance (including support in completing an initial PitchPower inspection if you are not comfortable doing so on your own).
- Step-by-step guidance through the online Football Foundation application process.

### Post-Award Support:

- Face-to-face support visits alongside Chris Hunter (Regional Pitch Advisor for the Grounds Management Association), 1 visit within the first few months of entering the fund and then 1 again further down the line. These visits are a great opportunity to reaffirm grant T&Cs, advise on grass pitch capacity/usage, and offer technical advice and suggestions on pitch maintenance/renovations that can be passed on to contractors.
- Signposting clubs/organisations towards other potential funding opportunities (either partnership funding that may be accessible elsewhere or other Football Foundation funds).
- Facilitating workshops and networking opportunities to continue developing grass pitch maintenance knowledge across the grassroots community.

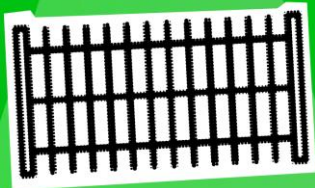




# FOOTBALL FOUNDATION FUNDING

## Small Grants

### Fencing



Check out the full line-up of funding opportunities you may be eligible for.



### Goalposts



Check out the full line-up of funding opportunities you may be eligible for.



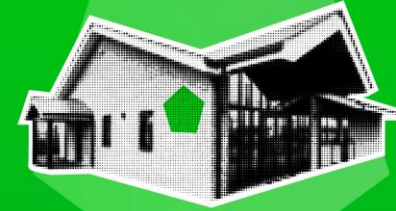
### Portable Floodlights



Check out the full line-up of funding opportunities you may be eligible for.



### Changing Pavilion & Clubhouse Refurbishments



Check out the full line-up of funding opportunities you may be eligible for.



### Storage Containers



Check out the full line-up of funding opportunities you may be eligible for.



*The Football Foundation offer small grants towards all of the above, providing grants up to £25,000 (for up to 75% of total project costs).*

*Further information on all of these small grants and details of how to apply can be found [here](#).*



# TRAINING AND WORKSHOPS

## West Riding FA Workshops

*West Riding FA regularly facilitate workshops (often in partnership with the Grounds Management Association) to upskill the local groundskeeping workforce.*

*Our workshops are free to attend, provide networking opportunities and are delivered by industry experts.*

*Previous topics have included:*

- *Grass Pitch Improvements*
- *In-Season Maintenance*
- *Grass Pitch Maintenance Machinery*

*Future workshops will always be announced on the [West Riding FA Groundskeeping Community](#) so join now to make sure you don't miss out!*





# TRAINING AND WORKSHOPS

## Grounds Management Association (GMA) Training & Courses

The Grounds Management Association (GMA) have a range of training courses that are suitable for both the professional groundskeeper and grassroots volunteer.

### Level 1 Football Grounds Maintenance

The new online Level 1 modules allow you to gain an awareness and general understanding of the tasks involved in maintaining playing surfaces. The course costs £46.00 (including VAT) and can be accessed [here](#).

If your organisation is looking to access the Football Foundation's Grass Pitch Maintenance Fund and/or funding towards maintenance machinery, two members of the organisation will need to complete this course.

#### What does the course content cover?

Within this online course you will learn about the tasks involved in maintaining a playing surface in a cost-effective way. There are 3 modules to this training course, all are designed to either give you a new understanding or build on your experiences so far:

- Requirements of the groundsperson and pitch
- Maintenance activities (Equipment and Machinery)
- Safe use and storage (Materials)

#### What do you get for completing the course?

You will receive a certificate of completion which can compliment your own CPD activity.

### Other GMA Courses

A full list of GMA courses that may be of interest can be found [here](#).



### GMA Monthly Drop-In Sessions

Chris Hunter, Regional Pitch Advisor for the GMA, hosts a monthly 'Top-Tips and Q&A' drop-in session where he discusses all things PitchPower, provides seasonal advice and gives you the opportunity to ask questions relating to pitch maintenance. Details of these sessions can be found on the [West Riding FA Groundskeeping Community](#) so join now to make sure you don't miss out!





# WEST RIDING FA GROUNDSKEEPING COMMUNITY

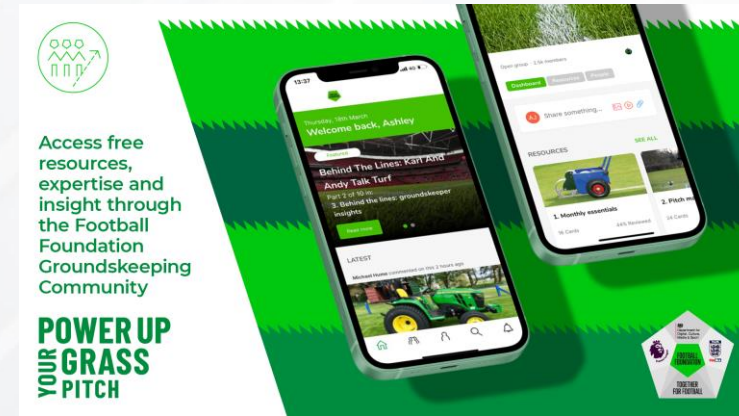
## JOIN THE WEST RIDING GROUNDSKEEPER COMMUNITY

*The West Riding FA Groundskeeping Community is an open group within the Football Foundation's Groundskeeping Community.*

*Open to those who have an interest in groundskeeping, or are involved in grass pitch maintenance at any level, such as grassroots football grounds staff/volunteers, professional groundskeepers or grassroots club officials.*

*This is a place to share best practice, seek support/advice and connect anytime, anywhere with other groundskeepers across different levels of the game, as well as accessing the latest best practice and advice from The FA, the GMA and the Football Foundation.*

Join [here](#) or by scanning the QR code.



# USEFUL CONTACTS

## Primary Contacts

### West Riding FA

If you are a football club affiliated to West Riding FA or another type of organisation within our region, our Facilities and Investment team are more than happy to discuss how we could help to improve your grass pitch(es). Contact us using the following details:

Andrew Shuttleworth (Facilities & Investment Manager)  
[Andrew.Shuttleworth@westridingfa.com](mailto:Andrew.Shuttleworth@westridingfa.com) / 0113 282 1222

Daniel Wiseman (Facilities & Investment Officer)  
[Daniel.Wiseman@westridingfa.com](mailto:Daniel.Wiseman@westridingfa.com) / 0113 282 1222

You may also find the answer to your question by speaking with those within the [West Riding FA Groundskeeping Community](#).

### Football Foundation

Should you wish to discuss a funding application you have submitted, if you have a question regarding an existing Football Foundation grant or if you have any funding specific queries that cannot be answered by West Riding FA please contact [enquiries@footballfoundation.org.uk](mailto:enquiries@footballfoundation.org.uk)

For PitchPower specific queries (e.g. technical issues with PitchPower) please contact [pitchpower@footballfoundation.org.uk](mailto:pitchpower@footballfoundation.org.uk)



### Grounds Management Association (GMA)

If you require technical pitch maintenance advice and/or have a question regarding your PitchPower report please contact:

Chris Hunter, Regional Pitch Advisor, North East (Football)  
[chunter@thegma.org.uk](mailto:chunter@thegma.org.uk) / 07841 338 221

Chris has 14 years' practical experience in sports turf and amenity grassland management. Prior to becoming a Regional Pitch Advisor, Chris spent three years as a tutor on the Level 2 and Level 3 Sports Turf Apprenticeships at Askham Bryan College. Chris is a qualified assessor and has conducted many practical and skills assessments from grassroots to elite-level surfaces. Chris was a Deputy Head Greenkeeper on a Golf Course, which expanded his understanding of managing different sports turf constructions. Chris holds a Level 3 Diploma in Sports Turf Management and a Foundation Degree in Sports Turf Management & Science. He is also trained in the safe use of pesticides having gained NPTC spraying qualifications PA1, PA2 and PA6.





# USEFUL CONTACTS

## Grass Pitch Maintenance Contractors

Please note: This is by no means a recommended, preferred or closed list – these are simply some organisations that have been used by clubs within West Riding FA. Please do your own extensive research.



### Garry Scott

Groundworks |  
Landscaping | Maintenance

Sports Pitch Specialists

GPS Robot Line Marking

Grass Cutting

Verti-Draining

Top Dressing

Weed Spraying

Scarifying

Fertilising

[www.gs-glm.co.uk](http://www.gs-glm.co.uk)

T: 01484 847696

M: 07899 984526



### RMP

RMP are able to provide a tailor-made service that suits your budget – whether that be a full annual maintenance agreement or just carrying out one off jobs on your behalf.

Mowing

Aeration

Rolling

Verti-draining

Scarification

Topdressing

Overseeding

Fertiliser application

Weed & worm control

Initial white line marking

White line over marking

Landscaping

[www.rmpgroundcare.com](http://www.rmpgroundcare.com)

T: 07810 560245



### Chappelow

Earthworks/Landforming  
Primary & Secondary Drainage

Sand Master

Sand Slitting

Top Draining

Fertilising

Grass Cutting

Scarifying

Spraying

Fibre Sand Installation

Ground Aeration

Sand Spreading

Seeding

Shockwaving

Pitch Construction

Stone Raking

Verti-Draining

[www.chappelowsportsturf.co.uk](http://www.chappelowsportsturf.co.uk)

T: 01924 493359



### Bancroft Amenities

Full surface refurbishment  
Koroing – surface stripping or  
fraise mowing  
Surface leveling/ laser grading

Verti draining

Earth quaking

Top dressing

Scarifiying

Overseeding

Mowing

Fertiliser and chemical  
applications

[www.bancroftamenities.co.uk](http://www.bancroftamenities.co.uk)

T: 0161 368 1869



### Sports Pitch Maintenance

Professional Groundsman... Providing a  
professional playing surface at your club!

Cricket | Football | Rugby | Bowls

Giving grassroots clubs the professional finish

[www.facebook.com/sportspitchmaintenance](http://www.facebook.com/sportspitchmaintenance)

[sportspitchmaintenance@hotmail.com](mailto:sportspitchmaintenance@hotmail.com)

T: 07969 363371

### HARDCASTLE AMENITY LTD

### Hardcastle Amenity Ltd

Hardcastle Amenity Ltd, a Yorkshire based,  
family business, run by two brothers Simon &  
Richard Hardcastle.

Sports Turf Renovation, Maintenance &  
Construction

Aerating

Topdressing

Seeding

Fertilising

Pesticide Application

Scarifying

Turfing

Construction

[www.hardcastleamenity.co.uk](http://www.hardcastleamenity.co.uk)

T: 01977 607 680



**ENGLAND  
FOOTBALL**

# USEFUL CONTACTS

## Maintenance Machinery Suppliers

*Please note: This is by no means a recommended, preferred or closed list – these are simply some organisations that have been used by clubs within West Riding FA. Please do your own extensive research.*

**BALMERS**  
TURF CARE MACHINERY SPECIALISTS **GM**

### Balmers GM

*Trading for over 40 years, Balmers GM have grown to become one of the largest dedicated turf machinery dealers in the UK.*

*Balmers GM stock a comprehensive range of turf and groundcare machinery, as well as the latest lawn and garden equipment by the industry's leading manufacturer's; John Deere, Stihl, Husqvarna, Hayter and more.*

[www.balmersgm.com](http://www.balmersgm.com)

T: 01924 679400

**ggm**  
at the ready

### GGM

*GGM Groundscare are a specialist supplier of tractors, high quality professional groundscare machinery and after-sales support, dedicated to meeting the long-term requirements of our customers.*

*Our long-standing partnership with Kubota extends over 40 years, during which time we have established ourselves as a leading Groundscare Machinery provider throughout the North-West of England and Yorkshire. Driven by a set of deep-rooted values, all staff at GGM take pride in building and nurturing customer relationships based on anticipating needs, problem solving and delivering on time, every time.*

[www.ggmgroundscare.com](http://www.ggmgroundscare.com)

T: 01282 969010

**RUSSELLS**

### Russells

*The team at Russell Groundcare have been working together for many years and offer you the best possible group of world class fine turf and grounds maintenance products. Servicing the whole of Yorkshire from dedicated premises in Gilberdyke (near Hull) and Rotherham, we provide the most comprehensive groundcare equipment sales, hire, parts and service offering in the region.*

*The Russell Groundcare team offer friendly advice to assist with all your fine turf and commercial groundcare needs.*

<https://russells.uk.com>

T: 01430 444700



**ENGLAND  
FOOTBALL**



# USEFUL CONTACTS

## Grass Pitch Maintenance Materials: Agrigem (West Riding FA Partner)

West Riding FA has an ongoing partnership agreement with [Agrigem](#), which will enable our affiliated clubs to access special prices on a wide range of grass pitch related products.

Agrigem are a fast-growing company who supply materials such as fertilisers, grass seed, selective weed control, top dressing and line marking paint to sports clubs and contractors.

Whether you are creating a brand-new pitch, improving your current playing surface or trying to increase the number of games you are able to play each week, their unique understanding of both professional and grassroots pitches will ensure all affiliated clubs will receive fantastic service and support in developing your pitches.

**IN ADDITION TO THE HIGHEST LEVEL OF CUSTOMER SERVICE, ALL WEST RIDING FA AFFILIATED CLUBS WILL RECEIVE A DISCOUNT ON ALL PRODUCTS OF 10% OFF RRP**

To take advantage of this offer or discuss how Agrigem can support the development of your grass pitches, please contact Martin Ford at [martin.ford@agrigen.co.uk](mailto:martin.ford@agrigen.co.uk)

[www.agrigen.co.uk](http://www.agrigen.co.uk)  
[www.sportspitch.shop](http://www.sportspitch.shop)



## Pitch Inspection Equipment: BMS Products



Should you wish to purchase a soil sampler and mallet you can access a discount on these products via [BMS Products](#).

### Impact Soil Sampler

<https://www.bmsproducts.com/shop/turf-care-hand-tools/soil-samplers/impact-soil-sampler/>

### Deadblow mallet

<https://www.bmsproducts.com/shop/turf-care-hand-tools/general-purpose-rakes-tools/blue-strike-deadblow-mallet/>

To access the discount, you will need to enter a promo code **FF2021** at checkout.