



**SHEFFIELD & HALLAMSHIRE  
COUNTY FA  
WOMENS COUNTY CUP**



**2022**

**Date** – Saturday 30<sup>th</sup> April

**Location** – Eco-Power Stadium, Doncaster

**Kick-off** – 10.30am



**Barnsley  
Women's FC**

**VS**



**Huddersfield Town  
Women FC**

# ***RUNNING ORDER AND GAMES***

**9.45am – 10.15am**

**Warmups**

**10.20am**

**Walkouts**

**10.30am**

**Kick-off (45 minute half)**

**10.45am**

**Half-time**

**11.00am**

**Second half kick-off (45 minute half)**

**11.45am**

**Full-time**

**11.50am**

**Team Awards / Trophy Presentation / Photos**

# ***MATCH RULES***

The duration of play will be 45 minutes per half. If the scores are equal after full time, extra time of 15 minutes per half will be played. If the scores are still level after extra time, then the tie shall be decided by penalties in accordance with F.I.F.A. Rules to decide the winner.



# INTRODUCTION



**Mike Drummond**

*Competitions Officer*

[Mike.Drummond@sheffieldfa.com](mailto:Mike.Drummond@sheffieldfa.com)

On behalf of everybody at the Sheffield & Hallamshire County FA, may I welcome you all to Doncaster Rovers FC's Eco-Power Stadium for the final of the Sheffield and Hallamshire County FA Women's County Cup.

May I also extend a warm welcome to the players, club officials, match officials and volunteers of both teams. Days like today make it all worthwhile and we hope it's a memorable occasion for all.

The last couple of seasons have been a real challenge for everyone, not only in football terms, so it's with a great sense of relief and pride that we are able to complete our cup competitions in a 'normal' way.

I would like to put on record our thanks to all clubs for their co-operation with our county cup competitions.

As a County FA, we are well aware of how important county cups are to everyone involved in grassroots football across our region, and we are working tirelessly behind the scenes to constantly improve our prestigious cup competitions.

Thank you to Doncaster Rovers FC for providing us with a fitting venue to host our county cup finals.

Finally, thank you for your support today. I hope you enjoy the game and will observe The FA Respect campaign.



# MATCH PREVIEW

Barnsley Women renew their friendly rivalry with neighbours Huddersfield Town Women in the Sheffield & Hallamshire Women's County Cup final today, meeting again to contest a fifth consecutive County Cup final.

The Terriers are looking to avenge their 2019 penalty heartbreak after losing 4-2 on penalties to the Reds, despite fighting back from two goals down and scoring a last-minute equaliser.

Town Women lifted this trophy in 2017 and 2018, and are hoping to add a third County Cup final win to their honours

Huddersfield Town Women's first team had to overcome their own development side to reach this year's final, winning 5-1 against their counterparts in the semi-finals. Barnsley Women, the current holders of the competition, also have their sights set on a third County Cup final success.

The Reds beat Oughtibridge WM Women 4-0 in the semi-finals to book their place in this year's final.

The occasion will provide spectators with a taste of what's to come for women's football in our region, with both Sheffield and Rotherham hosting UEFA Women's Euro 2022 group matches and crucial knock-out games this summer.



*meet*

# BARNSELY WOMEN'S FC



**Year Formed:** 1982

**League:** FA Women's National League Division One North

**Cup final kit colours:**  
Red shirt, white shorts and red socks.

## CLUB HISTORY

Barnsley Women's Football Club was formed in 1982, under the name 'Barnsley Ladies FC'. The club used the name 'Barnsley Ladies FC' for 34 years until the end of the 2016/17 Season, when it changed its name to 'Barnsley FC Ladies' for the following two seasons until the end of 2018/19. On 16 March 2018, Barnsley Women's Football Club Limited took over the club and changed its name to 'Barnsley Women's Football Club'. Barnsley Women's Football Club currently plays in the FA Women's National League Division One North. We are the current holders of The County Cup.

## MANAGER *ANDREW GLOSSOP AND LOIS DANIELS*

We look forward to renewing our rivalry with our close friends and neighbours Huddersfield Town.

# SQUAD LIST:

Serena Clarke - Goalkeeper

Sheldon Ashton - Midfield

Natalie Watson - Midfield

Eve Bayliss - Defender

Jodie Michalska- Attack

Madison Foye - Defender

Becky Gompertz - Defender

Natalie Shaw- Attack

Ruby Jex-Oldfield - Midfield

Eve Marshall - Defender

Taviah Myles - Defender

Niamh Ryalls - Defender

Emily Pierrepont- Attack

Rosy Wodhams - Defender

Rebekah Coe - Attack

Ellie Millar- Defence

Courteney Csomor - Midfielder





**meet**

# HUDDERSFIELD TOWN WOMEN FC



**Year Formed:** 1988

**League:**  
FA Women's National League  
(North)

**Cup final kit colours:**

Shirts: Blue and white vertical  
stripes. Shorts: White.  
Socks: Black



## CLUB HISTORY

1988: Huddersfield Ladies FC joined North-East Regional League Division Two, won league Cup, promoted as champions.

1993: Merged with Huddersfield Town Juniors becoming Huddersfield Town Ladies FC.

1993-1995: Twice league champions, league & Yorkshire cup winners.

1995-2009: Relegated to Yorkshire & Humberside Premier League, junior setup development.

2010/11: NERWPL league & cup double, promoted to Northern Women's Combination league.

2013/14 League champions, promoted to FAWPL Northern Division.

2016/17, 2017-18 County Cup Winners.

2019: Name changed to Huddersfield Town Women FC.

2019-2022: Twice reached FA Cup 5<sup>th</sup> round, topped 2020/21 league until curtailed by lockdown.

2022: League & County cup finalists.

## MANAGER GLEN PRESTON

A warm welcome to the Eco-Power Stadium for what promises to be an exciting Sheffield & Hallamshire Women's County Cup Final against this strong Barnsley Women's FC team.

I'm delighted to lead out my Huddersfield Town Women team to compete for silverware as this competition returns after a couple of lockdown-hit seasons.

A huge thank you to my coaching team, backroom staff and especially the players who give up so much of their time to make this happen. Thank you especially to the fans here today supporting both teams; it really does make the difference.  
Enjoy the game, UTT!



# SQUAD LIST:

## **Beth Stanfield**

A tidy technical player who features on the right, calm under pressure, a strong tackler with the ability to pick out a pass.

## **Beth Ibbotson**

A smooth passer who can play anywhere along our back line. A key player in defence with an excellent touch that turns defence into counterattack.

## **Katie Mallin**

A dynamic wide midfielder player who can operate on either wing. Has surpassed 500 appearances for Town; recently inducted into the HTSA Hall of Fame.

## **Vicky Abbott**

A strong defender and great reader of the game who dominates in her battles and can be relied upon for key clearances.

## **Lauren Griffiths**

A key midfield anchor, with smooth technical ability and an eye for a pass. Reliable and consistent, featuring in most games this season.

## **Katie Stanley (C) Née Nutter**

An attacking midfielder with great close control and the creativity to create chances; a calm, motivating presence on the pitch.

## **Ria Montgomery**

A talented and speedy winger with an eye for goal. Secured the Goal of the Month award three times in her first fourth months!

## **Laura Elford**

A dynamic, physical striker who poses a danger to any defence. Strong in the air with a turn of pace and regularly on the scoresheet.

## **Brittany Sanderson**

A creative and hardworking attacking midfielder with a desire for goalscoring. Particularly dangerous when given the opportunity to take long-range freekicks.

## **Autumn Housley**

A skilful centre half with plenty of talent. In her first season with the club, and already becoming a regular in the starting eleven.

## **Yasmin Mason**

A recent addition to the squad from Sheffield FC. A pacey and creative attacking player with a strong desire to get on the scoresheet.

## **Georgia Marshall**

A solid, defensively minded centre back. Back-up clubcaptain to Katie Stanley, with a good eye for strong defensive tackles.

## **Zoe Laughton**

A right sided player with a tremendous work rate, tough in her battles. Has progressed from the development team this season.

## **Paige Crossman**

A quick and talented defender, but with a desire and ability to break forwards, scoring four goals in one game earlier this this season.

## **Lois Scholefield**

A left-sided player who is both defensively strong and has the ability to create attacks.

## **Serena Fletcher**

A dynamic attacking player who creates scoring opportunities and stops opposition attacks. Has the ability to catch defenders offguard with an early shot from distance.

## **Daniela Kosinska**

Polish goalkeeper recently arriving from fellow Tier 3 side Loughborough Lightning. Has a wealth of experience with Stoke City and Aston Villa Women among others.

## **Bethan Davies**

The complete goalkeeping package with quick feet, fantastic handling and great distribution. A commanding presence at the back, often the loudest voice on the pitch!

## **Falone Sumaili**

A Burundi international striker; always calm on the ball and full of technical trickery, blistering pace and always dangerous in front of goal.

## **Mia Parry**

An attacking midfielder with an enviable first touch and strong tackle. Creates attacking pressure with great composure on the ball and quick combination play.

06 → 31  
JULY  
2022



# TICKETS ON SALE NOW

BUY NOW  
[UEFA.COM/  
WOMENSEURO](https://uefa.com/womenseuro)







# ROTHER HAM

NEW YORK STADIUM

# SHEFF FIELD

BRAMALL LANE

SUNDAY 10 JULY, 8PM | GROUP STAGE

FRANCE  -  ITALY

THURSDAY 14 JULY, 8PM | GROUP STAGE

FRANCE  -  BELGIUM

MONDAY 18 JULY, 8PM | GROUP STAGE

ICELAND  -  FRANCE

SATURDAY 23 JULY, 8PM | QUARTER-FINAL

WINNER D  -  RUNNER-UP C

SATURDAY 9 JULY, 8PM | GROUP STAGE

NETHERLANDS  -  SWEDEN

WEDNESDAY 13 JULY, 5PM | GROUP STAGE

SWEDEN  -  SWITZERLAND

SUNDAY 17 JULY, 5PM | GROUP STAGE

SWITZERLAND  -  NETHERLANDS

TUESDAY 26 JULY, 8PM | SEMI-FINAL

WINNER QF1  -  WINNER QF3



**BUY TICKETS NOW**  
**UEFA.COM/WOMENSEURO**



## **INSPIRED TO GET INVOLVED IN FOOTBALL?**

Sheffield and Hallamshire County FA can help you get into football – from a social kickabout to playing competitively – as well as providing routes into coaching, refereeing and volunteering.

[www.sheffieldfa.com](http://www.sheffieldfa.com)



@sheffieldCFA



@SHCFA



@SheffieldCFA



@SheffieldFA



## Play

Whether it's been months or years since you last played, or you've never kicked a ball in your life, football doesn't just mean your typical eleven-a-side competitive matches. From a relaxed kickabout to competitive matches - and everything in between - there's a format of the game to suit everybody.



## Coach

Motivate, inspire and develop others by becoming a coach. All you need to become a coach is a passion for football and the willingness to devote your time to helping others. Our dedicated team of tutors, mentors and support staff are here to help you achieve your coaching goals.



## Referee

Without a referee, there is no game! Referees are in high demand across our county and you'd be playing a crucial role in ensuring players enjoy their match day experience. There are local referee courses running throughout the year.



## Volunteer

There are thousands of established grassroots community clubs that are crying out for volunteers. Whether you're starting your coaching journey, a student looking to develop some key skills, want to give something back to the game or have some extra time to fill, there's an opportunity for you.



SCAN ME

## Start Your Search

Find the type of football that suits you, or somebody you know, by visiting our website [www.sheffieldfa.com](http://www.sheffieldfa.com) or by emailing us at [support@sheffieldfa.com](mailto:support@sheffieldfa.com)

# **//WHARTON IMAGES**

Sports and Event Photographer

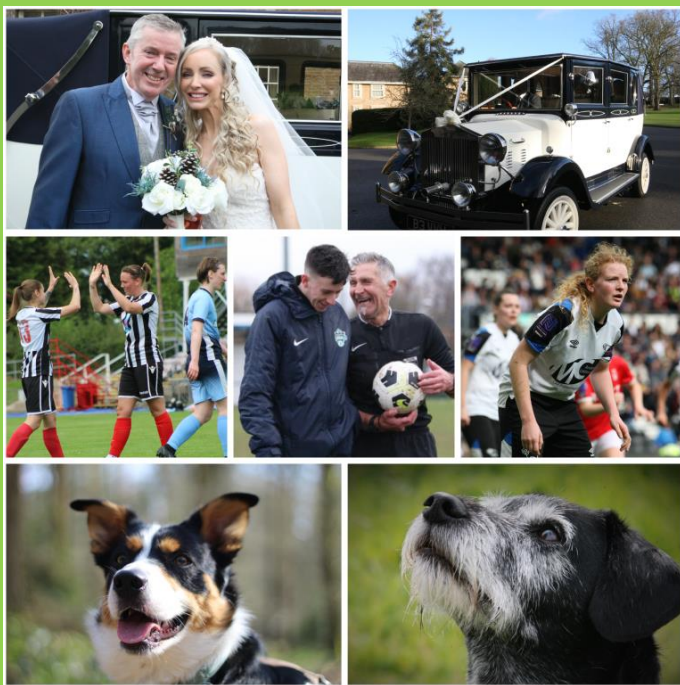
Available for sporting events, weddings, pet photography etc.  
Please contact me for a no obligation quote. I offer fixed price packages, but these can be tailored to suit the individual needs.

You can check out more of my work on:

Facebook @chriswhartonimages

Instagram @chris\_wharton\_images

Please contact me if you have any queries on 07482235885 or  
send me a message on social media.





# Sports club insurance

To make sure you are appropriately covered, our club insurance policy can be built around your particular needs.

**0345 872 5060**

**sport@bluefinsport.co.uk**  
**bluefinsport.co.uk/myclub**

This is a marketing communication. Bluefin Sport is a trading name of Marsh Ltd. Marsh Ltd is authorised and regulated by the Financial Conduct Authority for General Insurance Distribution and Credit Broking (Firm Reference No.307511). Registered in England and Wales Number: 1507274. Copyright 2022. 22-838862151



**SHEFFIELD & HALLAMSHIRE  
COUNTY FA  
WOMENS COUNTY CUP**



**BARNSELY  
WOMEN'S FC**

**Manager:** Andrew Glossop and Lois Daniels  
**Colours:** Red shirt, white shorts and red socks.

Serena Clarke	
Sheldon Ashton	
Natalie Watson	
Eve Bayliss	
Jodie Michalska	
Madison Foye	
Becky Gompertz	
Natalie Shaw	
Ruby Jex-Oldfield	
Eve Marshall	
Taviah Myles	
Niamh Ryalls	
Emily Pierrepont	
Rosy Wodhams	
Rebekah Coe	
Ellie Millar	
Courteney Csomor	



**HUDDERSFIELD  
TOWN WOMEN FC**

**Manager:** Glen Preston  
**Colours:** Shirts: Blue and white vertical stripes.  
Shorts: White. Socks: Black

Beth Stanfield	
Beth Ibbotson	
Katie Mallin	
Vicky Abbott	
Lauren Griffiths	
Katie Stanley	
Ria Montgomery	
Laura Elford	
Brittany Sanderson	
Autumn Housley	
Yasmin Mason	
Georgia Marshall	
Zoe Laughton	
Paige Crossman	
Lois Scholefield	
Serena Fletcher	
Daniela Kosinska	
Bethan Davies	
Falone Sumaili	
Mia Parry	

**WOMEN'S COUNTY CUP FINAL  
MATCH OFFICIALS**

**Referee:** Stacey Hall  
**Assistant Referee:** Megan Wilson  
**Assistant Referee:** Aaron Hallam  
**Fourth Official:** Richard Trinder