



**SHEFFIELD & HALLAMSHIRE  
COUNTY FA**  
7v7 DISABILITY CUP



**2022**

**Date** – Sunday 24<sup>th</sup> April

**Location** – Eco-Power Stadium, Doncaster

**Kick-off** – 10.40am



**VS**



**Bradford City FITC  
Disability Amber**

**Sheffield FC Adult  
Disability Reds**

# ***RUNNING ORDER AND GAMES***

**10.10 – 10.30am**

**Warm ups**

**10.40am**

**Kick-off (15 minute half)**

**10.55am**

**Half-time**

**11.00am**

**Second half kick-off (15 minute half)**

**11.15am**

**Full-time**

**11.15am**

**Team Awards / Trophy Presentation / Photos**

# MATCH RULES

The duration of play for the 7v7 Disability Cup Final will be 15 minutes per half.

If the scores are still level after full-time, then the tie shall be decided by penalties in accordance with F.I.F.A. Rules to decide the winner.



# INTRODUCTION



## Mike Drummond

*Competitions Officer*

[Mike.Drummond@sheffieldfa.com](mailto:Mike.Drummond@sheffieldfa.com)

On behalf of everybody at the Sheffield & Hallamshire County FA, may I welcome you all to Doncaster Rovers FC's Eco-Power Stadium for our 2021/22 county cup finals.

May I also extend a warm welcome to the players, club officials, match officials and volunteers of both teams. Days like today make it all worthwhile and we hope it's a memorable occasion for all.

The last couple of seasons have been a real challenge for everyone, not only in football terms, so it's with a great sense of relief and pride that we are able to complete our cup competitions in a 'normal' way.

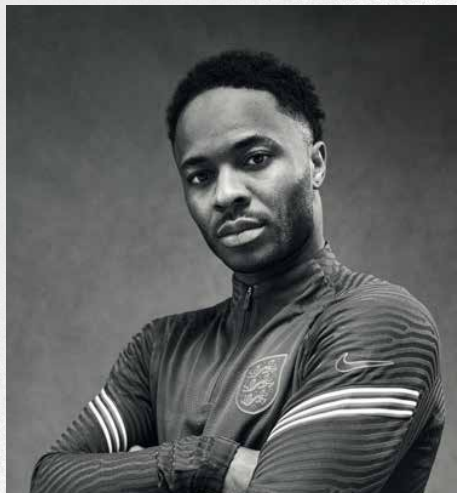
I would like to put on record our thanks to all clubs for their co-operation with our county cup competitions.

As a County FA, we are well aware of how important county cups are to everyone involved in grassroots football across our region, and we are working tirelessly behind the scenes to constantly improve our prestigious cup competitions.

Thank you to Doncaster Rovers FC for providing us with a fitting venue to host our county cup finals.

Finally, thank you for your support today. I hope you enjoy the game and will observe The FA Respect campaign.





**SHOW SOME**

**RESPECT**

**#SHOW SOME RESPECT**



**RESPECT**



Building society with mutual respect

*meet*

# BRADFORD CITY FITC DISABILITY AMBER



**Year Formed:** 2017

**League:** South Yorkshire Ability Counts league

**Cup final kit colours:**

Claret/Amber Shirts Black Shorts Black Socks

## **CLUB HISTORY**

Bradford City DFC was formed in August 2017 and joined the South Yorkshire Ability Counts league in November 2017.

They have seven adult teams and four junior teams.

The club have been very successful in South Yorkshire over the last five years, winning all the various league titles at some stage with various teams! The club is growing all the time and has over 100 members ranging from 5 to 63 years old.

## **MANAGER *STEFAN DUBEJ***

After a hard season for our Amber team, blighted by injuries and covid, we are pleased to have reached the final of the Sheffield & Hallamshire 7v7 Disability Cup. It won't be an easy game against the 7 aside Premier League Champions, Sheffield FC Reds, but we will give it our best shot and hopefully prevail.



# SQUAD LIST:

## **John Bigmore**

Has been with the club since it was formed and has been the top goalkeeper for the last 5 years.

## **Henry Waudby**

Henry moved up from the under-16s team a couple of years ago. He is now a regular for the Ambers.

## **James Williams**

James is a no-nonsense defender, who has played for the club since it was formed. He's the veteran of the team.

## **McKenzie Finbow**

McKenzie has also moved up from our Under 16s team. Although he started as a goalkeeper, he now plays in midfield.

## **George Dubej**

Another under-16s player who moved up to the Ambers, George's goals have been vital in getting the Ambers to this final.

## **Jordan Pounder**

Jordan also moved up from the Under-16s to play for the Ambers, a tricky winger who can score goals on his day!

## **Edward Ratcliffe**

Eddie has moved up from the Clarets team, he also plays on the wing and can score important goals for the team too.

## **Stuart Thirkhill**

Stuart can play in defence or midfield, another player who has moved up from the Clarets team to help out the Ambers this season.



*meet*

# SHEFFIELD FC ADULT DISABILITY REDS



**Year Formed:** 2015

**League:** South Yorkshire Ability Counts - 7 a side

**Cup final kit colours:**

Red tops, Black shorts and black socks

## **CLUB HISTORY**

Sheffield FC Disability was formed in 2015. We started out with a small number of children seven years ago and have grown organically to over 60 juniors and adults.

Our players have a range of conditions but they all thoroughly enjoy playing football, and we love supporting them develop as players and as people. As an all-inclusive football club, our aim is to further develop and enable more children and adults with special needs to play football.

We feel a large proportion of our registered players have benefitted from playing regular football - physically, mentally and socially.

## **MANAGER PETER DUXBURY**

We are over the moon to have reached the 7v7 Disability Cup Final. We have changed the squad around from last season and it naturally took time for the players to play well together. We have had a great season by winning the league and divisional cup and are looking to secure an unprecedented treble for the Sheffield FC Disability Adults. It won't be easy playing a Bradford side that pushed us hard the last time we played, and with any cup final I am hoping for that bit of luck you sometimes need to win the game.



# SQUAD LIST:

## **Matthias Johnson**

Goalkeeper – impressive season and has kept many clean sheets throughout the season. Organises the back line well.

## **Jason Willis**

Defender – a reliable player who reads the game well and makes key tackles. Shows composure when the team have been under pressure.

## **Archie Brook**

Defender – has settled into the team quickly performing strongly at the back. Dominates and commands the defensive areas.

## **Kyle Reid**

Defender – another player that has quickly integrated into the team. A passionate player with plenty of energy and crunching tackles.

## **Liam Hallatt**

Midfielder and captain – an experienced leader on and off the pitch. Passes the ball with accuracy and sets up our forward play.

## **Paul Crossley**

Midfielder – great addition to the team. He brings a calmness to the team and works hard to link up with our forward players.

## **Taighler Bennett Jones**

Winger – plays with style, pace and skill. Creates chances and is a dangerous threat to any team we have faced.

## **Jordan Jackson**

Winger – has added lots of pace to the team. Has got good balance and has scored great goals from distance.

## **George Allison**

Attacker – an outstanding season scoring lots of goals. A strong player whose tirelessness works for the whole team.



06 → 31  
JULY  
2022



# TICKETS ON SALE NOW

BUY NOW  
[UEFA.COM/  
WOMENSEURO](https://uefa.com/womenseuro)





# ROTHER HAM

NEW YORK STADIUM

# SHEFF FIELD

BRAMALL LANE

SUNDAY 10 JULY, 8PM | GROUP STAGE

FRANCE  -  ITALY

THURSDAY 14 JULY, 8PM | GROUP STAGE

FRANCE  -  BELGIUM

MONDAY 18 JULY, 8PM | GROUP STAGE

ICELAND  -  FRANCE

SATURDAY 23 JULY, 8PM | QUARTER-FINAL

WINNER D  -  RUNNER-UP C

SATURDAY 9 JULY, 8PM | GROUP STAGE

NETHERLANDS  -  SWEDEN

WEDNESDAY 13 JULY, 5PM | GROUP STAGE

SWEDEN  -  SWITZERLAND

SUNDAY 17 JULY, 5PM | GROUP STAGE

SWITZERLAND  -  NETHERLANDS

TUESDAY 26 JULY, 8PM | SEMI-FINAL

WINNER QF1  -  WINNER QF3



**BUY TICKETS NOW**  
**UEFA.COM/WOMENSEURO**





## INSPIRED TO GET INVOLVED IN FOOTBALL?

Sheffield and Hallamshire County FA can help you get into football – from a social kickabout to playing competitively – as well as providing routes into coaching, refereeing and volunteering.

[www.sheffieldfa.com](http://www.sheffieldfa.com)







## Play

Whether it's been months or years since you last played, or you've never kicked a ball in your life, football doesn't just mean your typical eleven-a-side competitive matches. From a relaxed kickabout to competitive matches - and everything in between - there's a format of the game to suit everybody.



## Coach

Motivate, inspire and develop others by becoming a coach. All you need to become a coach is a passion for football and the willingness to devote your time to helping others. Our dedicated team of tutors, mentors and support staff are here to help you achieve your coaching goals.



## Referee

Without a referee, there is no game! Referees are in high demand across our county and you'd be playing a crucial role in ensuring players enjoy their match day experience. There are local referee courses running throughout the year.



## Volunteer

There are thousands of established grassroots community clubs that are crying out for volunteers. Whether you're starting your coaching journey, a student looking to develop some key skills, want to give something back to the game or have some extra time to fill, there's an opportunity for you.



SCAN ME

## Start Your Search

Find the type of football that suits you, or somebody you know, by visiting our website [www.sheffieldfa.com](http://www.sheffieldfa.com) or by emailing us at [support@sheffieldfa.com](mailto:support@sheffieldfa.com)

# //WHARTON IMAGES

Sports and Event Photographer

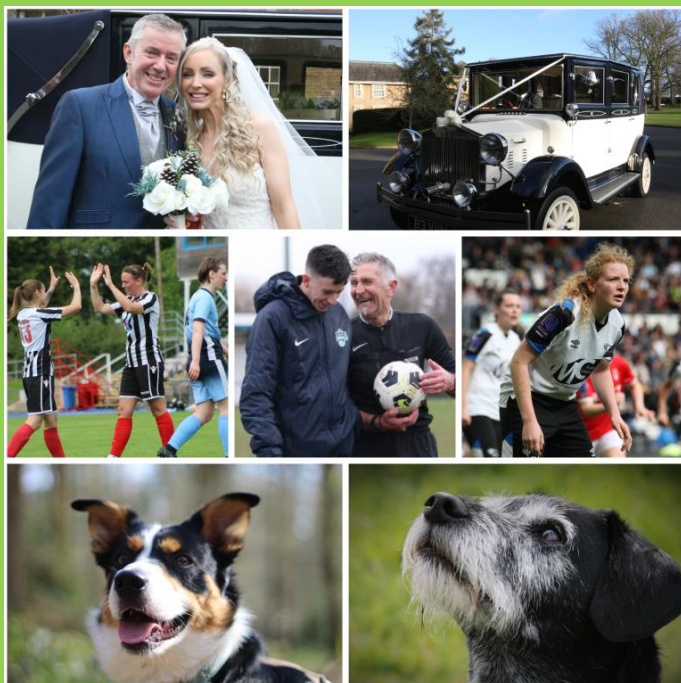
Available for sporting events, weddings, pet photography etc.  
Please contact me for a no obligation quote. I offer fixed price packages, but these can be tailored to suit the individual needs.

You can check out more of my work on:

Facebook @chriswhartonimages

Instagram @chris\_wharton\_images

Please contact me if you have any queries on 07482235885 or  
send me a message on social media.





**Marsh** | **BluefinSport**

# Sports club insurance

To make sure you are appropriately covered,  
our club insurance policy can be built around  
your particular needs.

**0345 872 5060**

**sport@bluefinsport.co.uk**  
**bluefinsport.co.uk/myclub**

This is a marketing communication. Bluefin Sport is a trading name of Marsh Ltd. Marsh Ltd is authorised and regulated by the Financial Conduct Authority for General Insurance Distribution and Credit Broking (Firm Reference No.307511). Registered in England and Wales Number: 1507274. Copyright 2022. 22-838862151



**SHEFFIELD & HALLAMSHIRE  
COUNTY FA**  
7v7 DISABILITY CUP



**BRADFORD CITY FITC  
DISABILITY AMBER**

**Manager:** Stefan Dubej  
**Colours:** Claret/Amber Shirts Black Shorts  
Black Socks

John Bigmore	
Henry Waudby	
James Williams	
McKenzie Finbow	
George Dubej	
Jordan Pounder	
Edward Ratcliffe	
Stuart Thirkhill	

**SHEFFIELD FC ADULT  
DISABILITY REDS**

**Manager:** Peter Duxbury  
**Colours:** Red tops, Black shorts and black socks

Matthias Johnson	
Jason Willis	
Archie Brook	
Kyle Reid	
Liam Hallatt	
Paul Crossley	
Taighler Bennett Jones	
Jordan Jackson	
George Allison	

**SUNDAY SENIOR FINAL MATCH OFFICIALS**

Referee: Sean Wright