



The Norfolk FA Superhero League

Committee

Gabby Evbota (Chair)

Gabriel (Gabby) is the Chair of the Norfolk FA Inclusion Strategy and Advisory Group (ISAG); an Associate Non-Executive Director sitting on the board of Queen Elizabeth Hospital, Kings Lynn and a founding member of the Black Staff and Allies Workstream within HM Treasury. He is an ex-player/manager of various clubs in the Anglian Combination, Norfolk Sunday League and Norfolk Veterans Leagues. Currently, Gabby is manager of the FC Vikings' Sunday First (male) team.



Anoushka Williamson (Vice-Chair)

Anoushka works as the Disability Football Delivery Officer at Norfolk FA, co-ordinating disability football across Norfolk. Outside of this she has been the Inclusion Lead on the Norfolk FA Youth Council for the past 2 1/2 years. This season she has been selected as the EDI Lead on The FA National Youth Council, helping to ensure everything done at The FA National Youth Council is inclusive. She also coaches 1-2-1 disability football sessions.



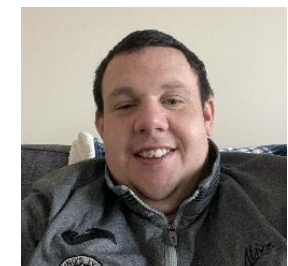
Tayla Woodhouse (Secretary)

Tayla is a previous employee at Norfolk FA, and during this time she supported with the set-up of this league. She is now a fulltime student at UEA, as well as a coach and player at the weekends. Tayla has a strong passion for disability football and loves to keep actively involved now as a volunteer.



Matthew Green (Treasurer)

Matthew is from Kings Lynn and supports Kings Lynn Town Football Club and Coventry City Football Club. He is coach at Alive Kings Lynn in the pan-disability set up and has a passion for ensuring that football is accessible to all. Matthew has a disability which is a learning difficulty.



Jake Brown (Welfare Officer)

Jake works at The FDC providing competitive small-sided league opportunities for males and females across Norfolk. Jake is keen to work in all formats of football and supports disability football as the Welfare Officer of the League Committee. Jake is also an active referee each weekend and loves to stay involved in as much football as he can.



Tina Gilder (Club Relations Officer)

Tina is a mum to three children all with SEN needs. She is also a football coach, disability officer and welfare officer at Hopton Harriers Football Club. Tina is very passionate in believing that all children should be given the opportunity to take part in the beautiful game, and is an advocate for supporting families on and off the pitch.



Jacki Fossett (Club Relations Officer)

Jacki is one of the disability officers at Hopton Harriers and has been an integral part of setting up and helping to run comet sessions at the club. She has a real passion to ensure that football is for everyone.



Chris Brown (Fixtures Secretary)

Chris is the current Chairman of Horsford F.C. and has been since 2017. He is also the Vice Chair for the Norfolk Combined Youth Football League. In this role he primarily schedules the fixtures for U9 through to U18, and he will also be supporting with this within the Superhero League.



Maggie Read (Communications Officer)

Maggie is a passionate sports development student at UEA, working with Norwich City Community Sports Foundation as a community coach in their disability provisions. She is keen to make a positive difference in sport! Maggie will be our communications officer supporting with our online and social media presence.



Graeme Davies (NCFA Disability Ambassador)

Graeme volunteers for Norwich City Community Sports Foundation as a coach in the disability set up, which he has done for over 10 years. Graeme is an excellent coach who has been taking his expertise to his role at the Norfolk FA, where he helps mentor coaches of new disability sessions and supports clubs embarking on this adventure.

**Robert Fosset (General Member)**

Robert is the Chairman at Hopton Harriers Football Club. He also coaches their comets and disability sessions with passion, as well as coaching their little penguins and U8 sessions. Their club ethos is from Rob's own belief that football should be available for everyone.

