



LONDON FA NON-EXECUTIVE INDEPENDENT FINANCE & RISK BOARD DIRECTOR APPLICATION PACK



WE ARE ON A MISSION TO HARNESS THE POWER OF GRASSROOTS FOOTBALL TO ENRICH LIVES

INTRODUCTION

Thank you very much for your interest in applying for a role as an Independent Non-Executive Finance & Risk Director at the London FA. Our Board were recruited in January 2021 and a vacancy amongst our Independent Board Directors has arisen. The term would be for 18 months initially (up to January 2024), with the possibility of additional terms up to a maximum of three terms of three years

At London FA we are passionate about grassroots football and the role that it plays in bringing together people and communities for the benefit of all.

Our mission is to govern, safeguard and develop the grassroots game to ensure the best and most welcoming football experiences for all across the capital.

You can download a copy of our exciting strategy at the link below:

www.londonfa.com/about/london-fa-strategy-2020-2025

Whether you're a lifelong football enthusiast, player, volunteer, coach or a corporate professional looking to volunteer your expertise, we are committed to creating a Board of diverse skills, experience and backgrounds that can add value to the game.

We are running an open recruitment process to attract and recruit the best people for the roles. In this pack, you will find details of the skills and experience we are looking for, the values we live by and the process for applying.

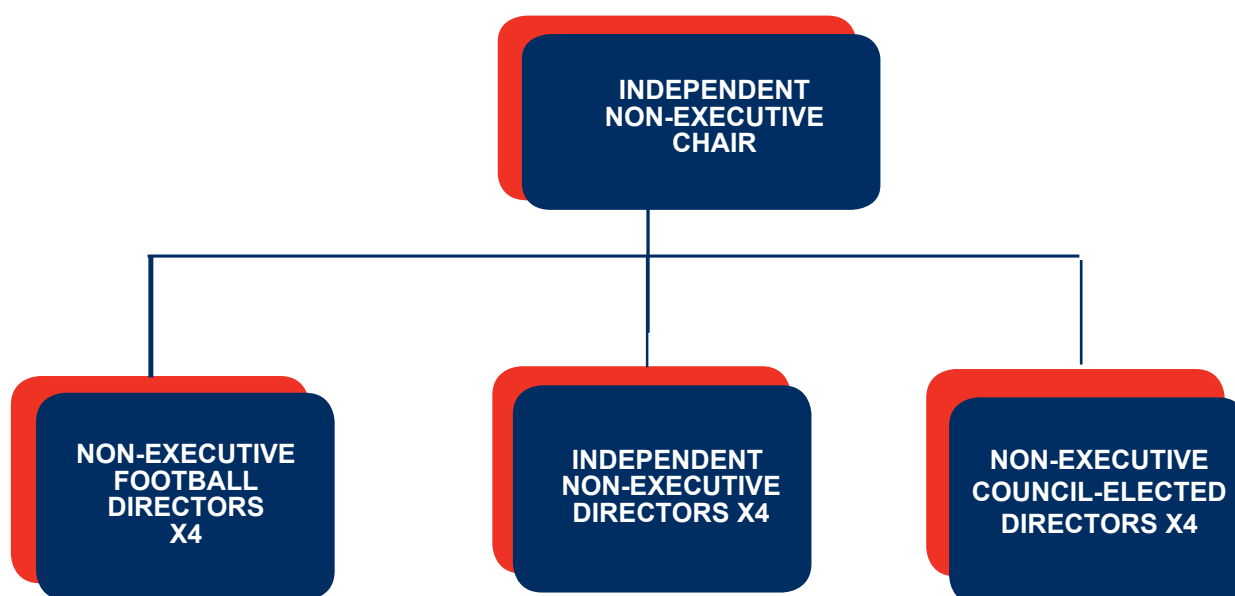
If you have any questions, please contact Paul.Bickerton@londonfa.com, our CEO. I am looking forward to reading your application.

James Middlehurst
London FA Chair



OUR BOARD STRUCTURE

The Non-Executive Board of Directors will ensure the London Football Association (LFA) is effectively and efficiently run, with appropriate oversight and governance, in line with the Sport England Code for Sports Governance and FA Code of Governance for County FAs. With representation from experts in football (which includes our Council-elected Directors), finance and corporate professionals, diversity of thought and experience will add value to our strategy, plans and delivery.



BOARD ROLE OVERVIEW

LFA Board Role Overview	Act as leaders to promote, foster, develop and support grassroots football in London
	Create and evaluate the LFA's strategic direction , objectives, mission, plans & values
	Make sure that the financial resources & people are in place for the LFA to meet its objectives
	Provide effective controls which enable risks to be understood, assessed and managed
	Provide monitoring and evaluation of success through effective performance management
	Ensure that its obligations to its Association Members and others are understood and met

COMMITMENT

The term of appointment is up to 1st January 2024 initially. Existing directors may seek reappointment and there is a limit of three terms of three years. Non-executive Board Directors will be expected to commit to a minimum of 8 hours each month. This time includes attending quarterly Board and London FA Council meetings. All Board Directors are required to attend induction training and regular safeguarding training.

APPLICATION PROCESS

We know that applying for roles can be time consuming, so we've made our application process as simple as possible. All we need from you at this stage is two things:

- A cover letter explaining why you wish to apply and why you think you are suitable
- A copy of your CV



AVAILABLE ROLES & FURTHER INFORMATION

There is one (1) position available currently, as an Independent Non-Executive Finance & Risk Director. Independent Directors should not already be associated with the London FA in any way, either as a London FA Council or general member. For this particular role we are looking for an individual who has a very strong grasp of financial and risk matters and significant commercial experience and acumen.

For an informal discussion regarding any of these positions please contact the CEO, Paul Bickerton, on Paul.Bickerton@londonfa.com

Diversity is at the heart of our strategy, because it is at the heart of grassroots football in London. We pride ourselves on the increasing diversity of our Board. We encourage applications from the widest range of backgrounds, particularly where there is often under-representation. We are particularly keen to encourage female, black, Asian and LGBT+ applicants, and applications from those with disabilities and from minority ethnic, faith and racial groups.

NON-EXECUTIVE BOARD OF DIRECTORS SKILLS MATRIX

The Non-Executive Board of Directors **skills matrix** gives an overview of the type of skills and experience we feel would add value to the London FA. This includes the specific role of the Finance & Risk Director.

		Expertise	Specialisms	Experience	Knowledge	Overview
Expertise, Experience & Knowledge	Non-Executive Football Directors Add value through sporting experience and connection with service users	Experienced in one or more of the following areas in football from a professional or grassroots background:	<ul style="list-style-type: none"> • Playing • Coaching • Managing • Volunteering • Professional football • Small sided recreational football • Refereeing 	<p>A widely recognised role model for their expert area within football</p> <p>Understands the importance of inclusion and diversity</p>	A depth of knowledge gained through experience in their specialist football activity	Able to understand, communicate and champion the needs of the diverse football community in London
	Non-Executive Independent Directors Add value through perspective, professional expertise & corporate experience	Qualified & experienced professionals with senior leadership expertise in any of the following areas:	<ul style="list-style-type: none"> • Legal & governance • Commercial & sponsorship • Marketing & communications • HR & people development • Inclusion & diversity 	A career with depth of experience in a specialist area at a senior level and breadth of expertise in organisational leadership	A thought leader within their subject, able to communicate and advise on best practice approaches	Able to translate professional knowledge and expertise to the LFA context and make sure of effective leadership in area of specialism
	Non-Executive Finance & Risk Director Adds value to the Board through expert financial advice and risk mitigation	<p>An accountant and experienced senior leader from a financial / risk management role where advising non-financial leaders is key to corporate success and sustainability</p> <p>Has significant commercial experience and acumen. Can support the CEO to develop and deliver a commercial strategy to attract new commercial partners to the business.</p>		A professional career at a senior level in finance, risk management and commercial activity	A depth of knowledge of accounting, reporting, risk management, governance, brand and commercial management	Able to provide best practice advice and guidance to the Board and CEO on all finance, risk and commercial matters

NON-EXECUTIVE BOARD OF DIRECTORS KEY CHARACTERISTICS

All Directors will hold collective responsibility for making sure the London FA Board is efficient and effective. The following characteristics apply to all roles.

Board Characteristics : All Board Directors		All Board Members
	Strategic advisor	<ul style="list-style-type: none"> Constructively check, challenge and support the development of the London FA's strategy Support the development of plans and programmes that will deliver the strategy Approve the annual operating and delivery plan
	Active ambassador	<ul style="list-style-type: none"> Be a positive ambassador for football in London, representing the London FA Act as a positive voice for the work of the London FA with the media Seek to expand public awareness of the work of the London FA
	Performance evaluator	<ul style="list-style-type: none"> Monitor organisational performance against plans Review and evaluate organisational performance against agreed objectives Make sure of efficient and effective corporate governance
	Finance & Risk manager	<ul style="list-style-type: none"> Demand robust measures to ensure integrity of finances Ensure systems of risk management and controls are in place Approve annual operating and capital expenditure budgets
	People leader	<ul style="list-style-type: none"> Determine and approve appropriate levels of resources to deliver the strategy Advise on the appointment, management & remuneration for Senior Executive Team Use expertise, time and connections to support employees
	Sports savvy	<ul style="list-style-type: none"> Act in the best interests of football in London Develop and maintain critical key relationships with the various sporting partners Continually seek to improve the sporting experience for all

ROLE SPECIFIC ACCOUNTABILITIES

With specific skills and experience, the Directors will add value to the Board by taking ownership of the following role specialist responsibilities:

Role Specific Accountabilities		Football	Finance & Risk	Independent
	Strategic advisor	<ul style="list-style-type: none"> Act as strategic adviser to the Board and staffing team on football 	<ul style="list-style-type: none"> Act as a strategic adviser on all financial, risk and commercial matters 	<ul style="list-style-type: none"> Act as a strategic adviser to the Board and staffing team on area of specialist expertise
	Active ambassador	<ul style="list-style-type: none"> Act as a positive two-way communications conduit between members and the Board 	<ul style="list-style-type: none"> Act as an ambassador for good governance with the Board, staffing team, partners and key funders 	<ul style="list-style-type: none"> Seek out and utilise business connections to build partnerships to support delivery
	Performance evaluator	<ul style="list-style-type: none"> Make sure that football products and programmes are having the desired impact on the field 	<ul style="list-style-type: none"> Regularly review the financial performance of the organisation and report to the Board 	<ul style="list-style-type: none"> Make sure best practice performance management is embedded in area of expertise
	Finance & Risk manager	<ul style="list-style-type: none"> Advise on areas of risk related to area of expertise 	<ul style="list-style-type: none"> Introduce and maintain robust financial and risk procedures and a clear commercial strategy 	<ul style="list-style-type: none"> Advise on finance & risk elements related to area of expertise
	People leader	<ul style="list-style-type: none"> Add value to the Board acting as a subject matter expert on participants, volunteers and coaches 	<ul style="list-style-type: none"> Add value to the Board acting as a subject matter expert on finance, risk and commercial activities 	<ul style="list-style-type: none"> Add value to the Senior Executive Team acting as a subject matter expert and mentor in area of expertise
	Sports savvy	<ul style="list-style-type: none"> Keep up to date with the latest thinking on football 	<ul style="list-style-type: none"> Whilst an interest in football is an advantage – previous experience working within sport is not a requirement 	



OUR SHARED VALUES AND BEHAVIOURS

Our values are at the heart of the London FA. Applicants are required to demonstrate positive behaviours that support these values.

London FA Behaviour Framework – All Board Roles	Values		Behaviours
	Integrity	We apply the principles of honesty, trustworthiness and fairness to everything we do	<ul style="list-style-type: none"> • Accountability • Decision-making • Trust • Transparency
	Leadership	We get the best out of other people and support and inspire them to maximise their potential	<ul style="list-style-type: none"> • Vision • Empowerment • Partnership • Achievement
	Performance	We deliver high quality work to exacting standards and actively embrace new ways of working	<ul style="list-style-type: none"> • Focus • Initiative • Insight • Innovation
	Collaboration	We work together to make great things happen for our organisation and our sport	<ul style="list-style-type: none"> • Responsibility • Teamwork • Inclusion • Communication

