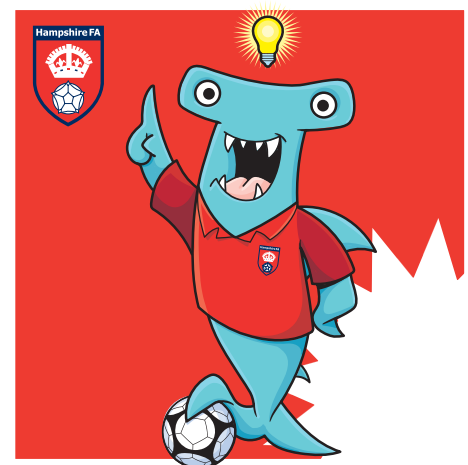
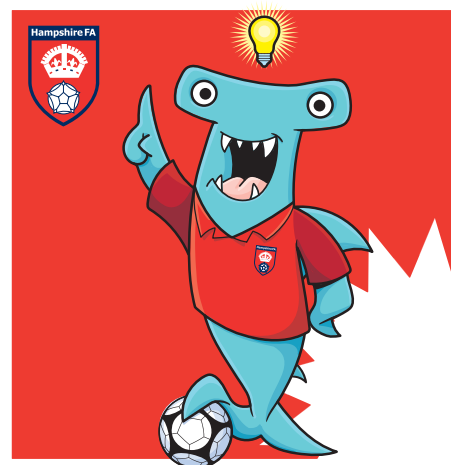
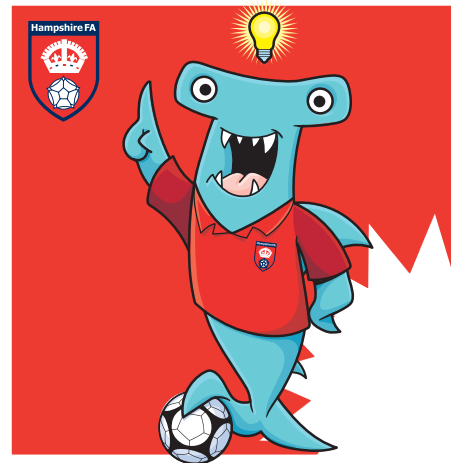
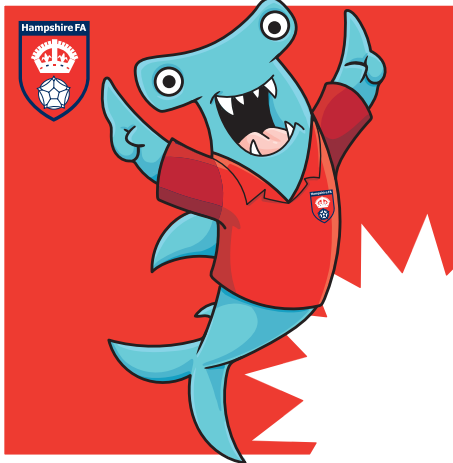




Hampshire FA
Foundation

HAMMY'S SNAP/MATCHING PAIRS SHEET 1 OF 5

HOW TO PLAY SNAP: Print and cut out the cards, then deal out equally amongst all the players. Take turns to place a card in the centre. If it matches the card already there, the first person to shout SNAP wins the pile. Most cards wins. HOW TO PLAY PAIRS: Print and cut out the cards. Place them face down in a grid. Take turns to turn over two cards. If it's a pair you keep it and try again. If not, turn back over and play moves to the next player. Most pairs wins.

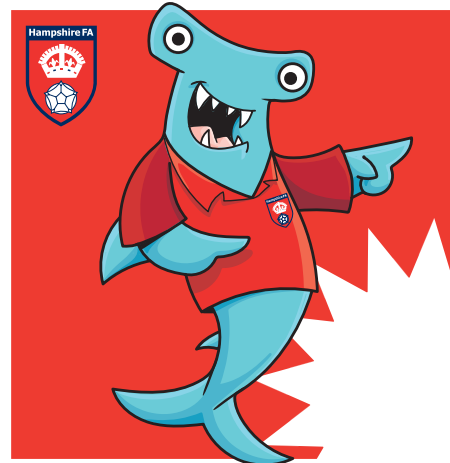
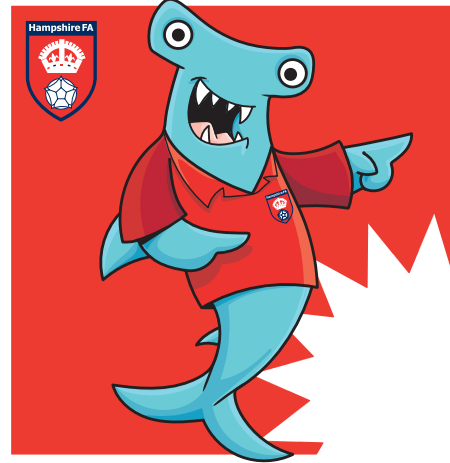




Hampshire FA
Foundation

HAMMY'S SNAP/MATCHING PAIRS SHEET 2 OF 5

HOW TO PLAY SNAP: Print and cut out the cards, then deal out equally amongst all the players. Take turns to place a card in the centre. If it matches the card already there, the first person to shout SNAP wins the pile. Most cards wins. HOW TO PLAY PAIRS: Print and cut out the cards. Place them face down in a grid. Take turns to turn over two cards. If it's a pair you keep it and try again. If not, turn back over and play moves to the next player. Most pairs wins.

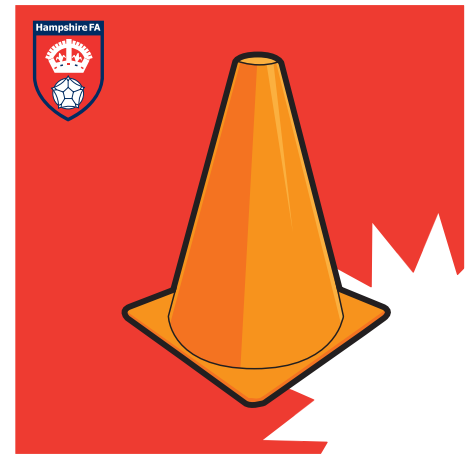
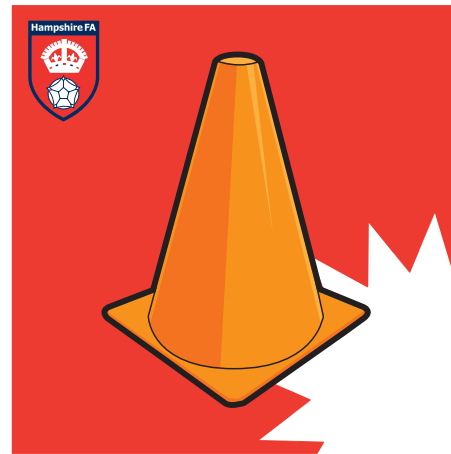
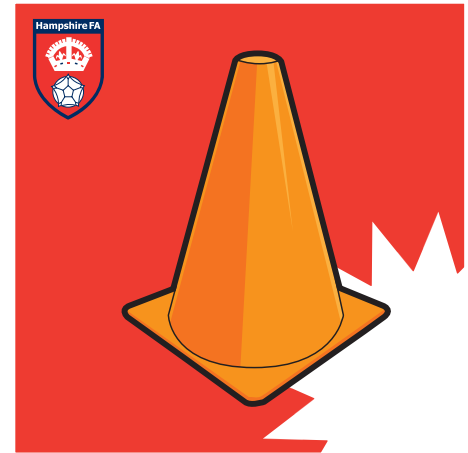
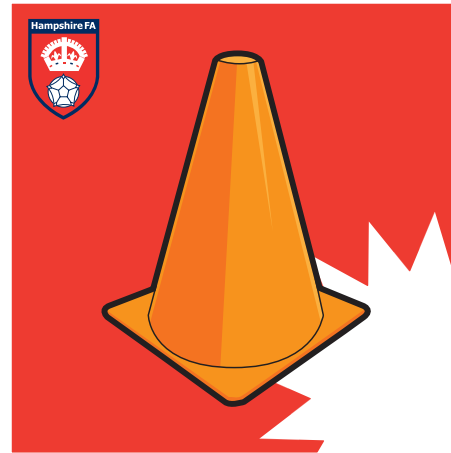
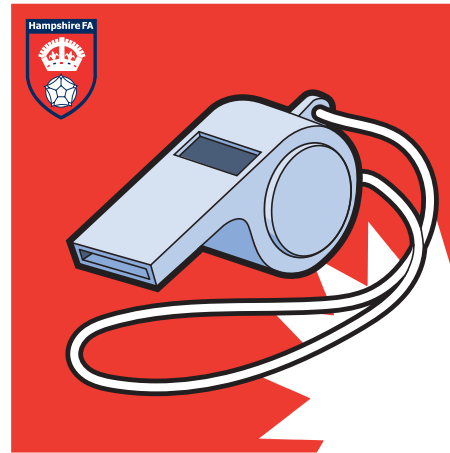




Hampshire FA
Foundation

HAMMY'S SNAP/MATCHING PAIRS SHEET 3 OF 5

HOW TO PLAY SNAP: Print and cut out the cards, then deal out equally amongst all the players. Take turns to place a card in the centre. If it matches the card already there, the first person to shout SNAP wins the pile. Most cards wins. HOW TO PLAY PAIRS: Print and cut out the cards. Place them face down in a grid. Take turns to turn over two cards. If it's a pair you keep it and try again. If not, turn back over and play moves to the next player. Most pairs wins.





Hampshire FA
Foundation

HAMMY'S SNAP/MATCHING PAIRS SHEET 4 OF 5

HOW TO PLAY SNAP: Print and cut out the cards, then deal out equally amongst all the players. Take turns to place a card in the centre. If it matches the card already there, the first person to shout SNAP wins the pile. Most cards wins. HOW TO PLAY PAIRS: Print and cut out the cards. Place them face down in a grid. Take turns to turn over two cards. If it's a pair you keep it and try again. If not, turn back over and play moves to the next player. Most pairs wins.





Hampshire FA
Foundation

HAMMY'S SNAP/MATCHING PAIRS SHEET 5 OF 5

HOW TO PLAY SNAP: Print and cut out the cards, then deal out equally amongst all the players. Take turns to place a card in the centre. If it matches the card already there, the first person to shout SNAP wins the pile. Most cards wins. HOW TO PLAY PAIRS: Print and cut out the cards. Place them face down in a grid. Take turns to turn over two cards. If it's a pair you keep it and try again. If not, turn back over and play moves to the next player. Most pairs wins.

