

Football Turf Pitch (FTP) testing guidance note

Background

The FA has changed the standard code of rules regarding the use of 3G FTP's. The rules will become effective from 2014/15 season and provided a football turf pitch (FTP) has been tested and appears on The FA Register it will be allowed to be used for match play in all competitions outside the National League System (NLS) i.e. Step 7 and below including Womens and Youth Football. There is already clear guidance for use of these pitches in FA competitions and also in the NLS and WSL.

This guidance note outlines the process by which pitches need to be tested and approved to appear on The FA Register – <http://3g.thefa.me.uk/>

Process

All pitches of all sizes wishing to be used for competitive play outside the NLS must be tested in accordance with and in the positions defined in the table below which is based on the British Standard for synthetic turf sports surfaces; BS EN 15330-1; by a recognised test house (a test laboratory accredited by FIFA and or having ISO 17025 accreditation by UKAS for each of the tests specified). The facility operator should commission and pay for the cost of this.

Full-size long pile synthetic turf football pitches should be tested in the positions shown in Figure 1. For smaller pitches (less than 3000 m²), position 1, position 3 and position 4 should be used.

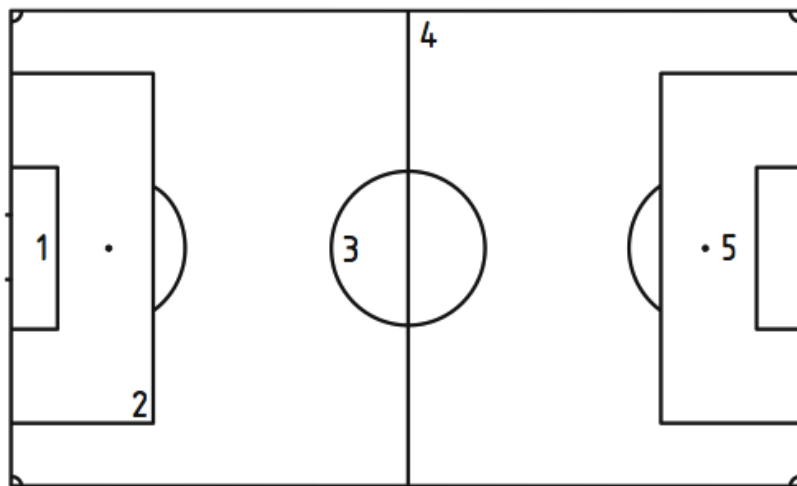


Figure 1 — Test positions for full-size football pitches

The pitch shall be tested for the following properties:

Characteristic	Test method
Vertical ball rebound	BS EN 12235 / FQP TM 01
Ball roll (0°, 90°, 180° and 270°)	BS EN 12234 / FQP TM 03
Shock absorption (AAA)	FQP TM 04a
Vertical deformation (AAA)	FQP TM 05a
Rotational resistance	BS EN 15301-1 / FQP TM 06
Surface regularity	BS EN 13036-7
Overall pitch dimensions	Surveyor's tape
Run-offs (sides and goals)	Surveyor's tape

A copy of the test report will need to be sent to The FA so they can review and determine if the pitch is suitable for competitive play. If suitable the pitch will be added to the register and the facility operator, County FA and Leagues will be notified of this. If not suitable then the site should not be used for competitive play until remedial work has been undertaken and another test performed. NB a pitch may still be suitable for training even if it is deemed unsuitable for match play. If a pitch needs to be re tested and this is not done on the same day, there will be an additional charge.

The pitch will need to be tested every three years to remain on the register.

Any pitch certified under the *FIFA Quality Programme for Football Turf* will be added to the FA register for three years from the date of the field test.

The register will be regularly updated and is available as a read-only document on TheFA.com

Communications

In order to ensure all sites are aware a communications plan will be developed. This will include : -

- Notifying sites that are intended to be used of the need to have the pitch tested
- Providing information to County FA's and using the FA website and social media to inform clubs and leagues of what the process is
- A view only register to be available on The FA.com and updated on a weekly basis

Test House Details and Charges

There is a list of companies accredited to perform the tests in Appendix 1 along with a fixed price list. The prices have been confirmed and approved and will be valid for the 13/14 season and will be reviewed at the end of the season.

County FA's may wish to coordinate a testing programme for strategic sites to take advantage of the best price options and this can be discussed further if required.