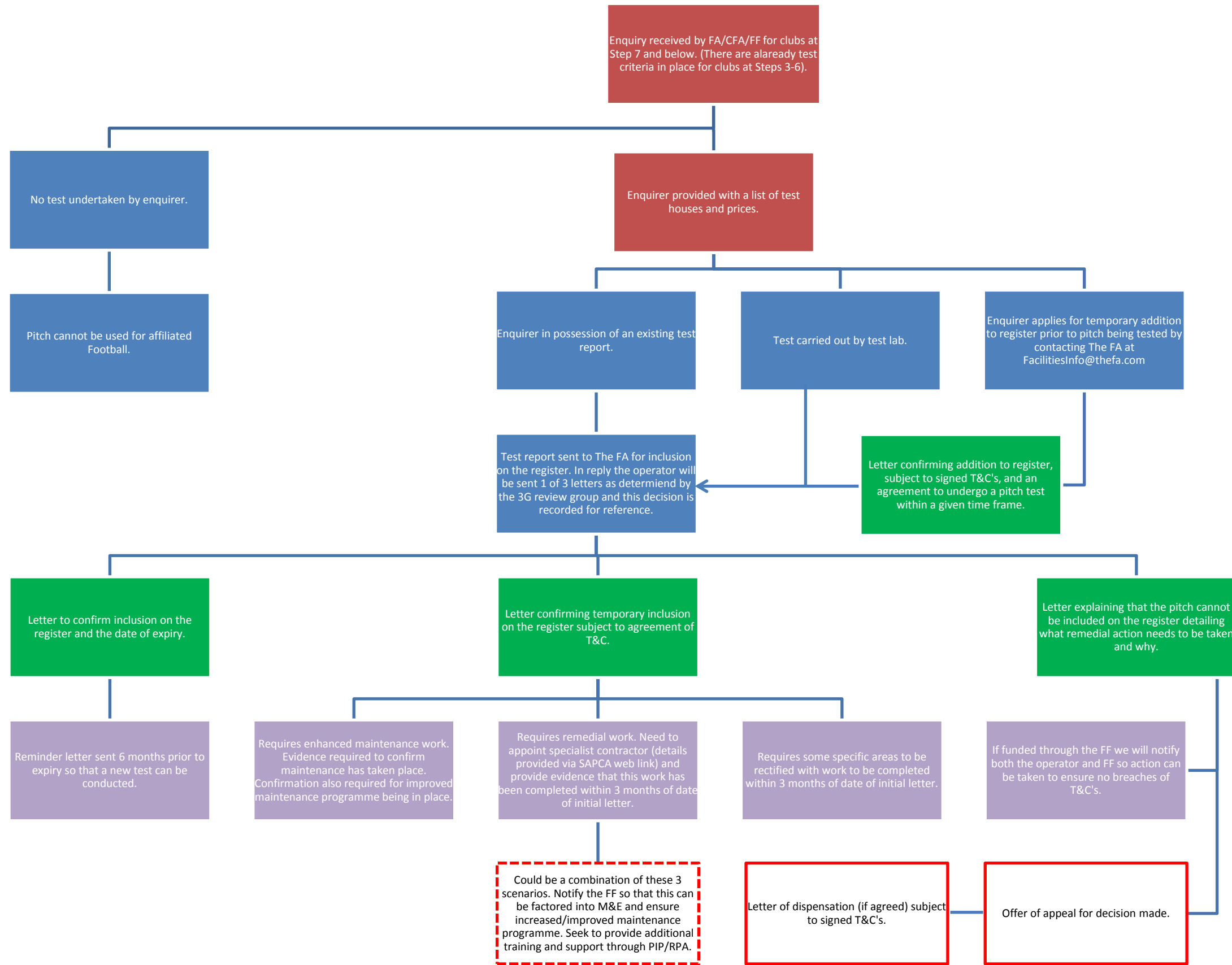


3G TESTING PROCESS - FLOWCHART



- Club**
1. Check the 3G register to check if the pitch is listed (<http://3g.thefa.me.uk/>).
 2. If the pitch isn't on the register, the Club should notify the Site Operator and The FA of their desire to use the pitch for affiliated matches.
 3. The Club/Site Operator will be provided with a list of test labs by The FA.
 4. The Club/Site Operator can apply for temporary inclusion on the register until a test has been completed, subject to agreeing T&C's. Contact FacilitiesInfo@thefa.com for details.
 5. The Club/Site Operator should approach the test labs to arrange a test to be carried out.
 6. Test completed.
 7. The test lab will send the test report to The FA.
 8. The FA will send a letter to the Club/Site Operator detailing decision taken (see flowchart).

- Site Operator**
1. The Site Operator receives an approach from a Club/League to use the 3G pitch or change a match to a 3G venue.
 2. Check the 3G register (<http://3g.thefa.me.uk/>).
 3. If the pitch isn't on the register, contact The FA/County FA for guidance.
 4. The Site Operator will be provided with a list of test labs.
 5. The Site Operator can apply for temporary inclusion on the register until a test has been completed, subject to agreeing T&C's. Contact FacilitiesInfo@thefa.com for details.
 6. The Site Operator should approach the test labs to arrange a test to be carried out.
 7. Test completed.
 8. The test lab will send the test report to The FA.
 9. The FA will send a letter to the Site Operator detailing decision taken (see flowchart).

- County FA**
1. The County FA receives an approach from a Club/League to use the 3G pitch or change a match to a 3G venue.
 2. Check the 3G register (<http://3g.thefa.me.uk/>).
 3. If the pitch isn't on the register, provide guidance to the Club/League/Site Operator and notify The FA.
 4. The Site Operator will be provided with a list of test labs.
 5. The Site Operator can apply for temporary inclusion on the register until a test has been completed, subject to agreeing T&C's. Contact FacilitiesInfo@thefa.com for details.
 6. The Site Operator should approach the test labs to arrange a test to be carried out.
 7. Test completed.
 8. The test lab will send the test report to The FA.
 9. The FA will send a letter to the Site Operator detailing decision taken (see flowchart).