

BCFA ACTIVITY PACK

Create your own football team!

And lots of fun, football related activities inside!



What will
you call
your team?

TEAM NAME?

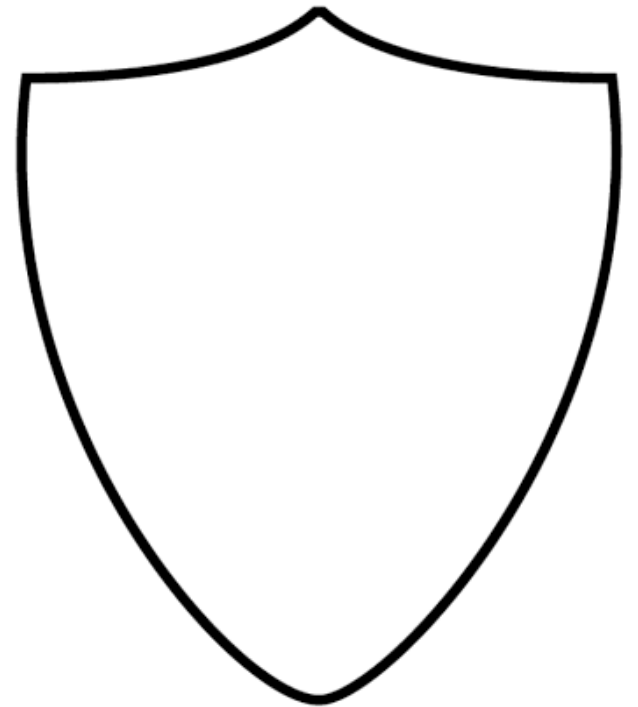
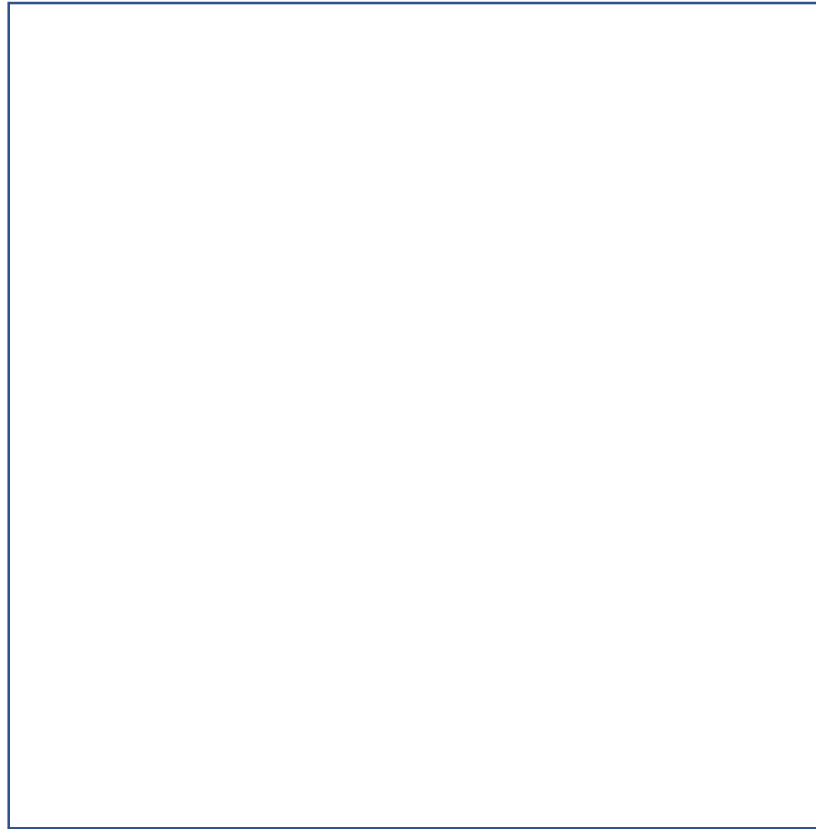
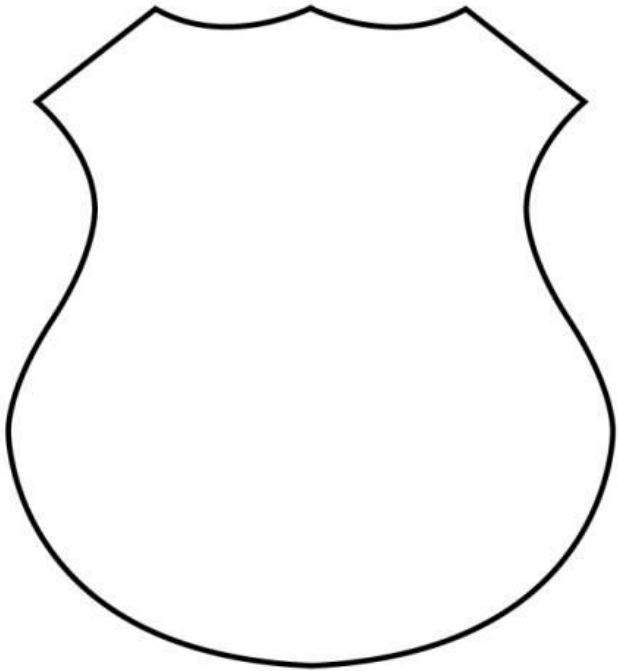
HOME STADIUM:

And what
stadium will
they play
at?

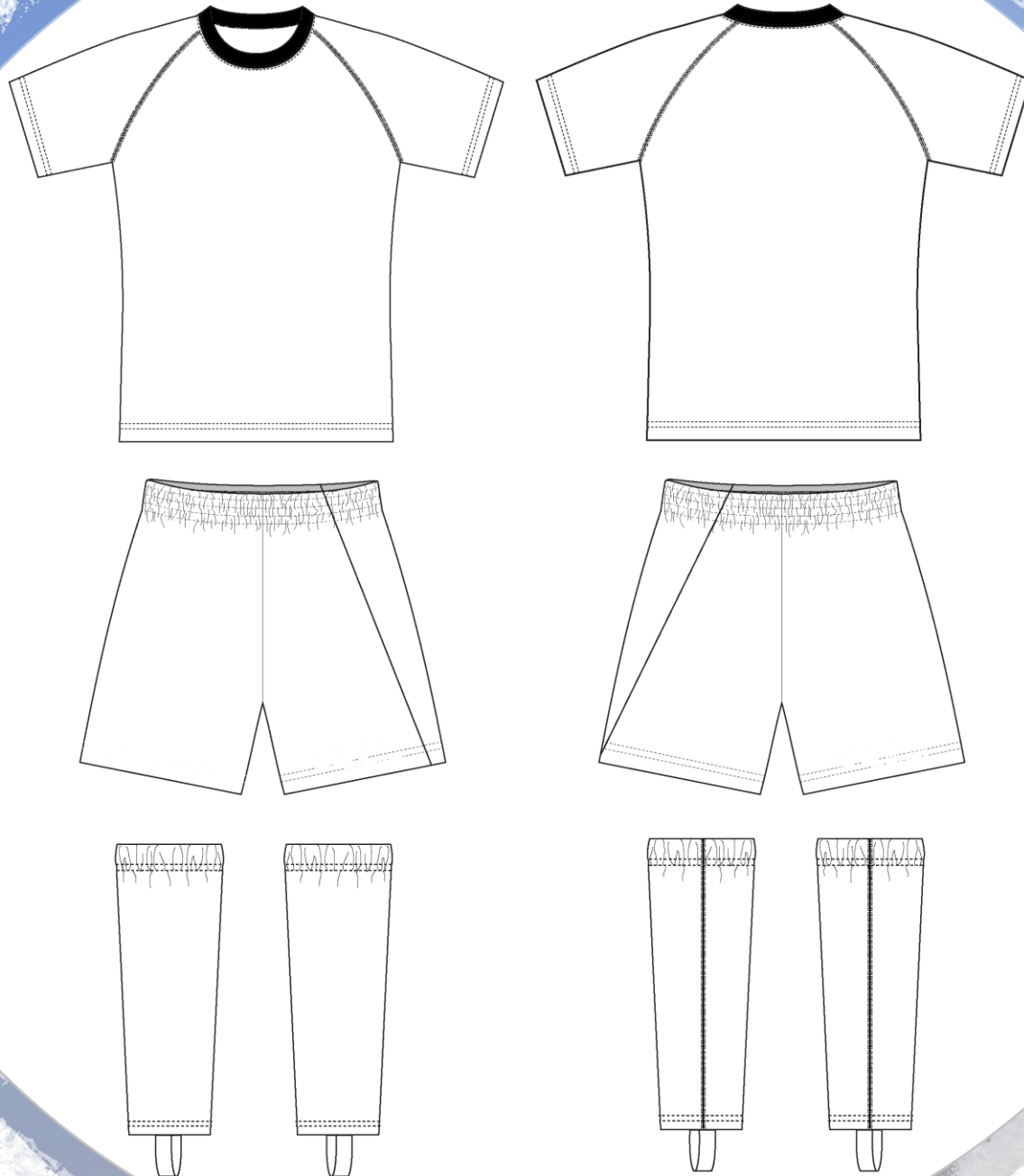


CREATE YOUR BADGE!

Use one of our templates, or use the box in the middle to draw your own!



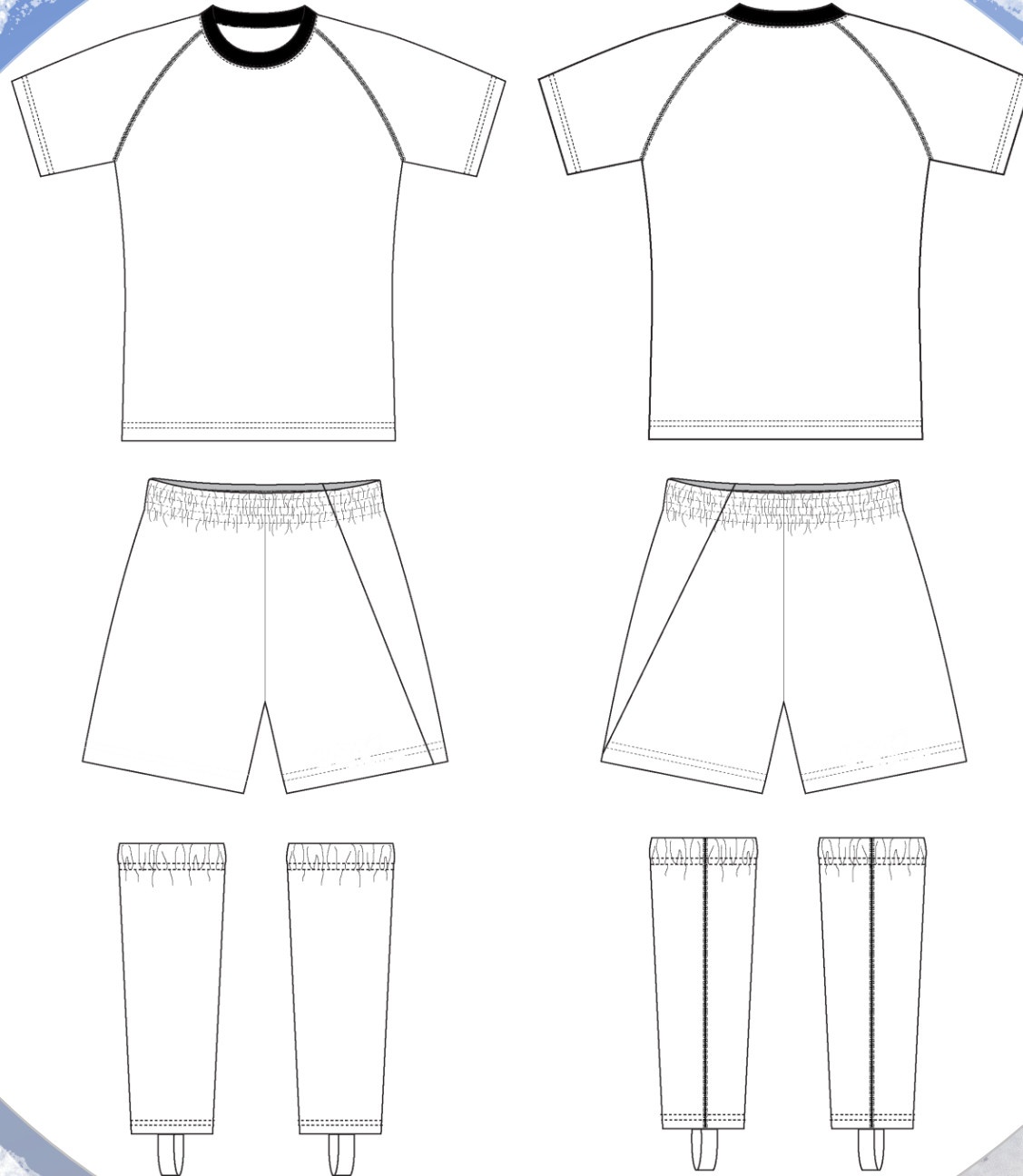
CREATE YOUR HOME KIT!



Colour in your home kit, and don't forget to add your badge!



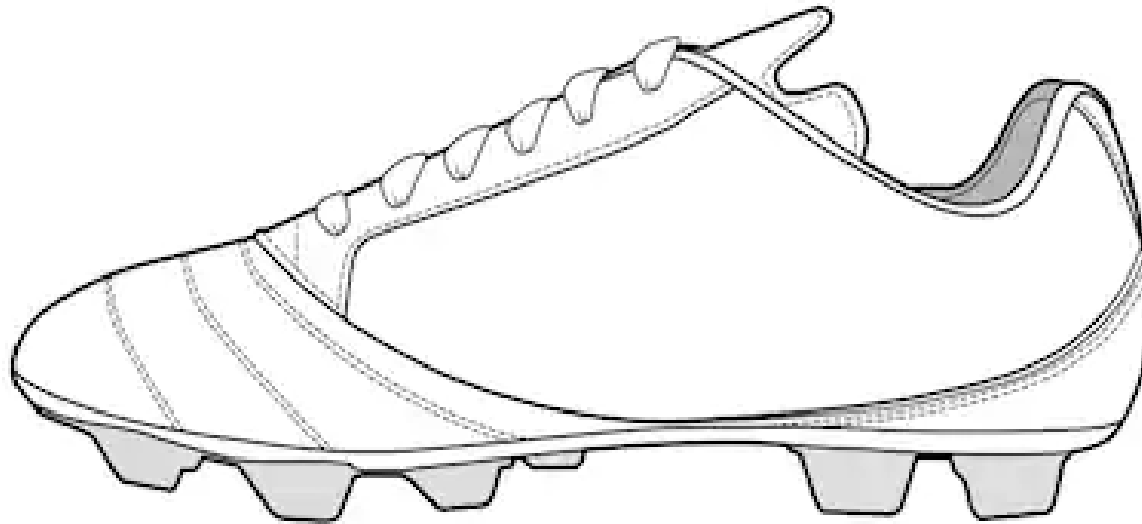
CREATE YOUR AWAY KIT!



Colour in your
away kit! Try
using colours
from your
badge, or go
completely
wild!



PERSONALISE YOUR FOOTBALL BOOTS!

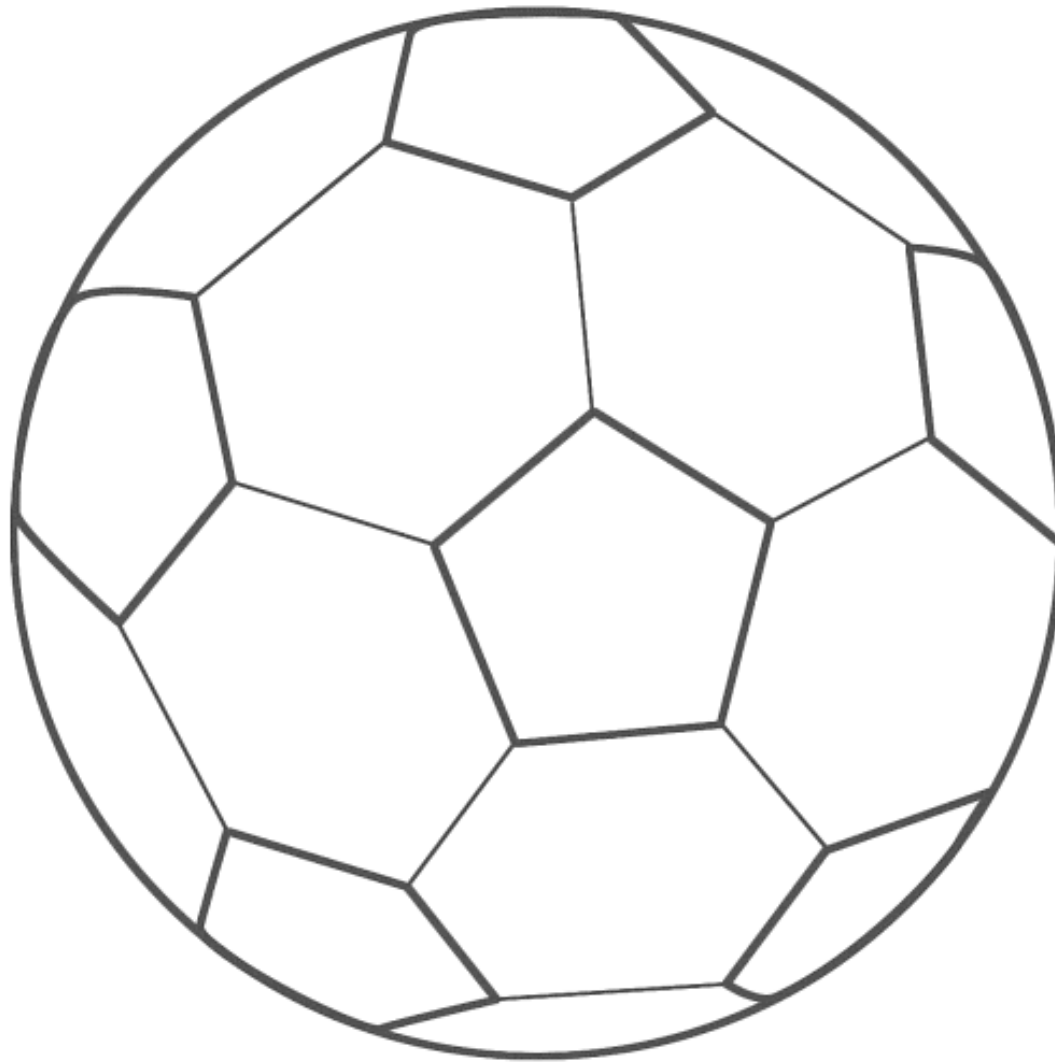


What
colours will
you choose?



CHOOSE YOUR FOOTBALL STYLE!

Choose
whatever
colours you
like to make
it stand out!



PICK YOUR PLAYERS!

Use players from your favourite teams, or make a team using your friends! And don't forget to fill in your substitutes below!



Write their surnames below their positions



COMPETITION TIME

Do you want to see your drawing come to life? Birmingham County FA are looking for YOU to create our Mascot!

What we need from you:

- We want the mascot to turn heads, make an impact! Something original!
 - What is its name?
- How will you make it unique? What about eye colour, tail length, will it even be an animal?! A cartoon? You decide!
 - What about a personality? What will its facial expression be?
 - What's its tag line? (If it has one!)
 - Make it outrageous, and creative!!

Upload your picture and tag us on Twitter
@BirminghamFA or Facebook at 'Birmingham
County FA' to be in with the chance to win!
Keep an eye on our socials to find out the prize!

(Space to draw
on the next
page!!)



CREATE YOUR MASCOT!

Draw your
own mascot!



QUIZ!

See if you can answer these questions correctly! (The answers will be at the back of this pack)

1. Where did the game of football begin?

- A) America
- B) Italy
- C) England
- D) Brazil
- E) Japan

2. What is another name for football?

- A) Ping Pong
- B) Bocce
- C) Soccer
- D) Jai-Alai
- E) Red Rover

3. At the professional level, how many players are on the pitch from each team?

- A) 9
- B) 12
- C) 13
- D) 11
- E) 10

4. Who is the only player who can use their hands during the game?

- A) Goalkeeper
- B) Defender
- C) Striker
- D) Midfielder
- E) Linesman

5. The referee usually wears what colour shirt?

- A) Blue and Gold
- B) Orange and White
- C) Black and White
- D) Red and Green
- E) Purple and Black

6. If you receive a red card, what happens?

- A) A warning
- B) Asked to leave the pitch
- C) A free kick
- D) A throw-in
- E) Nothing



FOOTBALL BINGO!

SCORED A GOAL	CAME ON AS A SUB	BEEN A GOAL KEEPER	TAKEN A CORNER
MADE A CHALLENGE	HEADER	TAKEN A PENALTY	BEEN CARDED
TAKEN A FREE KICK	BEEN A LINESMAN	COMPLETED A PASS	PLAYED A FULL MATCH
DEFENCE WALL	DRIBBLED THE BALL	MESSI BODY FEINT	THROW IN

Cross off
what you
have done
while
playing
football!

See if you
can get
Bingo!



WORD SEARCH TIME!

H	R	F	O	O	T	B	A	L	L	U	I	C	M
R	M	I	D	F	I	E	L	D	O	N	F	G	R
E	D	I	S	F	F	O	M	B	E	C	A	D	E
S	T	K	I	C	K	S	T	E	T	L	K	E	D
T	R	E	Y	A	L	P	T	D	F	I	E	R	N
R	E	L	H	S	U	B	S	T	I	T	U	T	E
I	F	A	L	C	C	S	B	T	P	S	L	R	F
K	L	O	A	O	T	O	C	O	R	F	R	E	E
E	O	G	D	A	T	A	R	A	O	O	E	O	D
R	I	P	D	C	T	O	E	N	R	T	P	S	K
T	A	I	E	H	O	Y	D	K	E	D	S	H	E
T	U	T	C	I	H	C	N	E	B	R	I	A	Y
M	C	S	D	O	M	E	E	R	E	F	E	R	F
A	L	T	K	U	D	E	E	S	E	E	K	D	O

Football
Substitute
Boots
Stadium
Referee
Card
Flag
Bench
Player
Striker
Defender
Goal
Penalty
Corner
Kick
Manager
Coach
Midfield
Offside
Trophy

Words can be
backwards and
diagonal too!



GUESS THE FOOTBALL TEAM!

Can you guess which team these football badges belong to? (Answers will be at the back of this pack!)

1.



2.



3.



4.



5.



6.



7.



8.



9.



10.



ANSWERS

Quiz Answers:

1. C
2. C
3. D
4. A
5. C
6. B

Guess the Team Answers:

1. Aston Villa
2. Chelsea
3. Manchester United
4. Birmingham City
5. Arsenal
6. West Bromwich Albion
7. Coventry City
8. Wolverhampton Wanderers
9. Walsall FC
10. Burton Albion

