

BIRMINGHAM COUNTY FOOTBALL ASSOCIATION



CLUB WELCOME PACK SEASON 2021/22

IMPROVING LIVES BY IMPROVING FOOTBALL

CONTENTS

3	WELCOME TO THE NEW SEASON FROM THE CEO
4	SAFEGUARDING
5	EQUALITY & INCLUSION
6	FA CUP TICKET BALLOT INFORMATION
7	AFFILIATION & COUNTY CUPS
8	FINANCE
9	ENGLAND FOOTBALL ACCREDITED
10	COACH EDUCATION
11	REFEREES
12	DISCIPLINE FAQ'S
13	TEMPORARY DISMISSALS
14	WOMEN'S & GIRLS
15	DISABILITY FOOTBALL
16	BUSINESS LEAGUE, VETERANS FOOTBALL,
17	OVER 45'S, WALKING FOOTBALL & DEMENTIA AWARENESS
18	RECREATIONAL FOOTBALL
19	PITCH IMPROVEMENT FUND
20	PITCH IMPROVEMENT PARTNERS & INVESTMENT
21	THE FA & MCDONALD'S GRASSROOTS FOOTBALL AWARDS
22	MATCHDAY APP
23	GENERAL DATA PROTECTION REGULATIONS (GDPR)
24	SUSTAINABLE FOOTBALL
25	SUSTAINABLE FOOTBALL PARTNERS & FUNDING
26	BIRMINGHAM COUNTY FA PARTNERS

WELCOME TO THE NEW SEASON FROM THE CEO

Thank you for affiliating for the 21-22 season after one of the most challenging periods in football's history let alone for all sport and UK plc. We have seen an influx of new clubs and you are one of over 1,100 football clubs who have affiliated this season which is a testament to the appeal of the game locally and the work of the many volunteers within Clubs and Leagues who provide a safe and enjoyable environment for the more than 4,700 teams and 80,000 players within our County boundary who participate in nearly 50,000 games during a full and 'normal' season.

Birmingham County Football Association is one of the largest, most admired and innovative County FA's in the country. We have an all-inclusive football FOR ALL philosophy and our dedicated team of 24 staff who administer, organise, govern, support, promote and develop all formats of the game in order to help grow new and existing Clubs with the overall aim of increasing participation in our National Game. The BCFA team is also reliant on all elements of the Whole Game System (WGS) so we share the same pain and frustrations as all our customers and we thank you for your patience and understanding and with fingers crossed that future enhancements benefit us all rather than hinder.

Our new 'Save Today, Play Tomorrow' initiative recognises our joint responsibility to lead on creating an environmentally friendly and sustainable football model in order to facilitate a positive step change to reduce single use plastic and carbon emissions which stain our game, our football facilities and the wider environment. With this in mind, I ask you and your committee and club members to think about how your players, coaches and spectators can help to clean up 'your' game with some quick wins and positive interventions so that the game can be enjoyed for future generations to come.

The social and economic impact of the game across the West Midlands is an incredible £522m each year which is why it is so important for people's wellbeing as well as the local economy that the game flourishes at every level especially after a long period with no football being played. There are 1,100 qualified referees who include FIFA, Premier League and EFL officials in our ranks, and over 90% of all the matches played are covered by a qualified match official. We have 14 local authorities whom we work closely with alongside seven professional clubs and their charity foundations - just some of the many delivery partners we engage with to support all the local and national participation initiatives.

We continue to work towards the FA's new Code of Governance as well as the Advanced Level of Equality Standard for Sport, having already proudly attained the Intermediate Level back in 2019. We take all allegations of discrimination seriously as part of the rigid discipline procedures which we follow and are working with West Midlands Police and community groups to make positive inroads on eradicating the disgraceful hate crimes which blight our game. Our experienced Designated Safeguarding Officer works closely with the statutory agencies and with our leagues and clubs on their compliance and best practice in order to make the game safer for children and vulnerable adults.

We have a highly innovative and pro-active approach to developing football and, along with the FA grants, we reinvest an additional £100k of our own surplus back into the game which yet again includes free affiliation and our very own Pitch Improvement Fund, Club Innovation Fund and Green Innovation Fund which Clubs can apply for throughout the season.

We hope you have an enjoyable and hopefully mask-free season ahead and we wish you and colleagues every success, whatever level you are involved in both on and off the pitch. Above all else and following the previous and on-going challenges of the pandemic, please remain safe, enjoy all the health & wellbeing benefits that the game offers and please RESPECT all participants as we move to a new normal.

We are here to help so please contact us via Support@BirminghamFA.com and we will do all we can to guide and support you and colleagues in your football endeavours.

Kevin Shoemake

CEO of Birmingham County FA

SAFEGUARDING

We are proud of our Club and League Welfare Officer network which provides support for volunteers, parents and children. Each youth club has at least one trained Club Welfare Officer (CWO) who is there to assist the member club in the provision of safeguarding. Each youth competition has at least one League Welfare Officer (LWO) that support our CWO network.

Sarah Willis is the Birmingham County FA Designated Safeguarding officer and the main point of contact for all Safeguarding concerns across the County. Our role is to support both CWO and LWOs through FA training and courses, welfare officer forums, and updates. Any Welfare Officer can also join the '**Birmingham County FA Welfare Officer Forum**' on Facebook. If you would like to know more about this support, or you feel you are missing out, please contact us on the details below.

Anyone working within regulated activity with children is required to have a Disclosing and Barring Service Check (DBS) carried out through The FA. Going through this process allows all clubs to adhere to their safer recruitment policies, ensuring that the right people are working within football. Each CWO has the ability to manage their own DBS checks so they are always aware who is clear to work in regulated activity. In addition to this, Birmingham County FA operate a 90, 60, 30 automated email reminder service for individuals, highlighting any pending expiry dates. Once a DBS certificate has expired, the individual is unable to hold any role of regulated activity within football and the Association hold the right to suspend the individual, team and club should this found to be breached.

Birmingham County FA, as with all County Football Associations, is regulated by the National Football Association in line with the Child Protection in Sport Unit of the NSPCC. The County FA regularly meet with the local authorities and local safeguarding children's boards, moreover we have active dialogue across all County Councils to ensure we remain compliant to all legislation. For the third year Birmingham County FA have complied with and passed a recent independent Safeguarding Operating Standard Assessment which is a mandatory requirement for all County FA's.

We offer various Safeguarding/Welfare Officer Courses for learners:

- Online Committee Members Course
- Safeguarding Children Course
- Welfare Officer Workshop
- Safeguarding Adults

These and other online courses offer learners a greater understanding of Safeguarding children and vulnerable adults for anybody that works within football, regardless of your involvement. The Welfare Officer Workshop will give all Club Welfare Officers the relevant knowledge of how to deal with any safeguarding issues within their club, ensuring that the club is safeguarding compliant.

**For further information please contact Sarah Willis,
Designated Safeguarding Officer & Respect Lead
Email: Sarah.Willis@BirminghamFA.com
Mobile: 07791 120 829 | Telephone: 0121 357 4278**

EQUALITY AND INCLUSION

In May 2019, Birmingham County FA were awarded the Intermediate Standard for Equality & Inclusion, making them only the second County FA to meet this standard. Attaining this award further galvanises the good work the Inclusion Advisory Group (IAG) are doing in the County, driving improved standards and policy at all levels of the game.

We clearly demonstrate below our commitment to making football **FOR ALL** with targeted interventions across:

- Extended Ramadan Football League
- Refugee Football Programme
- Extensive Disability Football Programme
- Women & Girls Football
- Dementia Friends Café



We picked up our Award for achieving Intermediate Standard for Equality & Inclusion at Wembley Stadium in May 2019

KICK IT OUT

“Kick It Out” is primarily a campaigning organisation which enables, facilitates and works with the football authorities, professional clubs, players, fans and communities to tackle all forms of discrimination. The campaign has been pivotal in persuading and supporting the game’s stakeholders to take their equality responsibilities seriously.

Kick It Out announced the launch of their new campaign, Take A Stand in 2020. It is a call to action initiative, encouraging people across the football community to take an action or make a pledge, in the fight against discrimination. It is the first digital campaign where individuals and organisations will be invited to publicly commit to their own pledge. The initiative marks a new chapter in the fight against discrimination in football, which will give fans the confidence, the tools and the means to confront discrimination and make a change.



Realising the essential role played by grassroots clubs in their local communities, Kick It Out aims to develop understanding between different backgrounds, cultures and beliefs so they can help make football more accessible and equal for all. The organisation is willing to provide assistance in any shape or form which will enhance inclusive practices either at a local or national grassroots level. Kick It Out can also help bridge the gap between local groups and the leading bodies within the game, who historically may have felt excluded or overlooked.

For further information, please contact: info@kickitout.org

FA CUP TICKET BALLOT INFORMATION

The application process for FA Cup Tickets opens on the 1st April, or the first Monday if this falls on a weekend, each year. The application window closes on the Friday after the second semi final is held.

The application form will be released on the Birmingham County FA website and social media channels. Each club is entitled to apply for two or four tickets in the end of the stadium of their choice. Applications for odd number of tickets will not be accepted.

Four price ranges will be available to purchase and the applicant will be able to rank the order of prices they would like to be considered.

All tickets provided will be in either the home or away end – No neutral tickets are available.

All successful applicants will be contacted via email approximately one week after the ballot closing date. The number of tickets issued to each applicant will be subject to demand, and meeting the strict criteria outlined in the application form.

Tickets must be paid for in full, either via card or cash before they can be released - Cheques will not be accepted.

All successful applications will incur an admin charge of £3, which will be added to the cost of the transaction at the payment stage. If tickets are to be posted out to the applicant, they will be dispatched by secure postage and the applicant will have to cover this cost at the relevant special delivery postal price at the time of application.



AFFILIATION & COUNTY CUPS

ONE CLUB AFFILIATION

After the sudden termination of the 2019/20 season, Birmingham County FA were delighted to offer free affiliations for the 2020/21 season. With the curtailment of the 2020/21 season and the overwhelming success of 'One Club Affiliation', this option will be available again during the 2021/22 season.

This gives club's the opportunity of affiliating all teams under one main club. By doing this, one lead secretary will oversee the general administration of the club. This secretary can then give access to other assistant secretaries, who will be able to access the online affiliation form as well as the club's main dashboard.

HOW IS AFFILIATION PROCESSED THROUGH WGS?

To do this you will need to login to Whole Game System, click on the club tab before navigating to affiliation on the left-hand bar which will open the relevant form. You will then need to work through the eight stages, amending them accordingly before selecting your preferred Personal Accident Insurance. After submitting your affiliation, this gets validated by Birmingham County FA and will be invoiced subject to all mandatory safeguarding requirements being fulfilled by youth teams and payment being received.

Once this is completed, approval will be given.

PLAYER REGISTRATION

Player Registration can be done online via the WGS subject to competing in a participating league.

To do this, your players must be added on to Whole Game to then be assigned to teams, consent granted, prior to submission to the league who will then approve the registration.

Birmingham County FA can provide assistance with this process.

Please contact, Support@BirminghamFA.com.

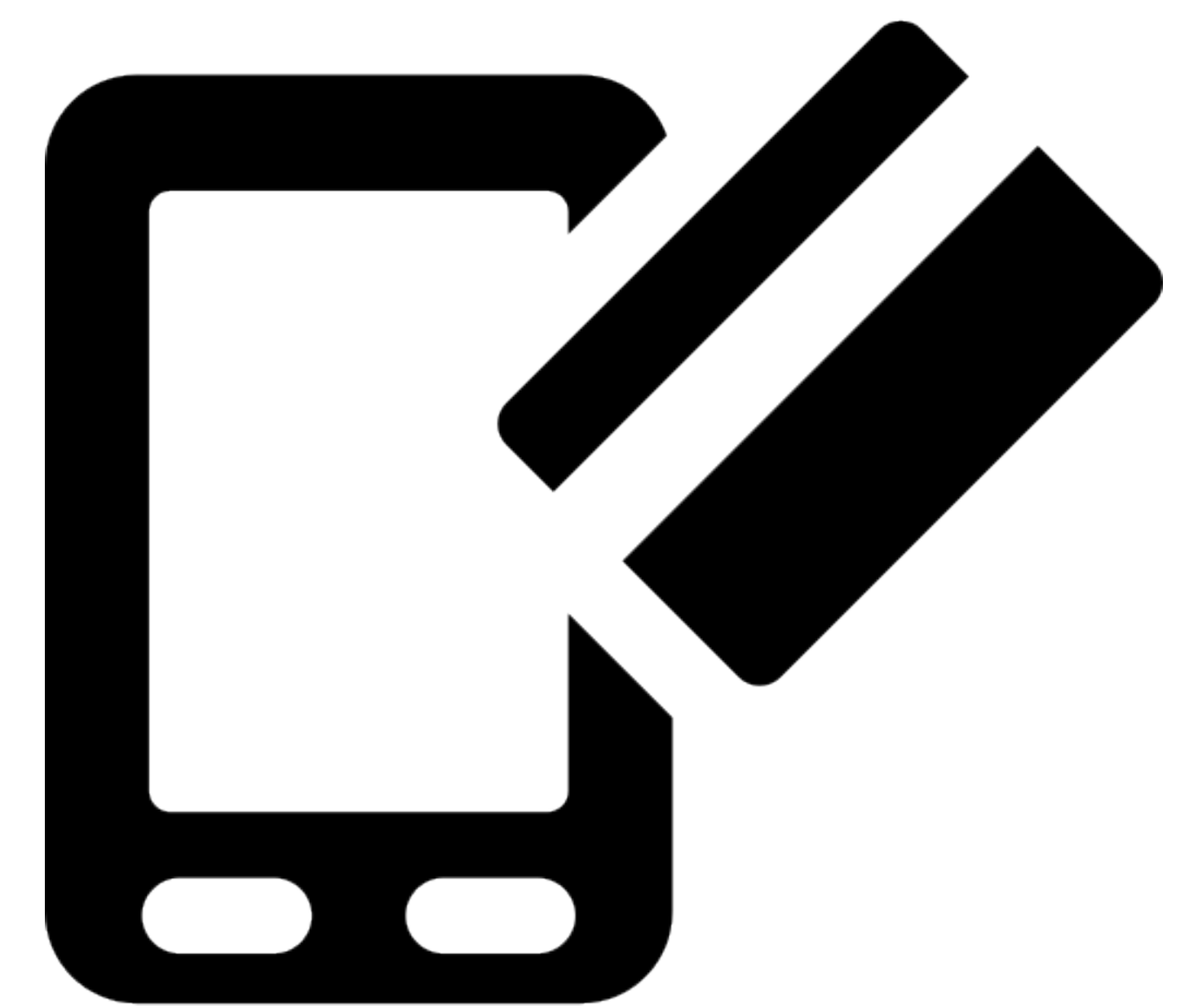
AFFILIATION PACK 2021/22

We were pleased to provide an affiliation pack ahead of the 2021/22 season for all clubs and leagues to identify the support that Birmingham County FA will give before, and during the new season.

Click [here](#) to view.

FINANCE

There are different payment methods available when you need to make a payment to Birmingham County FA. See below for the details:



WHOLE GAME SYSTEM

To make a payment, your first port of call should be the Whole Game System and you can find the guidance that explains the steps you need to take in order to make payments [here](#).



If you experience any issues with the Whole Game System, please follow the steps to use our external payment system [here](#).

Please remember when making a payment on WGS, you must acknowledge the case first to be able to complete it.

CONTACT

If you have any further finance queries or issues, our Finance Officer can be contacted between 9am – 5pm (Monday - Friday) on 07815 003823.

Our support portal is live and colleagues can be contacted on: **Support@BirminghamFA.com**.

ENGLAND FOOTBALL ACCREDITATION

Football leagues and clubs accredited by The FA have positively changed the football landscape over the last 20 years, creating the ideal environments to nurture players, coaches and volunteers. The result is greater diversity and inclusivity throughout football. England Football Accreditation replaces The FA Charter Standard and is the next chapter in this amazing story as we unite even more communities by supporting Leagues and Clubs over the next 10 years.

In addition, The FA recognise Clubs that provide one or more of the accredited player pathways, either for male, or female, or for disability players.

The star that a club achieves and is then recognised for, demonstrates that they have football teams within their set-up that support the three accredited player pathways. It helps us to align the relevant support and services you need to become the best version of your Club.

THE TRANSITION

All existing FA Charter Standard Leagues and Clubs will automatically become England Football Accredited.

Clubs will be given until the 2023/24 season to build their pathways before determining initial stars rating.

The transition will take time and we look forward to connecting and working with leagues and clubs to help provide best possible standard of football up and down the country.

HOW TO GET ACCREDITED

If your league or club was part of The FA Charter Standard programme in the season 2020/21 you will automatically be part of England Football Accredited.

Non-accredited leagues and clubs can apply to join after November 2021.



ACCREDITED
PART OF ENGLAND FOOTBALL

COACH EDUCATION

The FA has announced the decision that all coach education delivery will be moving across to an online learning platform, administered by The FA centrally, with effect from March 2021. The FA provides a range of learning opportunities for you to engage with, and the courses will be suitable for coaches of all levels.

For more information, [click here](#).

COACH DEVELOPMENT OFFER

Due to The FA's recent changes to the course programme, Birmingham County FA will soon be launching our new Coach Development Offer. This will include both face to face and virtual workshops to support our football volunteer workforce. The sessions will help people develop their skills and will allow attendees to better understand the next steps in their own coaching journey.

START YOUR COACHING JOURNEY

STEP 1: **BT Playmaker**

STEP 2: **Introduction to Coaching Football** – (previously known as FA Level 1)

(includes FA Safeguarding Children & Introduction to First Aid in Football)

STEP 3: **UEFA C** (previously known as FA Level 2) - Further Details TBC

STEP 4: **UEFA B** (previously known as FA Level 3) - Further Details TBC

WANT TO GAIN, RENEW, OR EXPLORE?

FA Safeguarding Children

FA First Aid

FA Welfare Officers Workshop

WANT TO UPDATE YOUR KNOWLEDGE?

FA Concussion Guidelines / Sudden Cardiac Arrest

Guide to Safeguarding Adults

Safeguarding for Committee Members

COURSES TO BE CONFIRMED

FA Goalkeeping / Futsal / Disability

DO YOU WANT TO BECOME A REFEREE?

Express your interest in our Referee Courses by [clicking here](#).

OTHER USEFUL LINKS

The Boot Room

FA Support Portal

Online Resources

REFEREES

Birmingham County FA are proud to have 1,100 referees who operate across a number of competitions around the County and nationally. Our referees range from the FIFA match officials who cover the Premier League, Women's Super League and International Competitions to mini soccer referees who operate across under 8's grassroots football every Saturday and Sunday morning.

HOW CAN YOU GET INVOLVED?

The first step to get into refereeing is to complete the Referees Course (You need to be 14 or older to enrol onto this course). This course takes place across a number of dates and involves practical assessments.

HOW ARE REFEREES APPOINTED?

Appointments to fixtures are made by referee secretaries and appointment officers across the County FA. Referees at grassroots level would be allocated an appropriate appointment based on leagues in their area.

TRAINING EDUCATION DEVELOPMENT PROGRAMME (TED)

Each season, Birmingham County FA identifies referees with the potential and drive to progress in the game. They are invited to an evaluation evening where they are tested on the laws of the game and on the field of play. The group is made up of 30 referees from Level 7 to Level 3 who are given quality training and specialist coaching on how to progress in the game.

FA CORE

The FA Centre of Refereeing Excellence (CORE) aims to provide a certain amount of identified referees at all levels with quality training, education and development opportunities which are delivered both centrally and across a number of regional locations. FA CORE is for those referees who are demonstrating that they have clear 'potential' and 'opportunity' to progress in refereeing regardless of which part of the country they are from, their gender or age. The CORE programme is a national program for which the County FA's can identify potential referees who have the attributes to progress across the different levels.

THE FA NATIONAL REFEREE STRATEGY

The National Referee Strategy demonstrates the FA's commitment to maximising opportunities for inclusion, participation and development at all levels of the refereeing pyramid across a range of roles in refereeing. The strategy incorporates all parts of refereeing from how to recruit from all communities in the country to how referees are developed from the Referees Course.

DISCIPLINE

The below covers the basic information you should be aware of with regards to discipline matters dealt with by the County FA. There are seven categories for Match Based Discipline:

- Saturday
- Sunday
- Midweek
- Veterans
- Youth
- Representative
- Further Education

Automatic suspensions for dismissals are aligned to one of the seven categories – meaning that if you are dismissed in a game, you are unable to play again in the same category of football until the automatic match based suspension is served. This means that a player sent off in Sunday football would still be eligible to play for a Saturday team as the suspension would apply to Sunday football only.

Having a category based approach is a fairer and more consistent system – for example under the previous system, a player sent off for their Sunday team may have received a one match ban, but because of bad weather he or she may not have been able to serve the suspension for six weeks. During this time his or her Saturday team may have been able to play matches, but the player would have missed out as they were waiting to complete the one match suspension from his or her Sunday team. Any player who is dismissed from the field of play in a friendly fixture is suspended automatically for 1 match from the next friendly fixture for that team, irrespective of the offence committed.

Should Birmingham County FA deem that the offence committed warrants further disciplinary action, they do have the ability to raise a misconduct charge if they feel the standard punishment is insufficient. A misconduct charge will be issued for a reported incident that does not fall under a standard dismissal offence or serious offence. If you receive a misconduct charge and it is found proven, any suspension will usually be from all football at County level (Step 5 and below).

FAQ'S

Q: How much is the administration fee?

A: The Administration Fee is £15.00 for non-caution offences (sending-off and all misconduct). The administration fee for a caution is £12.00.

Q: If a player is sent off or cautioned, who is liable for the Fine/Administration Fee?

A: If the player is involved in youth football the club is liable for the fees. If the offence is in open aged football it would be the player's responsibility to pay the fine, but the club are responsible to ensure this does get paid in the first instance.

Q: I have recently signed a player and I need to check if they have any unspent suspensions, how can I check this?

A: County Associations provide weekly statements of participants who are currently serving suspensions or have a pending suspension on their website. There is also a facility within the Whole Game System to search for players and attach your club which will show the status. If after checking you are still unsure or unable to find the player you can contact the County FA and provide their name, address and date of birth, who will then inform you of the current status.

DISCIPLINE

FAQ'S CONTINUED

Q: If a club plays a player who is under suspension, who gets charged?

A: It is both the responsibility of the club and player concerned to ensure that the player does not participate whilst under suspension. Therefore both the club and player would be charged.

Q: When will a suspension start for a player who has been sent off?

A: All suspensions commence seven days after the date of the sending off. If the club have not heard or received confirmation within two working days they should make contact with the County FA.

Q: I have to write an extraordinary incident report. What do I include?

A: 1. Minute of the game

- 2. Who (best practice is to provide a name, if not accurate descriptions or shirt numbers)
- 3. What happened (be factual, 'I saw this', 'I was told this')
- 4. Include exact wording ('abusive language' is not always enough)
- 5. Where were you positioned
- 6. You have told the individual that they are being reported

Q: How do I deal with misconduct from managers, coaches and other non-playing participants?

A: You can issue yellow or red cards for misconduct.

E.g. Yellow - Regularly not staying in their technical area, shouting dissent to you, throwing/ kicking drink bottles, sarcastic clapping or gestures that show lack of respect, gesturing for a yellow or red card

Red- Leaving the technical area to show dissent to you, leaving the technical area to act in a confrontational manner, coming onto the pitch to confront you at half or full time, using offensive, insulting, or abusive language and/or gestures, receiving a second caution.

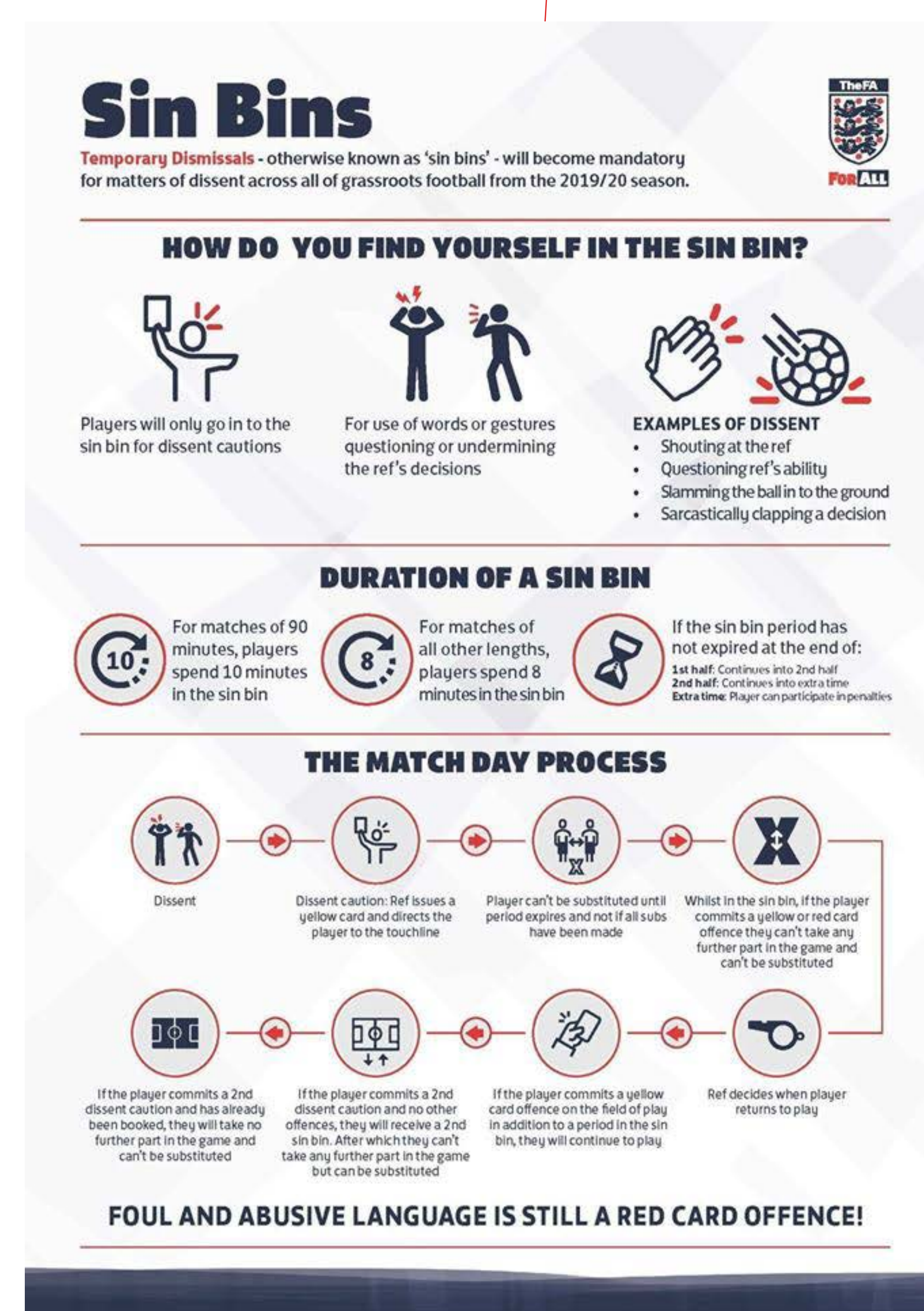
TEMPORARY DISMISSALS

As you may be aware, the implementation of the Sin Bin Programme for all on-field incidents of dissent are now mandatory across all grassroots football since the beginning of the 2020/21 season.

Please see below to access resources that should assist you with this process, which includes this helpful infographic with key information.

Click here for more information via our website.

Click here to watch our Temporary Dismissals Presentation.



WOMEN'S & GIRLS FOOTBALL

Wildcats Wildcat Centres are an introductory sessions for girls 5-11. To become a Wildcats Centre you must complete an application which is usually open in December- February. Please refer to our website for updates or alternatively email Support@BirminghamFA.com to be added to the communication list.

12-16 year olds Small funding pots are available to run recreational sessions for this age group. These must be planned to become self-sustaining after 12 weeks and to run throughout the normal season.

16+ Small funding pots are available to run recreational sessions for this age group. These must be planned to become self – sustaining after 12 weeks & to run throughout the normal season.

AFFILIATED FOOTBALL

Available leagues in the County for players are:

- The Central Warwickshire Girls League (U7-U18)
- The Stourbridge & District Youth Girls Football League (U8-U12)
- Birmingham County Womens League (Adult)

League football is not the only avenue, with there being more ways than ever to play:

- Over 30's
- Mum's Play
- Women's Walking Football

There are small pots of funding available for the above although please note that the sessions must have a plan to be self-sustainable after 12 weeks, run through the regular season and for the Walking Football have the potential to move to a league format.

For further details on this, please contact: Vicky.Mitchell@BirminghamFA.com.

PARTNERS

We are working to support local clubs in partnering with the relevant education and community groups to ensure the player pathway is well connected in the County. If you want to build your links with local schools, colleges or universities delivering FA programmes or the other community groups engaging with females (Uniform Groups, Faith Groups etc.) please let us know your location and the age you are looking to work closer with.

NEWSLETTER & SOCIAL MEDIA

We want the good news stories and positive work you are all doing to be heard as far and wide as possible. To do this, we encourage you all to send in material for our brand new quarterly female football newsletter called **ROAR!** Please send any details you would like included to Vicky.Mitchell@BirminghamFA.com at any time during the season.



@BCFAWG - Make sure you like and follow the brand new Facebook page dedicated to all things women's & girls to keep up to date with everything in our County.

[Click here](#) to view more information on our website.

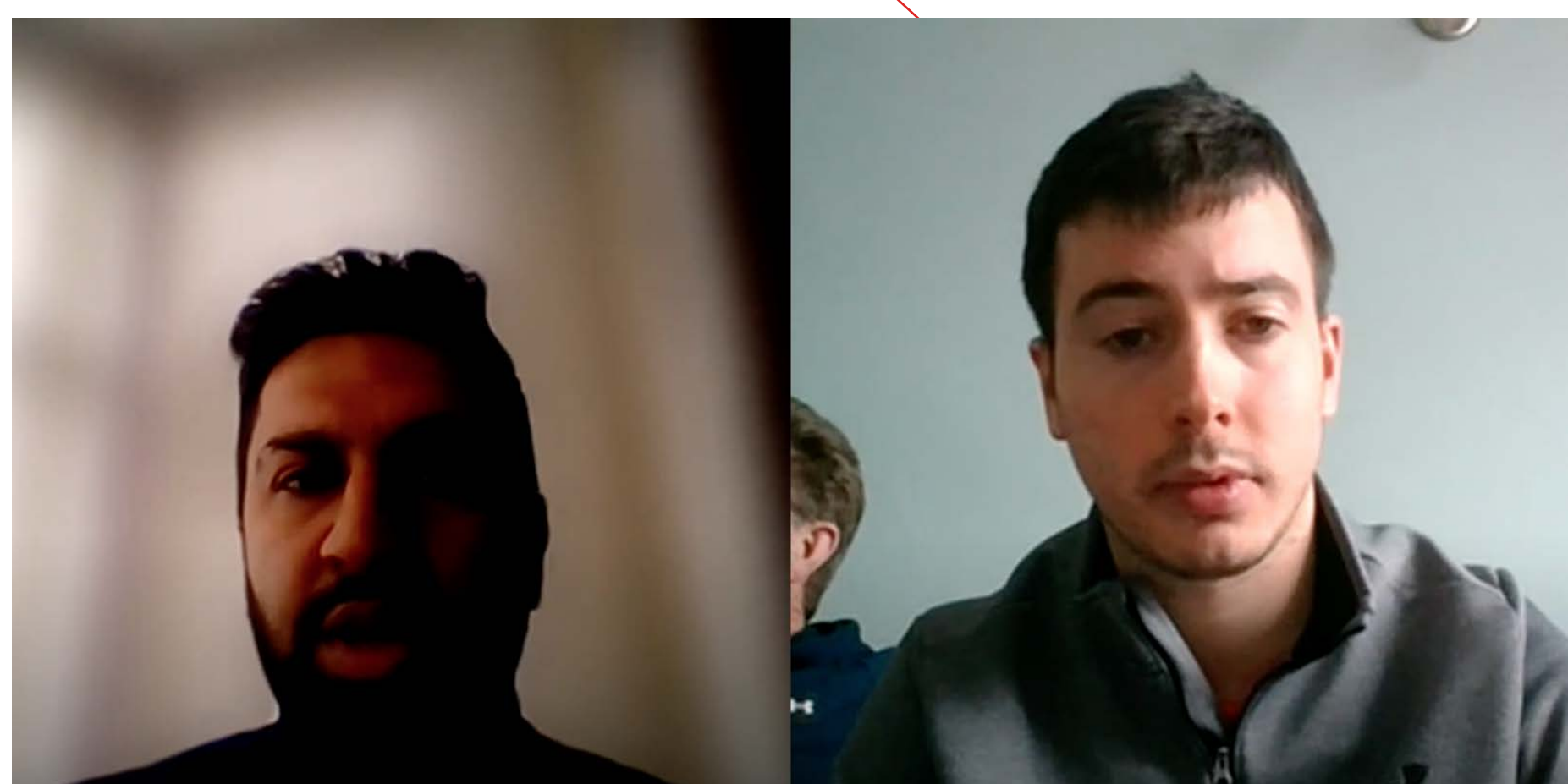
DISABILITY FOOTBALL

From grassroots to the elite game, whether you are a coach or a player, here is how you can participate in disability football.

Whatever your ability level, there has never been a better time to get involved and play disability football in the Birmingham County FA region, with there being more opportunities than ever.

For more information on disability football, please contact: **Jasbir.Batt@BirminghamFA.com**

Click on the links below to see how you can get involved:



Blue Monday

Click here to view Charlie Fogarty talking to Jas Batt on Blue Monday 2021



Female Development League

Click here to watch what happened at this inaugural event



Short Film: How Football Became Terry's Lifesaver

Click here to watch what happened when we followed Terry Bryan, a former footballer who, today, lives with dementia



Role Models Programme

Click here to watch Harry Baker, the CP European Championship Golden Boot winner, talk about PAN Disability Football



How Walking Football helped Steve Rogers' recovery

After a tragic accident, **click here** to find out how Walking Football helped Steve Rogers.

BUSINESS LEAGUE

Building morale in a workplace is paramount to the success of any organisation. The Birmingham County FA Business League is designed to get colleagues to keep fit and socialise outside of the workplace in a flexible, relaxing and competitive environment.

The league runs using a flexible format where teams have the option to play 7, 9 or 11-a-side, with the 11 a-side format being the most popular. We are also the first County FA to pilot the league as mixed gender, allowing males and females to participate.

We are pleased to confirm that following positive feedback from all teams we will continue to offer these formats for the 21/22 season. The league runs from February to October. Each division winner will go through to the semi finals, with the final played at St. George's Park - the home of English football.

Previous winners include:

Ash Green School (2015)

Jaguar Landrover (2016)

Dudley Police (2017)

Firearms Operation Unit (2018)

Jaguar Landrover Solihull (2019)

At this time, expressions of interest are being accepted so if this is something you think your workplace would be interested in, please contact **Harley.Hetherington@BirminghamFA.com**.



The Business League Final takes place on the indoor 3G at St. George's Park each year.

VETERANS FOOTBALL, OVER 45'S & WALKING FOOTBALL

Here at Birmingham County FA we are keen to keep people playing the beautiful game for as long as possible. We are constantly exploring opportunities for those in or around their 50's to continue in the player pathway before reaching Walking Football. Most recently we have created the Birmingham County FA Over 45's League, which is a 9v9 format running bi-weekly on Sunday evenings at Boldmere St Michaels.

Birmingham County FA are proud to have a full pathway for players who wish to continue playing throughout their 30's onwards. We have a number of Leagues who operate over 35's divisions alongside a bespoke 9v9 over 45's league and a Walking Football League which includes an over 50's, over 60's and over 63's division.

For further details or to find out more about 45's provision within your local area, please contact: Harley.Hetherington@BirminghamFA.com.

DEMENTIA AWARENESS

Birmingham County FA is striving to make football a more dementia friendly environment. Working with Active Partnerships, community groups and grassroots football clubs, together we can make small changes that make a big difference to the lives of those living with dementia and their carers.

Birmingham County are encouraging more clubs to run their own football focused Dementia Café as this is a great opportunity for likeminded people who have a passion for football to come and chat about their memories and experiences from the game, whether that is playing at any level or just spectating. Activities on the day could include Spot the Ball and Subbuteo, which always sparks some social interaction.

Existing reminiscence sessions include;

Wolves Foundation, Villa Foundation, Albion Foundation, BCFC Community Trust, Walsall FC Community

If your club would be interested in getting involved or simply want to find out more information, please contact: Joe.Robinson@BirminghamFA.com or Jasbir.Batt@BirminghamFA.com.

**LET'S TALK
FOOTBALL**
DEMENTIA AWARENESS



RECREATIONAL FOOTBALL

SNICKERS JUST PLAY

"A recreational form of football providing access for adults to affordable, fun, organised kickabouts in suitable facilities with trained organisers in their local area."

Snickers Just Play is purely for adults, for men, for women, for those who think they're talented and for those who think they aren't. It's also for those with a disability, 16–25's, women only or even veterans; there is a kickabout designed specifically for you, whatever your age or ability.

The Snickers Just Play scheme is recreational football in its purest and simplest format. It's about turning up for an hour of exercise, socialising and having fun. It is football for those who do not or cannot commit to a long arduous season of training and weekend matchdays.

Funding of £200 is available to groups who run recreational sessions for adults (16+), if applying to run one of these centres, one individual must undertake the online FA Playmaker Course.

Just Play sessions can be added to The FA's website which will enable people searching for local kickabouts to sign up to your session which helps the Centre to grow in numbers.

For more information please contact: Luke.Bowles@BirminghamFA.com.



PITCH IMPROVEMENT FUND

Birmingham County FA established the Pitch Improvement Fund (PIF) a few seasons ago to support clubs with match funding toward the purchase of maintenance kit and equipment. The clubs involved can apply for up to £5000, which can be in conjunction with Football Foundation funding. Since the PIF was established, Birmingham County FA have supported grassroots clubs with over £60k with our bespoke range of funds.



PitchPower allows for your pitches to be assessed with ease by our GMA Regional Pitch Advisor, receiving a detailed report outlining how to better manage and maintain your pitches. More information around PitchPower can be found [here](#). It is important that PitchPower is utilised as this is essentially your gateway into being able to access funding from the Football Foundation in relation to ground maintenance

FOOTBALL FOUNDATION FUNDING

Grass Pitch Maintenance Fund (GPMF)

The GPMF is a £14m fund that provides eligible clubs and leagues with a tapered six-year grant to help them sustain pitches already at a 'good' level and enhance pitches that are either considered 'poor' or 'basic'. The fund is a key and part of the Football Foundation's and Grass Pitch Improvement Programme and an ambition to deliver 20,000 quality grass pitches by 2030. [Click here](#) to find out more about this fund.

Small Grants Scheme

This scheme is designed to offer small grants up to the value of £25k. Whether this is to replace goalposts, purchase pitch maintenance machinery, storage containers or fencing, the Small Grants Scheme is here to help. [Click here](#) for further guidance around this scheme.

Football Stadia Improvement Fund (FSIF)

These football grants are designed to improve stadium safety and enable clubs to satisfy the FA's ground grading requirements. The role the FSIF plays is vitally important as without funding many clubs would have been unable to achieve the necessary criteria. From installing new floodlights, upgrading playing surfaces and developing all-seater stands, the goal of the project is to improve the matchday experience for all. To find out more about this fund, please [click here](#).

HIVE Learning - Birmingham County Groundskeepers Group

Through the Football Foundation's online learning platform, we have created a group for Groundskeepers across the West Midlands to share best practice, post questions and network with other grass pitch enthusiasts. It is here where we will also share courses and workshop opportunities to further enhance your skills and knowledge around grassroots grass pitch maintenance. For more information and to join, [click here](#).

CLUB INNOVATION FUND

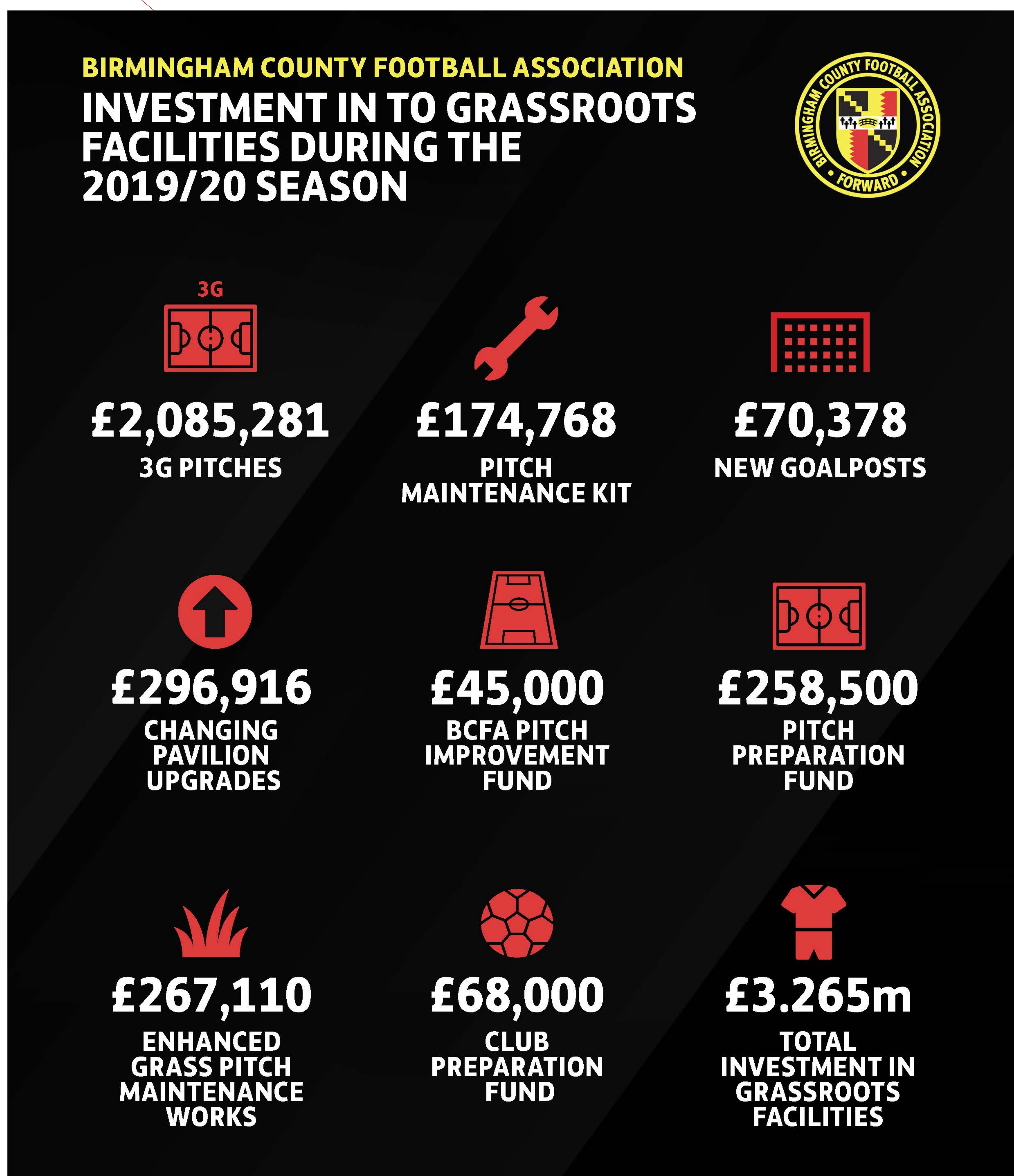
The Club Innovation Fund (CIF) has been established using association funding so clubs can positively impact their local communities. In turn, the CIF allows clubs to inform Birmingham County FA of their own innovative ideas and initiatives they would like to introduce to help move their club forward both on and off the pitch. More information will be available soon regarding the opening of the CIF for the 2021/22 season.

PITCH IMPROVEMENT PARTNERS

Lakeside Maintenance are our contractor services partner, providing a wealth of expertise and knowledge with regards to natural turf maintenance. Affiliated clubs can benefit from reduced rates on their services that have been identified within your PitchPower report. [Click here](#) for more.

Campey Turf Care are our machinery partner, providing affiliated clubs with discounts on maintenance kit and equipment that has been identified within your PitchPower report. [Click here](#) for more.

Rigby Taylor are our Pitch Improvement Consumables partner and supply grassroots football clubs across the region with grass seed, fertilizer, chemicals and line marking products and paints. [Click here](#) for more.



THE FA & MCDONALD'S GRASSROOTS FOOTBALL AWARDS

The FA & McDonald's Grassroots Football Awards recognise how grassroots leagues, clubs, volunteers and community projects play their part in making the nation's favourite game happen week in, week out up and down the country.

McDonald's has been a partner of the FA for 18 years. As the longest standing supporter of grassroots football in the UK, McDonald's continues to champion those selfless volunteers who enable everyone to play and enjoy grassroots football in a safe, fun and inclusive environment regardless of age, gender, race, religion or disability.

Every year, the awards receive thousands of nominations and are backed by leading football legends such as Casey Stoney, Sir Geoff Hurst, Ryan Giggs, Kenny Dalglish and Pat Jennings.

The 2021 Winners:

Rising Star of the Year: Liam Davies, Solihull Moors FC

Grounds Team of the Year: Holland Sports Club, Barton Rovers FC

Project of the Year: Sands United Solihull

Match Official of the Year: James Cox

League of the Year: Birmingham County Over 45's League

Coach of the Year Adult: Scott Langford, Kewford Eagles FC

Volunteer of the Year: Paul Cobb, Birmingham County Over 45's League & Solihull Moors FC

Coach of the Year Youth: Marcus Birch, Harbury Juniors FC

Club of the Year: Phoenix United FC

Spirit of Grassroots Football: Nick Sanders, Nightingale FC

Nominations capture the FA's 'For All' ethos and will be judged upon the FA's values of Progressive, Respectful, Inclusive, Determined and Excellent, or PRIDE for short.

Nominations for the McDonald's Grassroots Football Awards 2021/22 will open in the Spring, where further details will be released on our website on how you can nominate.



GRASSROOTS FOOTBALL AWARDS

MATCHDAY

In July 2018 the FA launched the new Matchday app to all affiliated football managers and players/parents of players that participate in leagues that use Full-Time and registered players via the Whole Game System for affiliated football.

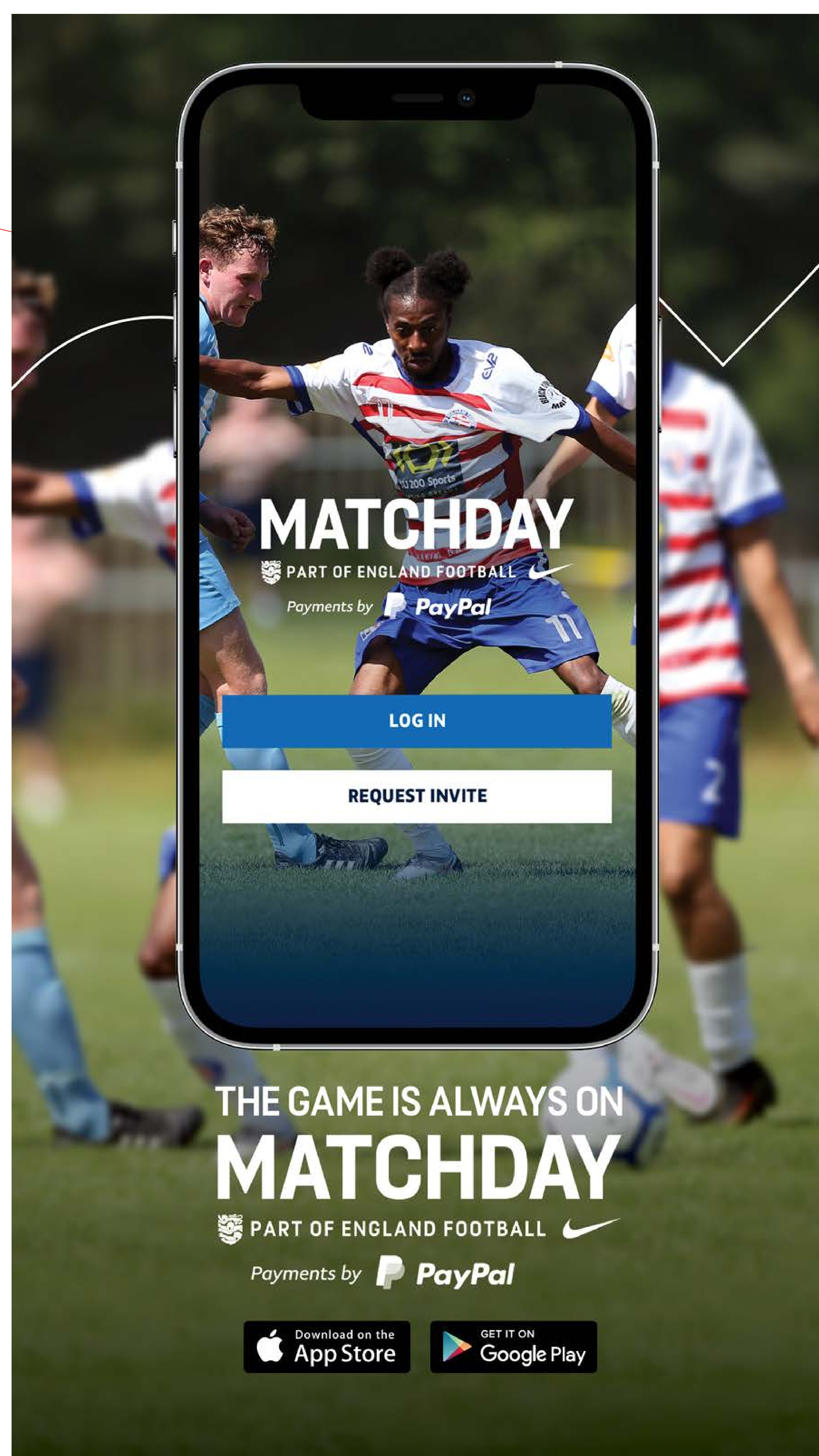
The first release of Matchday included a fantastic set of features that gave eligible managers and players a chance to organise training, games, player availability, whilst giving them the ability to pick squads and submit scores all through their smartphone.

In June 2019 the FA launched their partnership with Paypal and Matchday with a series of roadshows and competitions, including winning a “Matchday Masterclass” at St. George’s Park.

Everything you need to be Matchday ready

- Your league needs to be using our Whole Game System (WGS) to register players. This is because squad and disciplinary data is on the WGS. All this data will appear in your Matchday app, allowing managers to pick their squad for each game based on availability and eligibility.
- Your league needs to use our Full-Time service. This service drives fixture lists. Once your league enters fixtures in Full-Time, Matchday will automatically add them to the app. If your league doesn't use Full-Time, you won't be able to see your league fixtures in the app.
- As a club, you need to ensure all your team managers have a ‘manager’ role in the WGS. This could be team manager, assistant team manager, coach or assistant coach. They also need to have an email address in the WGS.

Click here to find out more about Matchday.



GENERAL DATA PROTECTION REGULATIONS (GDPR)

What is GDPR?

The rules that govern data protection have evolved and are now referred to as The General Data Protection Regulations (GDPR). As part of the FA's commitment to share knowledge and best practice, the following advice has been provided to help all leagues and clubs remain compliant.

Does GDPR apply to us?

GDPR applies to all data controllers and data processors, so if you collect any personal data in running your club (which you definitely will do if you have any members) then GDPR will apply to you. There are no exclusions for CASCs, charities or not for profit organisations. It doesn't make a difference for example if you are structured as an unincorporated organisation or company limited by guarantee – the requirements are concerned with the data you hold and how you handle this.

What is Personal Data?

Any information relating to an identified or identifiable data subject who can be identified, directly or indirectly, in particular reference to an identifier such as a name, an identification number, location data, online identifier or to one or more factors specific to the physical, physiological, genetic, mental, economic, cultural or social identity of that person. Examples include: name, address, telephone number, IP address, membership numbers etc.

What if we choose not to use FA Systems?

The FA will not be undertaking any review or compliance activities in respect of non-FA systems. In addition, The FA will not be undertaking compliance activities in respect of leagues' use of data on FA systems for their independent purposes or, to the extent that it falls under the provisions of the regulation, personal data processed by leagues in hard copy forms.

Any non-FA systems or applications which leagues use to collect personal data or processing which is carried out by leagues for independent purposes will need to be reviewed and updated (as necessary) by each league. Each league will need to consider if it needs to update its notices to participants, create internal data protection procedures or spend time considering its information security procedures.

Where Can I Find Further Information?

The Information Commissioner's Office (ICO) has also produced guidance for all UK businesses on GDPR. You can find this document on its website: [**The ICO Guide to GDPR**](#)

In addition please see below links to example documentation that has been verified by the FA's legal team as meeting the statutory compliance level:

[**Data Protection Policy for Leagues & Clubs**](#)

[**Privacy Notice Clubs**](#)

[**Privacy Notice Leagues**](#)

SUSTAINABLE FOOTBALL

SAVE TODAY, PLAY TOMORROW

Birmingham County FA is committed to pioneering the way in which football minimises the impact of its activities on the environment. The Save Today, Play Tomorrow Programme is the first project of its kind for a County FA, offering access to services, education and fundamental resources that support clubs, leagues and teams to make simple, practical changes to help positively benefit themselves and their local community.



The programme consists of four workstreams where, with the support of local and national partners, we believe we can make the greatest impact.



We will create an environment where the Health (Physical and Mental) and Wellbeing of all participants and volunteers is at the heart of what we do.



We will develop educational resources on the environmental challenges specific to football to help make informed decisions around reducing the environmental footprint, particularly on waste, energy and plastic.



We will responsibly support all clubs and leagues with innovative ideas that reduce, re-use and recycle.



We will lead on educating leagues, clubs and facility operators to consider the use of their green spaces, creating protected areas that can reconnect communities with natural habitats.

Birmingham County FA are pleased to have included the first ever sustainability pledge in this seasons affiliation. If you are yet to sign the pledge and want to commit to creating a low carbon, greener game, then **get in touch by emailing SaveTodayPlayTomorrow@BirminghamFA.com**.

NEWSLETTER

Receive the latest sustainability news directly to your inbox by signing up to the Save Today, Play Tomorrow supporters club [here](#).

SOCIAL MEDIA

Follow our new #SaveTodayPlayTomorrow social channels to stay up to date with the latest information.



@savetodayplaytomorrow



@savetodayplaytomorrow



Birmingham County FA



@STPT2021



SUSTAINABLE FOOTBALL

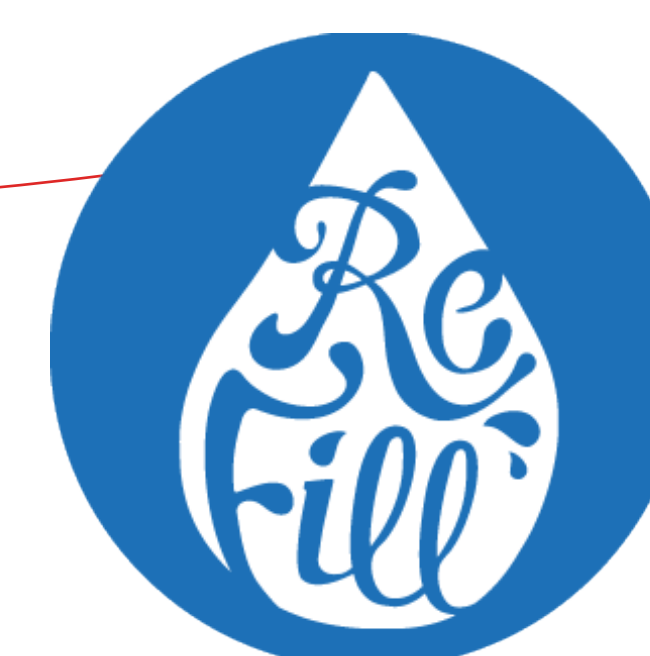
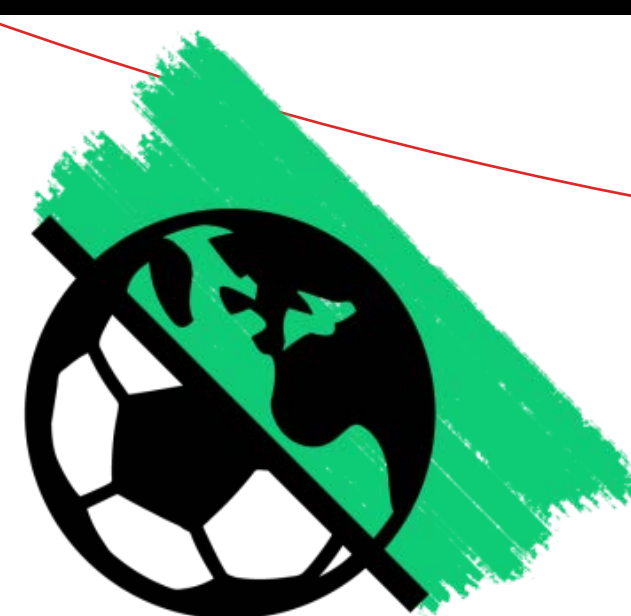
SAVE TODAY, PLAY TOMORROW

In February 2021, Birmingham County FA was accepted as signatories of the UN's Sport for Climate Action Framework, joining some of the most recognisable sporting establishments from across the globe in supporting the five key principles that will help reduce the carbon footprint in the game.



SUSTAINABLE PARTNERS

We are pleased to have partnered with various organisations which will help us to achieve our ambitious goal of creating a low carbon, greener game. You can find out more by clicking on the logo's below;



UNIVERSITY OF
BIRMINGHAM



GREEN INNOVATION FUND

As part of Birmingham County FA's commitment to creating a low carbon, greener game we are giving clubs the opportunity to apply for grant funding up to the value of £750 to help support innovative, environmentally positive sustainability projects at a grassroots level.

The first step is to submit your application [here](#).
The portal will close at midnight on 30th September 2021.

The types of projects that will be supported include;

- | | |
|---------------------------------|--------------------------------|
| Mental Health Training | Cycle Racks |
| Drinking Water Stations | Rain Water Harvesters |
| LED Lights | Recycling Bins |
| Electric Vehicle Charge Points | Solar Panels |
| Carbon Literacy Training | Low Flush Water Saving Toilets |
| BPA Free Reusable Water Bottles | Rewilding Projects |

BIRMINGHAM COUNTY FA PARTNERS

discountfootballkits.com
the UK's leading teamwear specialist

VESEY™

 **CLUBWEBSHOP.COM**
UNIQUE - SIMPLE - SPECIALIST - SERVICE

Discount Football Kits are our official Retail Partner alongside Nike. All parties in the partnership actively work together to benefit the Association's member leagues and clubs as much as possible.

**KOOL
PAK**®

Koolpak has teamed up with Birmingham County FA to offer you special discounted prices for their best-selling First Aid essentials so that you are prepared for when you need to treat an injured player.

 **easyfundraising**
feel good shopping

We have teamed up with easyfundraising to give our members a great new way to raise funds simply by shopping online! Register your club, league, or team and get free donations from retailers every time you, your players, family, and supporters shop through easyfundraising online.

 **REPLAY.**
REVOLUTIONISING MAINTENANCE

Replay Maintenance is the UK's market leader in maintaining synthetic sports surfaces. Through our partnership with Replay Maintenance all facilities within Birmingham have access to a fluid 'pool' of information and advice with an expert on hand at the time they are required. From initial grounds professional training through to budgets and forecasts, the partnership caters for all aspects of managing and maintaining a synthetic sports pitch.

 **Get
Grants**
GetGrants.org.uk

Get Grants provide practical support in the form of training, information and advice that fundraisers with all levels of experience can take away and put into practice. Whether you are a sports club, charity, community group or school, Get Grants can help you increase your grant fundraising success.

**IMPROVING LIVES BY IMPROVING FOOTBALL
IN THE HEART OF ENGLAND**



BIRMINGHAM COUNTY FA
RAY HALL LANE, B43 6JF

Follow our social channels to stay up to date with the latest information

 **@BirminghamCFA**

 **@Birmingham_FA**

 **Birmingham County FA**

 **@BirminghamFA**