

Hampshire FA



HAMPSHIRE FA
CUP
FINALS
2019
£1

**WOMENS INTERMEDIATE HAMPSHIRE FA
COUNTY CUP FINAL**

GOSPORT FALCONS vs. HAWLEY

**SPONSORED BY HAMPSHIRE COUNTY
WOMENS LEAGUE**

SUNDAY 17TH MARCH 2019

AT ALTON FC

KICK OFF 14:30pm



Savvy are proud sponsors of
Hampshire FA youth cup finals



Accountancy and Tax Compliance
Cloud Accounting & Bookkeeping
Payroll, Auto Enrolment & CIS
System Implementation
Business Growth
Strategic Planning
Company Formations & Legal Structures
Business Start Up Services

A Savvy business is always prepared.

Compliance

| Performance

| Strategic

Savvy

accountancy solutions

www.savvyaccountancy.co.uk

call 01252 447715

think@savvyaccountancy.co.uk

**HAMPSHIRE FA
CUP COMMITTEE 2018/19**

**PRESIDENT
JOHN BENFIELD**

**CHAIRMAN
JAMES PEARSON**

**DEPUTY CHAIRMAN
IAN WALKOM**

**FINANCE DIRECTOR
STEVE YEOMANS**

**CHIEF EXECUTIVE
NEIL CASSAR**

**COMMITTEE CHAIRMAN
MICK DAVIS**

**COMMITTEE DEPUTY
CHAIRMAN
STEVE YEOMANS**

**COMMITTEE MEMBERS
VANESSA RAYNBIRD
PAUL SCOBLE
JOHN CARTER
MARTIN OLIVER
JOHN MOODY
ERIC TRENGOVE
TONY ROCK
CLIVE SOUTH
MANDY FORBES
MARTIN PRESCOTT**

**OPERATIONS MANAGER
DARREN PARKER**

**COMMUNITY MANAGER
GARY PRATT
@HAMPSHIREFA_SFA**

**REFEREES APPOINTMENT
SECRETARY
BRIAN LE BRETON**

**PROGRAMME EDITOR
LEWIS WELLS**



HAMPSHIRE FA



@HAMPSHIREFA



@HAMPSHIRE_FA



WWW.HAMPSHIREFA.COM

HAMPSHIRE FA CUP FINALS

ON BEHALF OF THE DIRECTORS & COUNCIL OF HAMPSHIRE FA MAY I WELCOME YOU ALL TO ALTON FC, FOR THE FINAL OF THE HAMPSHIRE FA WOMENS INTERMEDIATE CUP .

IT IS WITH GREAT PLEASURE THAT WE EXTEND A WARM WELCOME TO THE PLAYERS, OFFICIALS AND SUPPORTERS OF ALL OF TODAY'S TEAMS GOSPORT FALCONS AND HAWLEY, AND ALSO TO TODAY'S MATCH OFFICIALS. WE WISH YOU ALL AN ENJOYABLE DAY.

SPECIAL THANKS ARE ALSO EXTENDED TO HAMPSHIRE COUNTY WOMENS LEAGUE TODAY'S COMPETITION SPONSOR. THE CUP COMMITTEE IS PLEASED TO ANNOUNCE THAT KITS & PIECES ARE TODAY'S MATCH BALL SPONSORS.

THANK YOU FOR YOUR SUPPORT TODAY. I HOPE YOU ENJOY THE GAME AND WILL OBSERVE THE FA "RESPECT" PROGRAM. HAVE A SAFE JOURNEY HOME.

BEST WISHES

JAMES PEARSON
CHAIRMAN, HAMPSHIRE FA



**WOMEN INTERMEDIATE CUP
PREVIOUS WINNERS:**

2007 - BASINGSTOKE TOWN LADIES
2008 - WIDBROOK UNITED LADIES
2009 - SHANKLIN LADIES RESERVES
2010 - PORTSMOUTH UNIVERSITY
2011 - ANDOVER NEW STREET
2012 - FLEETLANDS
2013 - AFC PORTSMOUTH LADIES
2014 - TEAM SOLENT
2015 - WARSASH WASPS SPORTS & FOOTBALL CLUB
2016 - GOSPORT BOROUGH
2017 - GOSPORT BOROUGH
2018 - BASINGSTOKE TOWN LADIES RESERVES

The Best Legal Team to Have on Your Side!



No matter what life throws at you,
the specialist team have the experience
and expertise to be able to help.



Proud supporters of
Hampshire Football Association

Family Law

Wills & Probate

Commercial

Conveyancing



Verwood

Christchurch

Broadstone

Wimborne

01202 823308

01202 482202

01202 692448

01202 881454

enquiries@hgwalker.co.uk | www.hgwalker.co.uk



FLEET LINE MARKERS LTD
THE NO.1 FOR SPORT SURFACE PAINTS
& MACHINES IN THE WORLD



www.flmuk.com

DOUBLETREE BY HILTON SOUTHAMPTON
FORMERLY HILTON SOUTHAMPTON



Situated only minutes away from both the M3 and M27 yet set in peaceful wooded gardens, the Doubletree by Hilton Southampton offers spacious accommodation and outstanding meeting facilities

NOW PROUD PARTNERS WITH THE HAMPSHIRE FA WITH DISCOUNTS AVAILABLE FOR ALL MEMBERS

Bracken Place, Chilworth, Southampton, SO16 3RB
023 8070 2700





Experience
the difference

Keeping you at the top of your game

Goals are what makes the difference between a static business and a growing one. As one of the largest independent accountancy practices in the region, we are renowned as quality business advisers with a commercial, strategic edge.

Our aim is to become an objective, specialist addition to your team delivering intelligent, proactive, commercial solutions to add value to your business.

Working across the corporate, SME and not-for-profit sectors, we specialise in industry-leading accounting and taxation advice across company and personal tax planning, corporate finance, payroll, human resources, IT, auditing and strategic development.

We're business people first and foremost. That makes us passionate about our business...and most importantly passionate about yours.

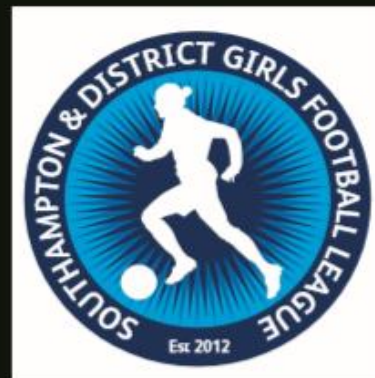
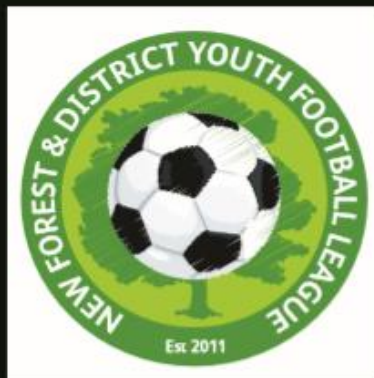


Chartered Accountants
Business & Tax Advisers

T 023 8045 1300
E enquiries@hwb-accountants.com
W www.hwb-accountants.com
Lighters House, Mayflower Close,
Chandlers Ford, Basingstoke, SO23 4AR

£25 OFF LOGO DESIGN

PLEASE QUOTE HAMPSHIRE FA COMMERCIAL PARTNER BOOKLET



GRAPHIC DESIGN • CARTOONS • ILLUSTRATION

Ceratopia

SIMON@CERATOPIA.CO.UK • 023 8178 7052

WWW.CERATOPIA.CO.UK

BSA REGAL

engineering

Multi-Axis CNC Machining

Cad-Cam Capabillity

Precision engineering

Prototype or batch work



Tel 023 80 366407 www.bsa-regal.co.uk

KOOL PAK[®]

Quality Products that make Koolpak the professionals' choice

Prices **REDUCED** for the 2018/19 Season

Special Offer

5% discount for orders of 10 or more First Aid Kits

Is your First Aid Kit fully stocked for the new season?

Koolpak has teamed up with your County FA to offer you special discounted prices for our best-selling First Aid essentials so that you are prepared for when you need to treat an injured player.



Koolkids Instant Ice Pack
- As low as 41p each



Defibrillator - £1,026.30



Original Instant Ice Pack
- As low as 59p each




Ice Bag - £3.80



Team First Aid Kit - £21.80



Click on the link to the Koolpak Web Portal in the Partnership section on your County FA website to purchase



Quick, easy and convenient online training courses.

When you need to gain an accredited certificate, there is no easier way to learn.

Our range of over 100 online training courses starts from just £15 & includes:


- Food Hygiene
- Health & Safety
- Mental Health Awareness



Certificate Posted 1st Class The Day After Completion - No Time Limits - No Charge To Retake Assessment

VISIT: www.highspeedtraining.co.uk/hampshirefa
to view our full range of courses.

0333 043 3437
support@highspeedtraining.co.uk



Quick, easy and convenient online training courses.

When you need to gain an accredited certificate, there is no easier way to learn.

Our range of over 100 online training courses starts from just £15 & includes:

- Food Hygiene
- Health & Safety
- Mental Health Awareness



Certificate Posted 1st Class The Day After Completion - No Time Limits - No Charge To Retake Assessment

VISIT: www.highspeedtraining.co.uk/hampshirefa
to view our full range of courses.

0333 043 3437
support@highspeedtraining.co.uk

pitch side hoarding panels

Printed full colour, weatherproof, durable, cost effective.

2m x 1m £165.00 3m x 1m £225.00*

OWN DECORATING LTD

WE CAN DO IT ALL

01252 616149

www.owndecorating.co.uk

01252 616149

BOSS

THE BOSS GROUP

01252 616149

HART TAXIS

01252 616149

outdoor Flexible PVC banners

Printed full colour, with eyelets and rolled in a tube.
Supplied with cable ties.

2m x 0.75m £49.00 2.5m x 1m £75.00
3m x 1m £125.00*

BSA REGAL

BSA REGAL

MAIN SPONSOR

We can help with
artwork, installation
and more. Get in touch!

*These prices are after discount of 25%
for Hampshire FA members, patrons
and clubs. Prices exclude VAT & delivery.

**splash
display**



Splash Display Ltd
Unit 12-14 Martimores Ind Est,
Ramsay Rd, Dover, Ramsay,
Hampshire SO51 6RF

023 8235 1580
info@splashdisplay.com
splashdisplay.com

ALL YOUR
OFFICE
NEEDS

a&a
BusinessSupplies

Need new office furniture? Running low on office supplies?

When selecting your office requirements, from paper and paperclips to desks and chairs, choose a provider of quality products with service direct to your desk.

Our prices are guaranteed not to be beaten!



0800 376 9618

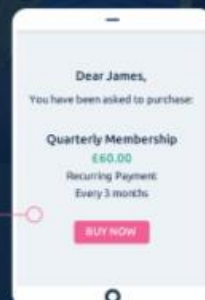
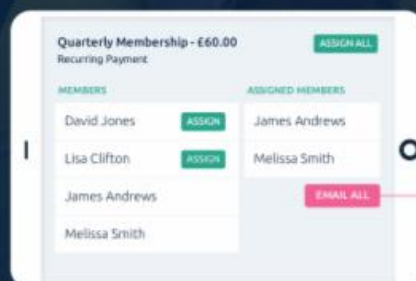
www.aa-business.co.uk www.aa-furniture.co.uk



Unit 21, City Industrial Park, Southern Road, Southampton, Hampshire, SO15 1HG

Create a **beautiful** website
for your Football club today. . .

NEW
Collect club
payments
online!



MyClubPro™

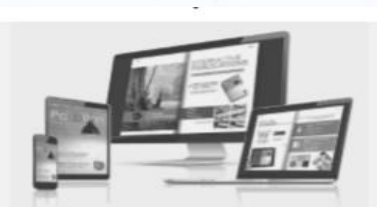
www.myclubpro.co.uk



Pappillon
Apps for Business



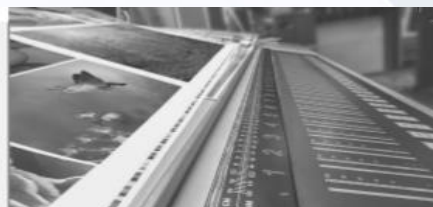
Apps for Business allows existing and prospective customers to connect to your business for info and services.



Pappillon
Digital Publications



Digital publications with interactive rich media features are highly effective and a cost efficient way to market your products and services.



Pappillon
Design & Print



Using the very latest print technologies combined with peerless customer service and pricing to match.

Pappillon Media Limited, High Street, Fairford GL7 4AF

01285 712487 | 07713 468326 | tony.warrington@pappillon.co.uk |

www.pappillon.co.uk

WHERE CAN WE TAKE YOU?

Fly to more than 35 destinations

City breaks
Summer holidays
Skiing destinations
Worldwide connections



Breeze through... your easy, fast and friendly airport
southamptonairport.com  

SOU
Southampton
Airport

myClubinsurance



For amateur and semi-professional sports clubs

To make sure you are appropriately covered, our myClubinsurance policy can be built around your particular needs. Whether you require stand-alone liability cover or full buildings and contents protection, the policy can be adapted to suit.



LIABILITIES



BUILDINGS
AND STADIA



CONTENTS



BUSINESS
INTERRUPTION



FIXED
FLOODLIGHTS



SCOREBOARDS
AND SIGHTSCREENS



FIXED
GOALS/POSTS



PLAYING SURFACES
(NATURAL / ARTIFICIAL)

BluefinSport 0345 872 5060

myclub@bluefinsport.co.uk
bluefinsport.co.uk/myclub

Reach your goal with **MediaCAT Digital Signage**



Future Events

News & Weather

Team Information

Match Statistics

Emergency Alerts

Food & Beverage

Navaho's MediaCAT is one of the most advanced network signage systems available. With it's easy to use interface MediaCAT can create eye-catching displays for any business, large or small.

Please call **02380 000011** for more information.

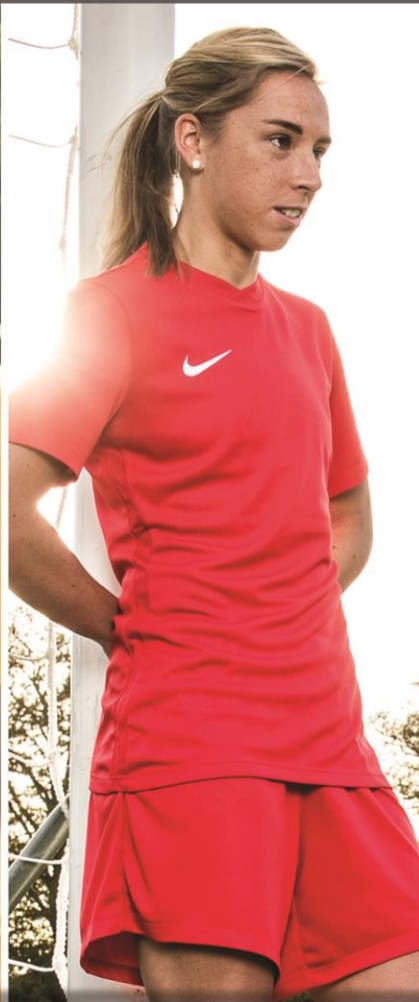
For more information on NAVAHO Digital Signage solutions please visit www.navaho.tv



"Distributing a truly marvellous digital signage solution."

NAVAHO
information display system | Digital Signage

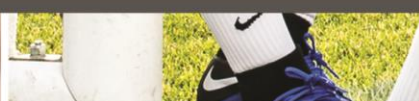
GRASSROOTS MEETS GREATNESS



OFFICIAL NIKE RETAIL PARTNER



discountfootballkits.com
the UK's leading teamwear specialist



MEET THE TEAMS

GOSPORT FALCONS



1. EMMA ANDERSON GK

EMMA IS THE FOUNDING MEMBER OF THE TEAM AND PREVIOUSLY HAS PLAYED AS A DEFENDER. SHE HAS BEEN SOLID THIS YEAR IN GOAL MAKING KEY SAVES REGULARLY TO HELP WIN GAMES.



21. LAUREN HARDING RB/RM

LAUREN IS A VERY COMBATIVE PLAYER WHO IS ABLE TO WIN THE BALL BACK OFTEN FOR THE TEAM. HER LONG THROWS ARE A WEAPON IN ATTACK AND HER EFFORT ON THE PITCH IS ALWAYS HIGH. SHE HAS GREAT QUALITY WHEN PASSING OVER LONGER DISTANCES.



20. AMY MCALLISTER CB

AMY IS A ROCK AT THE BACK AND IS AN INTEGRAL PART OF THE TEAM. HER DEFENSIVE ABILITY IS SUPERB, AND SHE IS ALSO AN ATTACKING THREAT FROM CORNERS.



16. BETSY WAKEFIELD LB/CB

BETSY CONTINUES TO IMPROVE WITH HER TECHNICAL QUALITY AND IS A GOOD PASSER OF THE BALL WHO IS STRONG IN DEFENCE AND ALSO GOOD MOVING FORWARDS WITH THE BALL. HER PASSION AND DETERMINATION DRIVE THE TEAM FORWARDS.



9. LAUREN BORJINI RM/LM

LAUREN IS A TOUGH SKILFUL PLAYER WHO IS CAPABLE OF LINKING UP WITH OTHERS AS WELL AS PRODUCING GOALS AND ASSISTS. SHE IS A LEADER ON THE PITCH AND WILL ALWAYS BE BATTLING FAIRLY TO HELP THE TEAM.



10. CHARLIE SCOTT CM

CHARLIE IS AN EXCELLENT LEADER AND CONTROLS THE MIDFIELD WITH HER PASSING RANGE AND PHYSICAL PRESENCE. SHE IS AN EXAMPLE TO YOUNG GIRLS OF HOW TO BE A LEADER AND CONTROL A MIDFIELD.



6. CHELSEA OSBORNE CM/ST

CHELSEA IS ANOTHER FINE PLAYER WITHIN THE SQUAD. HER ABILITY TO TRAVEL WITH THE BALL AND HER GOALS HAVE BEEN VITAL TO THE TEAMS PROGRESS THIS SEASON. SHE MAY BE SMALL BUT SHE WILL COMPETE FOR EVERY BALL AND OFTEN WIN.



14. JAZ HUNTINGTON LM/RM

JAZ HAS THE ABILITY TO PROVIDE GOALS AND ASSISTS TO THE TEAM. SHE IS CAPABLE DRIBBLING PAST PLAYERS, LINKING WITH HER PASSING AND SCORING GOALS FROM DIFFERENT AREAS OF THE PITCH.



13. SHANNEN WOODS LM/RM/ST

SHANNEN IS VERY QUICK AND HAS AN EYE FOR GOAL. SHE HAS SCORED OVER 20 GOALS ALREADY THIS SEASON, DESPITE MISSING SEVERAL GAMES DUE TO INJURY. THERE IS PLENTY OF TIME FOR HER TO ADD MORE OVER THE REMAINING GAMES.

MEET THE TEAMS

GOSPORT FALCONS



7. ELLIE HARTY CM/CAM/ST

ELLIE SCORED A MAGNIFICENT FREE KICK DURING OUR SEMI-FINAL COMEBACK AGAINST AFC STONEHAM AND WAS A DRIVING FORCE IN BOTH OF THE SEMI-FINALS.



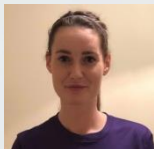
1. AMELIA DARCY LB/RB/LM/RM

AMELIA IS IN HER FIRST SEASON OF OPEN AGE FOOTBALL AND HAS DEVELOPED INTO A STRONG AND COMBATIVE PLAYER. SHE HAS IMPROVED SO MUCH OVER THE SEASON AND IS A CREDIT TO THE TEAM.



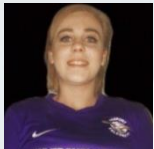
13. SOPHIE CARPENTER

ANOTHER PLAYER IN HER FIRST SEASON OF OPEN AGE FOOTBALL, SOPHIE HAS CONTRIBUTED WITH CRUCIAL GOALS IN GAMES AND HAS SHOWN SUPERB IMPROVEMENT OVER THE SEASON SO FAR.



8. HOLLIE TOBIN CM/ST

HOLLIE IS A VERY GOOD TECHNICAL PLAYER WHO CAN CONTRIBUTE GOALS AND ASSISTS. HER MOMENT OF THE SEASON SO FAR IS A GOAL FROM THE HALF WAY LINE. HER QUALITY IN 1V1 SITUATIONS IS KEY TO THE WAY WE PLAY.



5. SHELLY ROSAM RM/LM/ST

SHELLY IS IN HER FIRST YEAR OF WOMEN'S FOOTBALL AND HAS SHOWN EXCELLENT DETERMINATION AND VAST IMPROVEMENT TO ALL ASPECTS OF HER GAME. SHE SCORED A VITAL EQUALISER IN A LEAGUE GAME EARLY IN THE SEASON AS WELL AS BEING A THREAT WITH HER PACE AND HARD WORK.



22. DEVIN WAKEFIELD LB/RB

DEVIN HAS JOINED HER YOUNGER SISTER BETSY IN THE TEAM AND HAS DEMONSTRATED THAT BETSY'S TALENT HAS BEEN PASSED ON BY DEVIN. HER DEFENSIVE QUALITIES, CALMNESS ON THE BALL AND PASSING ABILITY HAVE BEEN IMPORTANT FOR THE TEAM.



SPECIAL MENTION: TASH STALLARD

TASH WAS OUR FORMER GOALKEEPER WHO UNFORTUNATELY HAD TO GIVE UP PLAYING DUE TO A HIP PROBLEM. SHE WAS AND STILL IS VITAL TO THE TEAM, WITH HER PRESENCE AND MOTIVATIONAL MESSAGES FOR HER TEAMMATES. SHE CONTINUES TO BE INVOLVED WHERE POSSIBLE AS GK COACH AND ON MATCHDAYS.



GET INTO COACHING

**SCAN THE QR CODE TO SEE ALL OF THE
AVAILABLE HAMPSHIRE FA COURSES**



APPLE DEVICES OPEN CAMERA, SCAN QR CODE, ACCEPT THE NOTIFICATION



ANDROID DEVICES OPEN SAMSUNG INTERNET APP, CLICK THE THREE DOTS (⋮)
AT THE TOP RIGHT OF THE SCREEN IN THE INTERNET APP,
SELECT SCAN QR CODE



HUAWEI DEVICES TAKE A PHOTO OF THE QR CODE, OPEN GALLERY, SELECT
PICTURE, CLICK 'MORE', CHOOSE 'OPEN QR CODE'



HAMPSHIRE FA



@HAMPSHIREFA



THE JOURNEY SO FAR

GROUP A

AFC
BEDHAMPTON
VILLAGE **9pts**

AFC
PETERSFIELD
LADIES **6pts**

COWES LADIES **1pt**

PORTSMOUTH
UNIVERSITY
LADIES **1pt**

GROUP B

HAWLEY LADIES **6pts**

FLEET TOWN **3pts**

RUSHMOOR
COMMUNITY
DEVELOPMENT **0pts**

GROUP C

AFC STONEHAM
LADIES **6pts**

FORDINGBRIDGE
TURKS LADIES **3pts**

NEW MILTON
TOWN LADIES
RESERVES **0pts**

GROUP D

GOSPORT
FALCONS WOMEN **6pts**

WIDBROOK
UNITED
RESERVES
WOMEN **3pts**

WINCHESTER
CITY FLYERS A
WOMEN **0pts**

FINAL

GOSPORT FALCONS LADIES

VS

HAWLEY LADIES

2 - 1

S'FINAL

HAWLEY LADIES

VS

BEDHAMPTON
VILLAGE LADIES

4 - 3

S'FINAL

GOSPORT FALCONS
LADIES

VS

AFC STONEHAM LADIES

MEET THE TEAMS

HAWLEY

HAWLEY TEAM INFO:

HAWLEY LADIES IS IN ITS FIRST SEASON TOGETHER AND IS DELIGHTED TO BE A PART OF THE HAMPSHIRE INTERMEDIATE CUP. THE TEAM WAS FORMED IN THE SUMMER 2018 AND HAS GONE FROM STRENGTH TO STRENGTH. AFFILIATING WITH AN EXPERIENCED YOUTH CLUB, HAWLEY FC HAS ALLOWED US TO FEEL SUPPORTED AND GIVEN US ACCESS TO THE GREAT COMMUNITY FEEL WHICH THE CLUB HAS. THE CLUB HAVE BEEN FANTASTIC IN HELPING US GET ORGANISED WITH TRAINING, PITCHES AND SPONSORSHIP AND BUILDING THE KEY FOUNDATIONS TO ALLOW US TO FLOURISH AS A SIDE.

THE ROAD TO THE CUP FINAL HAS BEEN A GREAT EXPERIENCE AND WE ARE DELIGHTED TO HAVE MADE IT THIS FAR HAVING PLAYED SOME VERY RESPECTABLE OPPOSITION IN EARLIER ROUNDS. I WOULD LIKE TO THANK THE PLAYERS FOR GIVING THEIR TIME AND COMMITMENT TO THE TEAM, THEIR PERFORMANCES ON THE PITCH, THE LOYAL FANS THAT HAVE STARTED TO FOLLOW US AND TO THE HAMPSHIRE FA FOR ORGANISING THE CUP.

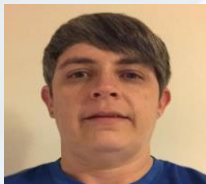
JONATHAN HOOPER, MANAGER.



NAME: CHRISTINA BINYON

POSITION: GK

MANAGER'S COMMENT: "CHRISTINA HAS BEEN AN ABSOLUTE ASSET THIS SEASON AND HAS GROWN IN CONFIDENCE WEEK BY WEEK. AN OUTSTANDING SHOT STOPPER AND A DEVELOPING YOUNG LEADER WITH A BRIGHT FUTURE."



NAME: SALLY WHITE-HALL

POSITION: CM

MANAGER'S COMMENT: "THE STALWART OF MIDFIELD, SALLY HAS SHOWN FANTASTIC LEADERSHIP ON AND OFF THE PITCH IN OUR FIRST SEASON TOGETHER. HER PERFORMANCES HAVE BEEN DEPENDABLE AND CONSISTENT, A CALM HEAD IN THE MIDDLE OF THE PITCH WITH REAL QUALITY FROM SET PIECES."



NAME: SOPHIE HOLLIS

POSITION: WINGER

MANAGER'S COMMENT: "BLESSED WITH FANTASTIC TECHNICAL ABILITY AND FANTASTIC DELIVERY FROM THE LEAGUE, SOPHIE HAS A REAL LOVE FOR THE GAME. THE ABILITY TO BEAT A PLAYER AND PUT THE BALL IN DANGEROUS AREAS ARE SOPHIE'S SPECIALITY."



NAME: SHELLIE IRVINE

POSITION: STRIKER

MANAGER'S COMMENT: "SHELLIE IS IN OUTSTANDING FORM THIS SEASON BAGGING 32 GOALS IN 14 GAMES, POWER, PACE AND A THUNDEROUS STRIKE SHE REALLY IS A COMPLETE CENTRE FORWARD."



NAME: JORDAN REID

POSITION: CM

MANAGER'S COMMENT: "A BALANCED, TWO FOOTED PLAYER WITH CREATIVITY AND VISION IN ABUNDANCE. JORDAN HAS DEVELOPED UNDER HER NEW ROLE IN CENTRAL MIDFIELD, CONTROLLING THE TEMPO OF A GAME AND THINKING FORWARD WITH POSSESSION."

MEET THE TEAMS

HAWLEY



NAME: SHANNON MATHER (CAPTAIN)

POSITION: RM

MANAGER'S COMMENT: "CAPTAIN FANTASTIC. SHANNON PUTS EVERYTHING INTO EACH GAME AND HER PERFORMANCE IS INSPIRING TO THOSE AROUND HER. RELENTLESS OFF THE BALL SHANNON LEADS THROUGH EXAMPLE, CONTINUING TO WORK UNTIL THE FINAL WHISTLE. SHANNON'S DETERMINATION WAS BEST EXEMPLIFIED BY HER GOAL TO SEND THE HAWLEY LADIES TO THE CUP FINAL HAVING SPRINTED HALF THE PITCH TO SCORE AT FULL STRETCH AT THE BACK POST."



NAME: LOIS SWANTON

POSITION: LM

MANAGER'S COMMENT: "LOIS IS STRONG, FEARLESS AND GREAT IN THE AIR. ALWAYS CAUSING TROUBLE DOWN THE LEFT SIDE OF MIDFIELD LOIS WORKS HARD TO SUPPORT THE ATTACK WHILST COVERING HER DEFENSIVE DUTIES."



NAME: ERIN WETHERILL

POSITION: LB

MANAGER'S COMMENT: "CONFIDENT IN ATTACK, ERIN HAS THE ENERGY TO GET UP AND DOWN THE PITCH, ALWAYS AN OPTION MOVING FORWARDS ERIN LIKES TO PRESS HIGH AND CREATE ATTACKING OPPORTUNITIES."



NAME: JESS LOOMES

POSITION: ST

MANAGER'S COMMENT: "HAVING PLAYED ON THE WING FOR A FEW SEASONS JESS IS ENJOYING BEING BACK AMONGST THE GOALS AS A STRIKER. TECHNICALLY GIFTED AND BALANCES JESS HAS THE ABILITY TO HIT THE BALL WITH BOTH FEET AND A FANTASTIC RANGE OF PASSING."



NAME: GEMMA TURNER

POSITION: CB

MANAGER'S COMMENT: "AN OUTSTANDING LEADER WHO IS AN EXCELLENT READER OF THE GAME. GEMMA IS NOT SHY OF A TACKLE AND A REAL ORGANISER FOR THE DEFENCE HER COMMANDING PRESENCE HAS LED TO A MASSIVELY IMPROVED STRUCTURE TO THE SQUAD, YOU'LL HEAR HER BEFORE YOU SEE HER."



NAME: KIM HARDING

POSITION: LB

MANAGER'S COMMENT: "KIM PLAYED A CRUCIAL ROLE IN THE SEMI-FINAL, MAKING A LAST MINUTE CLEARANCE OFF THE LINE. COMMITTED AND BRAVE ARE TWO ASSETS WHICH ARE ALWAYS DISPLAYED WHENEVER KIM IS ASKED TO FULFIL ANY TASK."

MEET THE TEAMS

HAWLEY



NAME: ERIN CLEGG

POSITION: CM

MANAGER'S COMMENT: "HAVING MISSED HALF OF THE SEASON DUE TO INJURY IT IS FANTASTIC TO HAVE ERIN BACK IN THE SIDE. A REAL NATURAL IN CENTRE MID, ERIN IS STRONG AND WITH GREAT TECHNIQUE. A COMPLETE MIDFIELDER."



NAME: GRACE PILLING

POSITION: CB

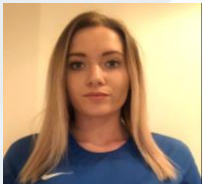
MANAGER'S COMMENT: "GRACE IS A QUICK, STRONG, INTELLIGENT CENTRE BACK WHO HAS REALLY MASTERED HER CRAFT. WELL BALANCED AND ABLE TO USE BOTH FEET GRACE INSTILS CALM ACROSS THE BACK AND CAN STEP FORWARD WITH THE BALL COMFORTABLY."



NAME: LAURA NOBLE

POSITION: RB

MANAGER'S COMMENT: "LAURA IS HAVING A REALLY GREAT SEASON AND IS PROGRESSING SO MUCH AS A PLAYER. CONFIDENT AT EITHER FULLBACK POSITION, LAURA WORKS WELL WITH CENTRE BACK PAIRINGS, COVERING WHEN REQUIRED AND DEMONSTRATING GOOD DECISION MAKING."



NAME: GEORGIA STALLEY

POSITION: CB

MANAGER'S COMMENT: "CURRENTLY PLAYING AT CENTRE BACK, GEORGIA IS THE ONLY PLAYER WHO HAS PLAYED EVERY POSITION ON THE PITCH THIS SEASON. THIS IS TESTAMENT TO HER VERSATILITY AS A PLAYER AND HER ATHLETICISM, STRENGTH AND TECHNICAL ABILITY. GEORGIA READS THE GAME WELL AND HAS GREAT MOBILITY AND PACE WHEN PLAYING FURTHER UP THE PITCH."



HOBBS

ESTABLISHED 1884

Hobbs the Printers
proud to print
Hampshire FA publications

Contact us for a Hampshire FA affiliate special price for your club's:
Handbooks/Newsletters/ Bulletins/Magazines/Publications

T: 023 8066 4800

E: estimating@hobbs.uk.com

W: www.hobbs.uk.com



Child Trophies Ltd

*The Premiership
for Trophies, Medals
& Engraving*

Call now for your FREE 2019 Brochure Pack or simply
browse our 3 virtual brochures online @ childtrophies.co.uk

FREE ENGRAVING

FREE COLOUR LOGO

FREE DELIVERY OPTIONS

01202 715600

*As Hampshire FA's proud supplier
we can offer*

20% Club Discount

Unit 8 Alder Hills Industrial Estate, 16 Alder Hills BH12 4AR
email: childtrophies@aol.com www.childtrophies.co.uk



'EASILY THE
STANDOUT MUSICAL
OF THE DECADE'

SUNDAY TIMES

ROALD DAHL'S
Matilda
THE MUSICAL

BOOK
DENNIS KELLY

MUSIC & LYRICS
TIM MINCHIN

TUE 11 JUNE - SAT 6 JULY
02380 711811 | Mayflower.org.uk

Mayflower
Theatre



ARTS COUNCIL
ENGLAND

15% OFF

ALL TROPHIES

IN OUR SPECIAL
ONLINE CATALOGUE AT

WWW.TROPHYMAN.CO.UK

OR VISIT OUR SHOWROOMS AT
SALISBURY • SOUTHAMPTON •

WOOTTON BRIDGE, IOW

FOR MORE DETAILS
PHONE 023 8013 8888



TROPHYMAN_{co.uk}

the largest trophy retailers in the UK

Rewarding The South's Winners

MY CAREER IN SPORT?
IT'S ALREADY HAPPENING.



SOLENT
UNIVERSITY

SOUTHAMPTON

Solent sport students get stuck straight in – working with Premier League footballers, elite athletes, sports clubs, local schools and community groups as they study.

Our practical, professional sport courses cover football, health and fitness, coaching, journalism, business and marketing, sport science, therapy and more. So what are you waiting for?

Find out more – visit www.solent.ac.uk

SGC

Southern Ground Care

Fine turf & sports field maintenance at affordable rates.



Aeration

- Improved Drainage
- Encourages Deeper Rooting
- Healthier Grass Sward

Top Dressing

- Improves Drainage
- Reinstates Pitch Level
- Fills Divots and Goalmouths

Scarifying

- Thatch Removal
- Surface Clean Up
- Removes Lateral Growing Grass

Overseeding

- Depth Controlled
- Faster Germination
- Minimal Surface Disturbance



www.southerngroundcare.co.uk 07775 726117



BOOK A PITCH — OR — JOIN A LEAGUE

Whether it's for team training or our FA accredited leagues, we welcome you to PlayFootball. With 4G all-weather, floodlit pitches and online bookings make PlayFootball your place to play.

Sign your team up today:

0333 577 4625

PLAYFOOTBALL.

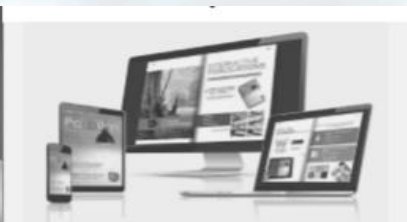
WWW.PLAYFOOTBALL.NET



Pappillon
Apps for Business



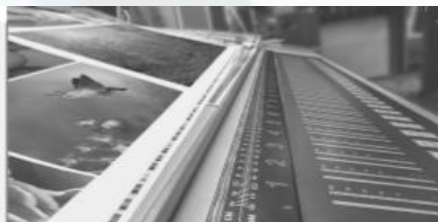
Apps for Business allows existing and prospective customers to connect to your business for info and services.



Pappillon
Digital Publications



Digital publications with interactive rich media features are highly effective and a cost efficient way to market your products and services.



Pappillon
Design & Print



Using the very latest print technologies combined with peerless customer service and pricing to match.

Pappillon Media Limited, High Street, Fairford GL7 4AF

01285 712487 | 07713 468326 | @tony.warrington@pappillon.co.uk |

www.pappillon.co.uk



PERFECT FOR COACHES AND CLUBS, KEEPING TRAINING ON THE MOVE.

ILITE CANNON

ILLUMINATE YOUR TRAINING

6,000 LUMENS
BUILT IN LITHIUM BATTERY
20,000+ HOURS OF LIGHT
7KG IN WEIGHT
IP67 RATED
WITHSTANDS UP TO 30MPH WINDS

PORTABLE FLOOD LIGHTS
FOR GRASSROOTS FOOTBALL



01635 887099
info@phoenixsportinggoods.com
www.phoenixsportinggoods.com



county cup Final

Wednesday 27th March 2019

Girls U18 Cup Final

Sponsored by Savvy

Warsash Wasps vs. Winchester City Flyers Harriers

at Romsey Town

Kick Off: 19:30

£5.00 Adults, £2.00 Concessions, U10's Free



MartinsGroup

Supplying New & Used Cars & Vans
In Hampshire For Over 100 Years



For Sales, Service, MOT,
Parts & Accessories

MartinsGroup



www.martins.uk.com

We are proud
to represent:

- Nissan
- Renault
- Dacia
- Volkswagen
- Alpine

Peugeot
authorised
repairer for
servicing and
MOT

Dealerships in:

- Andover
- Basingstoke
- Farnham
- Winchester
- Camberley

Find us on





CREATIVE DESIGN AND **TACTICAL MARKETING SUPPORT**

We are an award-winning tactical marketing and creative design agency geared towards growth. With over 30 years of experience our team of specialists create award-winning content, branding and design. Our work is informed by research and data; consistently producing measured results.

CONTACT.

THE TYPEFACE GROUP LTD

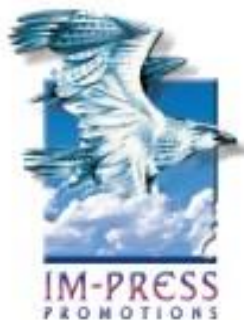
Suite A
The Innovation Centre
Basing View
Basingstoke
Hampshire
RG21 4HG

01256 614 921

hello@thetypefacegroup.co.uk



THETYPEFACEGROUP.CO.UK



IM-PRESS PROMOTIONS

SOUTHAMPTON LTD

PROMOTIONAL GIFTS
CORPORATE CLOTHING

Anything with a logo

www.impresswessex.co.uk

sales@impresswessex.co.uk TEL: 023 8086 4632

IMPRESSIVE PRODUCTS

PERSONAL SERVICE

IMPRESSIVE RESULTS

Specsavers proudly sponsors Hampshire Football Association

**Need an eye test or hearing test?
Book online at [specsavers.co.uk](https://www.specsavers.co.uk)
or call 0800 0680 241**



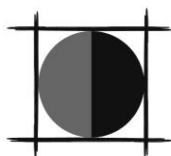


HAMPSHIRE COUNTY WOMEN & GIRLS LEAGUE

New teams always welcome to join us!

Proud sponsors of the Hampshire Women's County Cups and the
Hampshire County Girls Youth League
Supporters of the Hampshire FA Wildcats Program

www.hcwfl.com



U.K. OFFICE SYSTEMS LIMITED

Office Equipment supplier since 1990

RICOH

100% Supplies & Parts
Certified Partner

- Leading Ricoh partner - the market leader for office products
- Honest and straightforward advice
- Quick, efficient and friendly service by trained engineers
- Multi-functional Mono & Colour Copiers
- Home and Office Printer/Scanner/Fax systems
- Document scanning & Print management Software
- Free of charge Print volume assessments



CALL: 01428 652525

WWW.UK-OFFICE.CO.UK



SUMMER FOOTBALL TOURNAMENT 2019

PLEASE NOTE THAT THE AGE GROUPS ARE FOR THE SEASON 2018/2019

<u>DATES</u>	<u>AGE GROUP</u>	<u>FORMAT</u>	<u>COST</u>
<u>SUNDAY 2ND JUNE 2019</u>	AM: U7 + U8 BOYS	5V5	£30
	PM: U9 + U10 BOYS	7V7	£35
<u>SATURDAY 8TH JUNE 2019</u>	AM: U11 BOYS	9V9	£40
	AM: U7+U8 GIRLS	5V5	£30
	AM: U13 BOYS	7V7	£35
	PM: U12 BOYS	9V9	£40
<u>SUNDAY 9TH JUNE 2019</u>	AM: U14 + U15 BOYS, U13 GIRLS	7V7	£35
	PM: U16 + U18 BOYS, U11 + U13 + U15 GIRLS	7V7	£35
<u>SATURDAY 15TH JUNE 2019</u>	AM: U12 + U14 + U16 GIRLS	7V7	£35
	PM: U9 + U10 GIRLS	7V7	£35

FOR MORE INFORMATION OR TO ENTER A TEAM, PLEASE EMAIL
LEWIS.WELLS@HAMPSHIREFA.COM OR PHONE 02393 879998

QUIZ

#1

WHO WAS THE TOP SCORER IN THE PREMIER LEAGUE LAST SEASON?

#2

WHAT FOOTBALL CLUB PLAYS AT FRATTON PARK?

#3

WHAT COUNTRY WON THE WORLD CUP LAST YEAR?

#4

WHAT TEAM DOES JAMES WARD-PROWSE PLAY FOR?

#5

HOW MANY WORLD CUPS HAVE ENGLAND WON?

#6

WHO WON THE PREMIER LEAGUE LAST SEASON?

#7

WHO ARE THE NEWLY PROMOTED TEAMS IN THE PREMIER LEAGUE THIS SEASON?

#8

WHO CAPTAINS THE ENGLAND WOMENS FOOTBALL TEAM?

#9

WHO WON THE WOMENS SUPER LEAGUE LAST SEASON?

#10

WHO WAS TOP SCORE IN THE WOMENS SUPER LEAGUE LAST SEASON?

ANSWERS

1- MOHAMMED SALAH, 2- PORTSMOUTH FC, 3- FRANCE, 4- SOUTHAMPTON FC, 5- ONE, 6- MANCHESTER CITY, 7- CARDIFF, FULHAM, WOLVES, 8- STEPH Houghton, 9- CHELSEA, 10- ELLEN WHITE

GOSPORT FALCONS

PURPLE



FROM

SCORERS &
SUBSTITUTES

1	EMMA ANDERSON		
2	SARAH DARCY		
3	AMELIA DARCY		
5	SHERELLE ROSAM		
6	CHELSEA OSBORNE		
7	ELLIE HARTY		
8	HOLLIE TOBIN		
9	LAUREN BORJINI		
10	CHARLIE SCOTT		
12	SOPHIE CARPENTER		
13	SHANNEN WOODS		
14	JAZ HUNTINGTON		
16	BETSY WAKEFIELD		
20	AMY McCALLISTER		
21	LAUREN HARDING		
22	DEVIN WAKEFIELD		

**HAWLEY**

BLUE

FROM

SCORERS & SUBSTITUTES

1	CHRISTINA BINYON		
2	ERIN WETHERILL		
3	GEORGIA STALLEY		
4	GRACE PILLING		
5	LAURA NOBLE		
6	LOIS SWANTON		
7	SALLY WHITE-HALL		
8	JORDAN REID		
9	SHANNON MATHER		
10	JESS LOOMES		
11	SHELLIE IRVINE		
12	GEMMA TURNER		
13	ERIN CLEGG		
14	SOPHIE HOLLIS		
15	KIM HARDING		
16			

TODAY'S MATCH OFFICIALS**REFEREE:****JON ASHLEY****ASSISTANT REFEREES:****THOMAS HAVER MEGAN KAPADIA****FOURTH OFFICIAL:****DEREK SMITH****NOTES:**

45 MINUTES EACH WAY TO BE PLAYED.

IF LEVEL AT THE END OF NORMAL TIME, THE MATCH WILL BE DECIDED BY KICKS FROM THE PENALTY MARK.

PLEASE NOTE THAT THIS IS A NO SMOKING VENUE.

NO SPECTATORS ARE PERMITTED TO ENTER THE FIELD OF PLAY AT ANY POINT, INCLUDING THE POST-MATCH PRESENTATIONS.