



The FA Charter Standard

# CLUB CRITERIA 2017

FROM 2017/18





# THE FA CHARTER STANDARD PROGRAMME

**Launched in 2001, The FA Charter Standard Programme supported by McDonald's is The FA's accreditation scheme for grassroots clubs and leagues.**

**Its goal is to raise standards in grassroots football, support the development of clubs and leagues, recognising and rewarding them for their commitment and achievements.**

**With this in mind, The FA Charter Standard accreditation is awarded to clubs and leagues rigorously adjudged to be well run and sustainable – and which prioritise child protection, quality coaching and implementation of the Respect programme.**

## Three levels of FA Charter Standard

### Accreditation for clubs:

1. FA Charter Standard Club for youth and adult clubs: the entry-level accreditation
2. FA Charter Standard Development Club: for clubs clearly enhancing the quality and scope of their football offering
3. FA Charter Standard Community Club: acknowledging the most advanced level of club development and football provision

Each level requires additional criteria to be met.

For clubs who have FA Charter Standard accreditation, the challenge is to progress to the next level or to maintain that level. For clubs without FA Charter Standard status, the scheme provides aspirational points on its development journey.

## Validity period of FA Charter

### Standard status:

It lasts for one season and is renewed each year as part of the club's ongoing Annual Health Check process.

The Annual Health Check process should be completed by the deadline date set & communicated by your County FA. The health-check ensures the club's voluntary workforce is still in place to cover child welfare – and that the appropriate coaching qualifications, safeguarding and first aid are up to date.

You can access and update the club's records and complete the Annual Health Check within the Whole Game System.

The FA Charter Standard accreditation can be withdrawn if your club has a poor disciplinary record, fails to attend in Service workshops or CPD events – or is unable to continue to meet the award criteria.

## Any club can apply for FA Charter

### Standard status:

Any club including a one-team club can apply – provided the club is affiliated to its County FA.

The criteria are challenging, but attainable for every club. Once awarded, FA Charter Standard clubs are given an annual 'health check' to ensure the standards of provision are being maintained.

# THE BENEFITS TO BECOMING FA CHARTER STANDARD

## Tangible benefits:

- Free tickets (upon application) for England youth and women's internationals
- Invitations to County FA In Service workshops & CPD events
- Access to administrative support sessions
- Support with funding applications

### **New FA Charter Standard clubs also receive:**

- An official FA plaque and certificate
- Resources to help promote the club
- £100 worth of official FA Nike matchballs (FA Charter Standard Youth and Adult Clubs)
- £150 worth of official FA Nike matchballs (FA Charter Standard Development Clubs)
- £200 worth of official FA Nike matchballs (FA Charter Standard Community Clubs)
- Opportunity to become Nike Partner Club (FA Charter Standard Development and Community Clubs)

## Intangible benefits:

**FA Charter Standard status is a clear demonstration to all parents, sponsors and the public, that a club:**

- Is well-organised, safe and offers opportunities FOR ALL
- Has FA-qualified coaches as standard
- Adheres to FA Respect Policies and Codes of Conduct
- Prioritises Child Welfare
- Maintains appropriate levels of discipline
- Has access to the County FA and FA regional workforces
- Can use the coveted FA 'Three Lions' FA crest on its marketing and business materials

All the above can be promoted to recruit new players, members, volunteers and sponsors.

**There are additional benefits if a club passes the annual 'health check':**

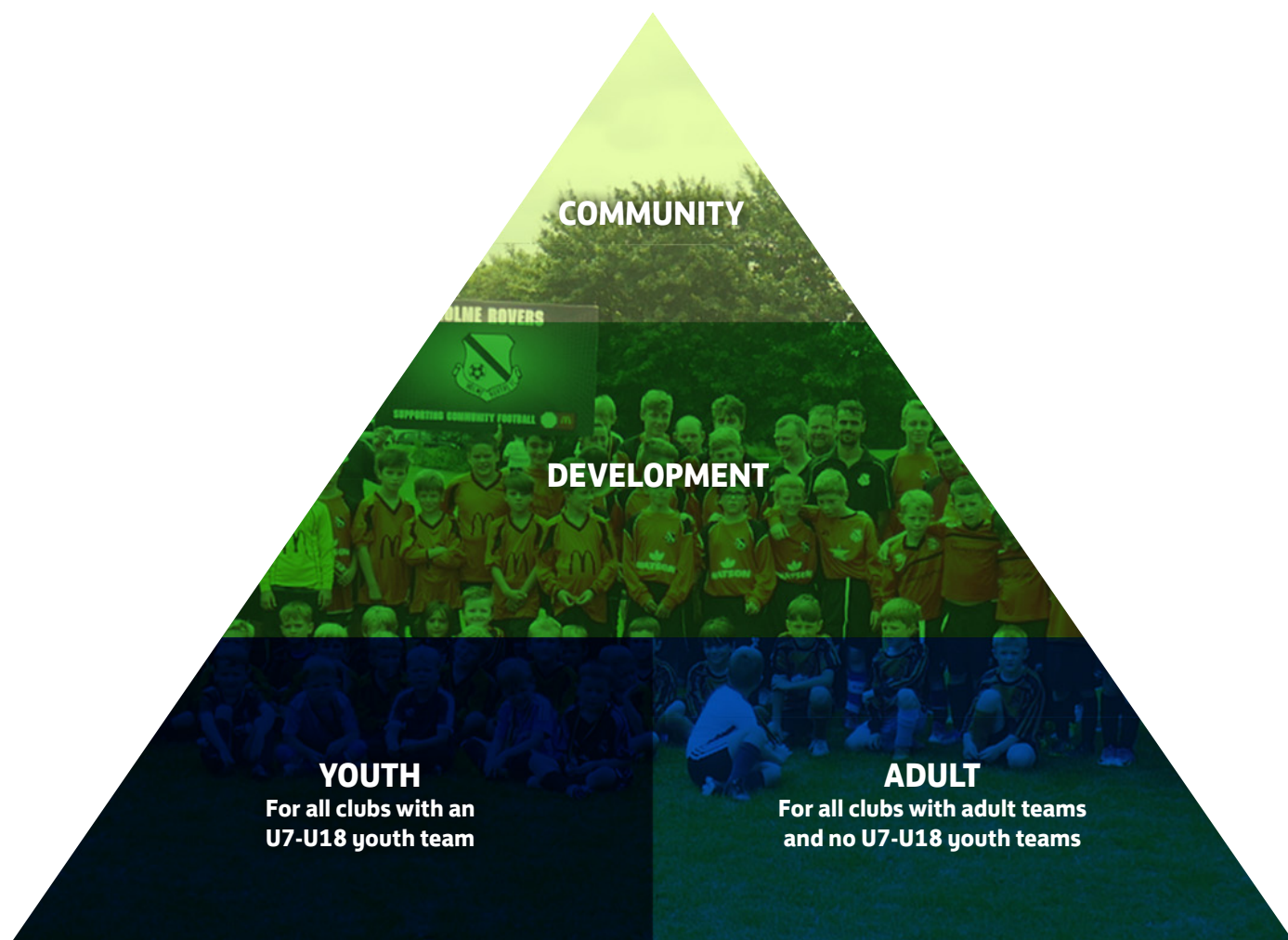
- In previous seasons additional benefits for completing the Annual Health Check has included additional Nike Matchballs and Free kits through the McDonalds kit scheme.
- Benefits for 2018-19 have not yet been confirmed so clubs completing the 2017-18 annual health check will receive benefits for the 2018-19 season once the benefits are confirmed.

## LEVELS OF CRITERIA

There are three Different levels of FA Charter Standard available for Clubs to Achieve

THE CRITERIA INCREASES  
WITH EACH LEVEL AND BUILD  
ON THE CRITERIA FROM  
THE LEVEL BELOW.

For example, to meet the  
'Development' criteria you must also  
meet the criteria for 'Youth'.



# CLUB CRITERIA – FOR APPLICATION & ANNUAL COMMITMENT

The criteria needed to be satisfied to apply for each level of FA Charter Standard status along with the annual commitment needed to be met for the annual health check is on the following pages.

To assist clubs with their application you can gain support from staff at your local County FA.

## They will provide you with:

- Bespoke officer support
- Further Information
- Adoptable Policies
- Additional Resources
- Help & Guidance

To find out who your local County FA is and to contact them please visit here  
<http://www.thefa.com/about-football-association/who-we-are/county-fas>

The application window runs from July 1st to June 30th each season. Clubs who submit an application and have it approved before June 30th will need to complete their County FAs Annual Health Check process the following season.

# ADULT CLUB CRITERIA

## For Application:

### Administration & Operations

- Have a designated FA Charter Standard Coordinator
- Club officials with clear job descriptions
- Be affiliated to a County FA
- Have at least one team playing in an FA sanctioned league
- Require a set of recent Committee meeting minutes
- Have a bank account in the club's name
- Provide a balance sheet and profit and loss account
- A good disciplinary record

### Constitution & Policies

- To be formerly constituted
- Have a club Equality Policy
- Implement The FA Respect Codes of Conduct

### Checks, Coaching & Qualifications

- A qualified first aider with every team having an in-date FA Emergency Aid qualification or FA recognised qualification. If the first aider is a player an additional first aider is required.
- A minimum of 90% of all FA qualified coaches to be members of The FA Licensed Coaches Club (Only applies to coaches who hold a qualification)

### Links, Pathways & Development Plans

- Link to a feeder club for players

## Annual Commitment:

- Complete the Annual Health Check during County FA window (dates set by County FA)
- First aid kit stocked and available at all training sessions & fixtures
- Organise an FA Respect briefing for all officials, managers and spectators
- If the senior team plays in the National League System (Steps 1-7) one coach to attend a six hour or 2, three hour workshops annually. (organised by the league)

# YOUTH CLUB CRITERIA

## For Application:

### Administration & Operations

- Have a designated FA Charter Standard Coordinator
- Club officials with clear job descriptions
- Be affiliated to a County FA
- Have at least one team playing in an FA sanctioned league
- Require a set of recent Committee meeting minutes
- Have a bank account in the club's name
- Provide a balance sheet and profit and loss account
- A good disciplinary record

### Constitution & Policies

- To be formerly constituted
- Have a club Equality Policy
- Have a club Safeguarding Policy
- Implement The FA Respect Codes of Conduct

### Checks, Coaching & Qualifications

- All relevant officials to have an FA Enhanced CRC check
- Minimum of one FA Level 1 coach with an in-date FA Emergency Aid qualification and FA Safeguarding Children certificate with every Youth Team
- A qualified first aider with every Adult team having an in-date FA Emergency Aid qualification or FA recognised qualification. If the first aider is a player an additional first aider is required.
- A minimum of 90% of all FA qualified coaches to be members of The FA Licensed Coaches
- Coach:Player ratio 1:16 max

## Links, Pathways & Development Plans

- Have a club link to recruit and/or progress players

### Annual Commitment:

- Complete the Annual Health Check during County FA window (dates set by County FA)
- First aid kit stocked and available at all training sessions & fixtures
- Organise an FA Respect briefing for all, managers and spectators
- Attend at least one County FA In Service workshop or CPD event
- If the senior team plays in the National League System (Steps 1-7) one coach to attend a six hour or two, three hour workshops annually. (organised by the league)

COMMUNITY

DEVELOPMENT

YOUTH

ADULT

# DEVELOPMENT CLUB CRITERIA

## For Application:

### Administration & Operations

- Have a designated FA Charter Standard Coordinator
- Club officials with clear job descriptions
- Be affiliated to a County FA
- Have at least one team playing in an FA sanctioned League
- Require a set of recent Committee meeting minutes
- Have a bank account in the clubs name
- Provide a balance sheet and profit & loss account
- A good disciplinary record

### Constitution & Policies

- To be formerly constituted
- Have a club Equality Policy
- Have a club Safeguarding Policy
- Implement The FA Respect Codes of Conduct

### Checks, Coaching & Qualifications

- All relevant officials to have an FA Enhanced CRC check
- Minimum of one FA Level 1 coach with an in-date FA Emergency Aid qualification and FA Safeguarding Children certificate with every Youth Team
- At least one FA Level 2 Coach with one of the teams
- A qualified first aider with every Adult team having an in-date FA Emergency Aid qualification or FA recognised qualification. If the first aider is a player an additional first aider is required.
- A minimum of 90% of all FA qualified coaches to be members of The FA Licensed Coaches Club
- Coach:Player ratio 1:16 max

## Links, Pathways & Development Plans

- Have a club link to recruit and/or progress players
- A minimum of 5 teams covering at least 4 different age groups
- A football development plan for 3 to 5 years

## Annual Commitment:

- Complete the Annual Health Check during County FA window (dates set by County FA)
- First aid kit stocked and available at all training sessions & fixtures
- Organise an FA Respect briefing for all officials, managers and spectators
- Attend at least one County FA In Service workshop or CPD event
- Review development plan with County FA
- If the senior team plays in the National League System (Steps 1-7) one coach to attend a six hour or two, three hour workshops annually. (organised by the league)



# COMMUNITY CLUB CRITERIA

## For Application:

### Administration & Operations

- Have a designated FA Charter Standard Coordinator
- Club officials with clear job descriptions
- Be affiliated to a County FA
- Have at least one team playing in an FA sanctioned League
- Require a set of recent Committee meeting minutes
- Have a bank account in the clubs name
- Provide a balance sheet and profit and loss account
- A good disciplinary record

### Constitution & Policies

- To be formerly constituted
- Have a club Equality Policy
- Have a club Safeguarding Policy
- Implement The FA Respect Codes of Conduct

### Checks, Coaching & Qualifications

- All relevant officials to have an FA Enhanced CRC check
- Minimum of one FA Level 1 coach with an in-date FA Emergency Aid qualification and FA Safeguarding Children certificate with every Youth Team
- At least two FA Level 2 Coaches within the club
- One person who has attended The FA Mentoring Adults course
- A qualified first aider with every Adult team having an in-date FA Emergency Aid qualification or FA recognised qualification. If the first aider is a player an additional first aider is required.
- A minimum of 90% of all FA qualified coaches to be members of The FA Licensed Coaches Club
- Coach:Player ratio 1:16 max

## Links, Pathways & Development Plans

- Have a club link to recruit and/or progress players
- A minimum of 10 teams covering mini-soccer, youth and adult football
- Have a minimum of one male and one female team
- A football development plan for 3 to 5 years

## Annual Commitment:

- Complete the Annual Health Check during County FA window (dates set by County FA)
- First aid kit stocked and available at all training sessions & fixtures
- Organise an FA Respect briefing for all officials, managers and spectators
- Attend at least one County FA In Service workshop or CPD event
- Review development plan with County FA
- If the senior team plays in the National League System (Steps 1-7) one coach to attend a six hour or 2, three hour workshops annually. (organised by the league)

COMMUNITY

DEVELOPMENT

YOUTH

ADULT

# APPLYING FOR FA CHARTER STANDARD STATUS

## Apply for the FA Charter Standard accreditation:

To apply, clubs should obtain an application form from their parent County FA. These can also be downloaded from [www.thefa.com/charterstandard](http://www.thefa.com/charterstandard).

Supporting evidence should also be attached to the completed application form. Such evidence includes a copy of the club's constitution, code of conduct, copy of the latest club AGM minutes and copies of their coaches' qualifications.

## Submitting an application:

Once you have completed an application for FA Charter Standard club accreditation it should be sent to your local County FA for them to add comments & review the information & supporting evidence.

Once submitted your County FA will either do 1 or 2

1. Contact you for additional information or evidence to satisfy the necessary criteria if it's not met
2. Approve your application and send it to TMG for processing

Once processed TMG will send your club some of the Tangible Benefits you receive for successfully becoming an FA Charter Standard club. These include an official plaque & certificate and FA Nike matchballs.

**The FA Charter Standard**

# **CLUB CRITERIA**

## **FROM 2017/18**

**The Football Association**

Wembley Stadium, Wembley,  
London HA9 0WS

**Email** [info@TheFA.com](mailto:info@TheFA.com)

**www.thefa.com/charterstandard**

**Please contact your County FA for any enquiries**

FA CHARTER STANDARD



SUPPORTING COMMUNITY FOOTBALL