

BIRMINGHAM COUNTY FOOTBALL ASSOCIATION



FOR
ALL



CLUB WELCOME PACK
SEASON 2018/19

IMPROVING LIVES BY IMPROVING FOOTBALL

Positive | Innovative | Valued | Supportive

CONTENTS



- **Introduction from Kevin Shoemake, CEO at Birmingham County FA**
- **Staffing Structure & How to Contact Us**
- **Safeguarding**
- **Equality & Inclusion**
- **FA Cup Ticket Ballot Information**
- **Business Insight**
- **Affiliation & County Cups**
- **Funding Opportunities**
- **Charter Standard**
- **Youth Council**
- **Referees**
- **Discipline & Respect Programme**
- **Football Education**
- **Women's & Girls Football**
- **Business League, Over 50's & Walking Football**
- **Facility Improvement**
- **Grassroots Football Awards**
- **Get Your Boots On**
- **Hive Learning**
- **Birmingham County FA Mobile & Matchday Apps**
- **General Data Protection Regulations**
- **Birmingham County FA Partnerships**
- **Youth League Liaison Officers**

WELCOME TO THE NEW SEASON FROM THE CEO



The Birmingham County FA is one of the largest and best County FA's in the country comprising of 1,500 clubs and 4,200 teams who play within 60 sanctioned leagues and competitions each season covering all formats of the game. We have an all-inclusive football FOR ALL philosophy and our dedicated team of 25 staff administer, organise, support, promote and develop all formats of the game in order help grow new and existing teams and clubs and increase participation.

700 of our teams including all the senior professional and semi-professional clubs compete annually in our 14 County Cups so the winners can truly class themselves as County champions – competitive male and female alike from Under 16's to adult competitions.

There are 1,500 qualified referees who include FIFA, Premier League and EFL officials, and 94% of the 46,000 matches which are played each season are covered by a qualified match official. The team along with our highly-skilled tutor workforce deliver in the region of 300 courses each year which includes 1,500 coaches and we offer various bursaries to support and improve the football workforce. We also arrange high-level coaching CPD events and support a referee development group.

We have 11 local authorities whom we work closely with alongside seven professional clubs and their charity foundations – just some of the many delivery partners we engage with to support and develop our national game. In addition many of our professional and semi-professional clubs offer special rates on tickets to affiliated clubs.

The Birmingham County FA team is one of the most diverse County FA workforce in the country with an average customer satisfaction rating of 92%. We are fully inclusive and proudly attained the Foundation Level Equality Standard in 2010 and the Preliminary Level in 2015. "Kick it Out" also recognise Birmingham County FA as one of their community champions. We have a full-time Welfare Officer who works with our leagues and clubs on their compliance and best practice helping to make the game and the environment safer for children and vulnerable adults.

Being one of the biggest CFA's we receive one of the largest allocations of FA Cup Final tickets which our affiliated clubs can apply for and then purchase. We also receive one of the largest FA grants which we disseminate to clubs in order for them to grow the game and improve facilities.

We have a highly innovative and pro-active approach and generate our own income streams and, along with the FA grants, reinvest back into the game at every level. The County FA Benevolent Fund supports ill or injured participants and with our partner easyfundraising we help clubs raise funds to support their own sustainability. The annual County Awards nights recognise excellence across all aspects of grassroots football and are attended by over 200 people each year.

We hope you have an enjoyable and RESPECTful season and as a valued Birmingham County FA 'member' we wish you and colleagues every success whatever level you are involved both on and off the pitch. We are here to help so please contact us and we'll do all we can to guide and support you and colleagues in your football endeavours.

Kevin Shoemake, CEO at Birmingham County FA

Positive | Innovative | Valued | Supportive

THE BIRMINGHAM COUNTY FOOTBALL ASSOCIATION - ROLES & RESPONSIBILITIES

Tel: 0121 357 4278

We have a great team who are keen to help and you can contact them by selecting one of the following options:

For **Finance** including paying fines - Press 1
For all **Courses and Education** - Press 2
For **Discipline Enquiries and Appeals** - Press 3
For **Club Affiliation, County Cups, League Sanctions and Rule Enquiries** - Press 4
For **Refereeing** - Press 5
For **Safeguarding and Welfare** - Press 6
For **Football Development inc Club & League Development, Charter Standard and Facilities** - Press 7
Or, press Zero for the main switchboard and other areas of the business

Alternatively, email: <mailto:support@birminghamfa.com> with a description or one of the areas of the business listed above in the subject line and we will get back to you

The BCFA Team - please hover over the name for a full list of responsibilities:

Or click here:

<http://www.birminghamfa.com/about/board-and-staff>

Kevin Shoemake

Chief Executive

Amy Sproson

Football Development Manager

Richard Lindsay

Business Planning Manager

David Nixon

Football Services Manager

Luke Bowles

Snr Football Development Officer (FDO)

Rachael M-Blunt

Snr Education Officer

Mohammed Juned

Club/League Mgr

Richard Watson

RDO/Safeguarding

Pat Edwards

Investigations Officer

Tracy Piper

Finance Officer

John Reeves

PR & Promotions Officer

Kieron Kavanagh

Operations Officer

Olly Hitchcox

Facilities Officer

Mandy Garner

Governance & Compliance Officer

Simon Crockett

Welfare/Respect Officer

Jemma Edwards

Discipline Officer

Obayed Hussain

Equality Officer

Scott Price

Customer Support/Reception

Jas Batt

FDO - Disability

Rafe Turner

FDO - Women/Girls

Joe Robinson

FDO - Recreation

Dawn Pilkington

Education Officer

Kirsty Dixon

Football Development Coordinator

SAFEGUARDING



Across the County we are proud of our Designated Officer network which provides support for volunteers, parents and children. Each Youth Club has at least 1 trained Club Welfare Officer (CWO) who is there to support the member club in the provision of safeguarding. Each Youth Competition has at least 1 League Welfare Officer (LWO) to support our CWO network.

Anyone working within regulated activity with children is required to have a Disclosing and Barring Service Check (DBS) carried out through The FA before they start work. Going through this process allows all clubs to adhere to their safer recruitment policies, ensuring that the right people are working within football. Each Club Welfare Officer has the ability to manage their own DBS check's so they are always aware whose check is in date and clear to work in regulated activity.

We provide guidance and support in various formats, including; Policies and Procedures Codes of Conduct, Safer Recruitment and Communication to U18s guidance.

For these and various other good practice guidance, click [here](#)

Birmingham County FA as all County Associations are regulated by The Football Association in line with the Child Protection in Sport Unit of the NSPCC. The County FA regularly meet with the local authority and local safeguarding children boards which cover our County FA, we have active dialogue across the County Councils to ensure we are compliant with each local county council.

The County FA is regularly updating and complying with legislation set down by the governing body to meet the needs of young people ensuring we offer a fun and safe environment for football for all.

We offer 3 different Safeguarding / Welfare Officer Courses for learners to take:

- Online Committee Members Course
- Safeguarding Children Workshop
- Welfare Officer Workshop

These courses offer learners a greater understanding into safeguarding children for anybody that works within football, regardless of your involvement. The Welfare Officer Workshop will give all Club Welfare Officers the relevant knowledge of how to deal with any safeguarding issues within their club, ensuring that the club is safeguarding compliant.

For further information please contact Simon Crockett, County Welfare & Respect Officer, via:

Telephone: 0121 357 4278 | Mobile: 07791 120 829



Birmingham County FA Safeguarding 17/18

571
Youth Clubs Affiliated

2,998
Affiliated
Youth Teams



With
Accredited
Coaches



3,304
CRC checks
completed
since March
2017



2,256 participants
have been on
Safeguarding
children workshops
since March 2017

88 Youth Clubs
visited during
Safeguarding
monitor visits

216

participants have
been on Welfare
Officer Workshops
since March 2017

86+

members from our Workforce
Development team have taken
additional Safeguarding training

2,087 participants
have taken the
Online Committee
Members
Safeguarding
Workshop



EQUALITY & INCLUSION



In August 2018 the FA announced its new Diversity, Equality & Inclusion plan called “In Pursuit of Progress.”

Birmingham County FA currently holds The FA’s Preliminary Standard for Equality & Inclusion and are striving to attain the Intermediate Level over the coming months. With an active Inclusion Advisory Board (IAG) in the County driving standards and policy we clearly demonstrate below our commitment to making football FOR ALL with a diverse workforce.

Birmingham County FA Workforce

- 68% Under 40 years old (The national average is 38%)
- 40% Female (The national average is 24%)
- 12% BAME (The national average is 7%)
- 1 Registered Disabled

You can download the new [In Pursuit of Progress plan here](#)

Kick it Out

“Kick It Out” is primarily a campaigning organisation which enables, facilitates and works with the football authorities, professional clubs, players, fans and communities to tackle all forms of discrimination. The campaign has been pivotal in persuading and supporting the game’s stakeholders to take their equality responsibilities seriously.

2018 marks the 25th anniversary of “Kick it Out” and its activity at grassroots level continues to be an important aspect of the organisation’s work to promote equality and inclusion as well as remove discrimination from the sport.

Realising the essential role played by grassroots clubs in their local communities, Kick It Out aims to develop understanding between different backgrounds, cultures and beliefs so they can help make football more accessible and equal for all.

The organisation is willing to provide assistance in any shape or form which will enhance inclusive practices either at a local or national grassroots level. Kick It Out can also help bridge the gap between local groups and the leading bodies within the game, who historically may have felt excluded or overlooked.

For further information, please contact info@kickitout.org



Positive | Innovative | Valued | Supportive

FA CUP TICKET BALLOT INFORMATION



The application process for FA Cup Tickets opens on the 1st April (or the 1st Monday if this date falls on a weekend).

The application window closes on the Friday after the 2nd Semi Final is held.

The application form will be released on the Birmingham County FA website and Social Media outlets.

Each club is entitled to apply for two OR four tickets in the end of the stadium of their choice. Applications for odd number of tickets will not be accepted. Four price ranges will be available to purchase and the applicant will be able to rank the order of prices they would like to be considered.

All tickets provided will be in either the home or away end NO neutral tickets are available. All successful applicants will be contacted via email approximately one week after the ballot closing date. The number of tickets issued to each applicant will be subject to demand.

Tickets must be paid for in full, either via card or cash before they can released - CHEQUES WILL NOT BE ACCEPTED

All successful applications will incur an admin charge of £3 which will be added to the cost of the transaction at the payment stage.

If tickets are to be posted out to the applicant, they will be dispatched by secure postage and the applicant will have to cover this cost at the relevant Special Delivery postal price at the time of application.



Positive | Innovative | Valued | Supportive

BIRMINGHAM COUNTY FA 2017-2018



**For
All**



**5,499
LEARNERS**



**1,576
REFEREES**



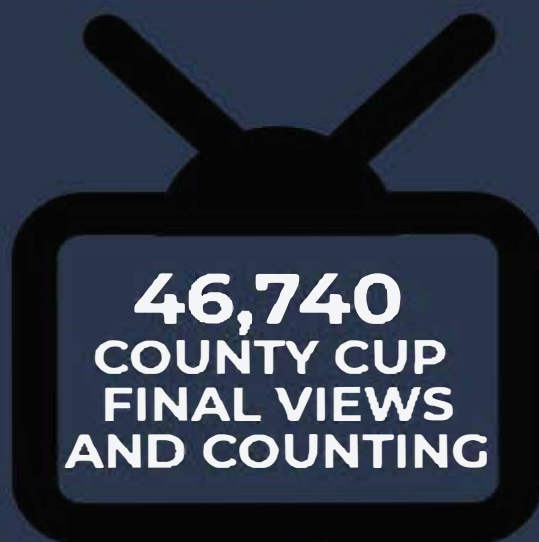
**3,304 CRC CHECKS
COMPLETED SINCE
MARCH 2017**



**14
COUNTY CUP
FINALS**



**46,740
COUNTY CUP
FINAL VIEWS
AND COUNTING**



**1,500 + AFFILIATED
CLUBS**



**4,400 + AFFILIATED
TEAMS**

**OVER 25,000 PLAYERS
REGISTERED THROUGH
WHOLE GAME SYSTEM**



**50,000
GAMES PLAYED ACROSS
THE COUNTY**



54

**PITCHES ASSESSED AS PART
OF THE PITCH IMPROVEMENT
PROGRAMME**

**272
COURSES
RUN**



AFFILIATION



One Club Affiliation

Birmingham County FA introduced 'One Club Affiliation' for the 2018/19 season. This gives you the opportunity of affiliating all teams under one main club. By doing this, one lead secretary will oversee the general administration of the club. This secretary can then give access to other assistant secretaries that will be able to access the online affiliation form as well as the clubs main dashboard.

How is affiliation processed through Whole Game System (WGS)?

To do this you will need to login to Whole Game System, click on the club tab before navigating to affiliation on the left-hand bar which will open the relevant form. You will then need to work through the eight stages, amending them accordingly before selecting your preferred Personal Accident Insurance.

After submitting your affiliation, it gets checked by Birmingham County FA and will be invoiced, subject to all mandatory safeguarding requirements being fulfilled by Youth teams and payment being received. Once this is completed, approval will be given.

Player Registration

Player Registration can be completed online via the WGS subject to competing in a participating league. To do this, your players must be added onto Whole Game System to then be assigned to teams, consent granted, prior to submission to the league who will then approve the registration. Birmingham County FA can provide assistance with this process.

County Cups

Birmingham County FA run 14 County Cup competitions each season ranging from senior football to U16 Youth.

Applications for entry can be made via your affiliation or upon request.

Our prestigious finals take place at Birmingham County FA Headquarters, with selected finals taking place at various professional and semi-professional grounds across the County.

COUNTY CUP FINAL STATS – 2017/18

- 46,740 views and counting on the 14 County Cup Finals that took place in 2017/18 on Facebook, Twitter and YouTube
- Best Senior Cup Final attendance since 2000 (1,251)
- Finals previewed in the Mirror and Birmingham Mail

FUNDING OPPORTUNITIES



Below you will find funding opportunities that Birmingham County FA would be happy to help your club explore if you meet the minimum criteria.

Charter Standard Growth Funding – This is available to existing Charter Standard clubs looking to increase their team numbers. Focus is on those clubs with a portfolio of 14 or more teams (male, female or disability).

Football Foundation Grow the Game – Eligibility for this funding is new Female and Disability teams. The window opens January each year and the application process can be accessed online through the Football Foundation's website using their Grantshot form. Click here for further information: [Grow the Game](#)

GR
OW
THE
GAME

Want to start a new football team?

Grants of £1,500 now available to support creation of new football teams.



Football Foundation Retain the Game – The application process opens in March and runs until May each year and is aimed at existing male clubs with two or more teams that have been established for five or more years. Click here for further information: [Retain The Game](#)

RETAIN
THE
GAME
2018

“PLAY ON”

£750 grants to support adult male teams*

*Terms and conditions apply



Birmingham County FA Mini Soccer Development Fund – This County led scheme offers £100 for existing mini soccer centres and £200 for new centres. All centres have to run for a minimum of 30 weeks of the year and aim their provision at four-seven year olds. Applicants must have attained the Charter Standard Award and be linked to a minimum of two local primary schools for advertisement purposes.

CHARTER STANDARD



The FA Charter Standard Programme is The FA's accreditation scheme open to all grassroots clubs and leagues. It aims to raise standards in the grassroots game, supporting the development of clubs and leagues, recognising and rewarding commitment, quality and achievement.

PROUD TO SUPPORT CLUBS GET UP TO THE STANDARD

The FA Charter Standard accreditation is for clubs who can be proud to be places where people want to play. These are the clubs who demonstrate they offer well-run and sustainable football.

Clubs who achieve Charter Standard status are proud to prioritise qualified coaching and safeguarding as well as the values of The FA's Respect campaign as part of their game.

There are two different entry levels of FA Charter Standard club accreditation:

FA Charter Standard Youth

FA Charter Standard Adult

Advanced levels are for clubs who look to grow participation, involve a variety of different people and offer different formats in their football environments.

FA Charter Standard Development is aimed at clubs who are enhancing the quality and scope of their football offering

FA Charter Standard Community acknowledges the most advanced level of club development and football provision

Clubs which achieve The FA Charter Standard accreditation are challenged to maintain high standards and, where appropriate, to improve and progress to new levels.

The accreditation makes a positive difference to the way clubs are run and to people's enjoyment of football.

Clubs and leagues work in partnership with Birmingham County FA to meet the criteria needed to achieve the accreditation. From 2018 funding toward The FA Level 1 Coaching Football qualification is available for clubs.

CHARTER STANDARD



WHAT THE FA CHARTER STANDARD MEANS FOR CLUBS

Clubs achieving The FA Charter Standard status can be proud to be the best place for people to play and enjoy football. They are able to demonstrate positive football environments where people can develop their skills, keep fit and enjoy playing as part of a friendly, inclusive community.

In return for becoming accredited FA Charter Standard clubs receive access to benefits that help to attract and retain players, volunteers and supporters. The level of support and resources available will depend on the level of accreditation a club achieves. Benefits clubs experience include:

- Attract and retain players, supporters and volunteers
- Funding for football equipment
- Access to promotional resources and guidance
- Tailored support from The FA and Birmingham County FA

PROUD TO SUPPORT GRASSROOTS LEAGUES

The FA Charter Standard League is an accreditation that sets an operational benchmark for FA sanctioned leagues. Since 2009 this is awarded to leagues which can demonstrate their commitment to provide well organised football in safer, more inclusive environments.

MAKE YOUR CLUB OR LEAGUE PROUD TO BE

FA CHARTER STANDARD

If you're interested in achieving The FA Charter Standard Accreditation, or just want to find out more, contact Birmingham County FA. We'll be able to support you.



Positive | Innovative | Valued | Supportive

YOUTH COUNCIL



What is the purpose of Youth Council?

Birmingham County FA Youth Council provides a voice for children and young people within decision making and delivery of core programmes as part of the County FA. The group champion the FA vision for Youth leadership, where Youth and Adults work in partnership to learn from each other to achieve success against shared goals. The group is made up of 16-25 year olds representative of our County demographic.

What are Youth Council's main priorities?

Youth Council support the County FA to deliver and promote inclusion and development initiatives within the community. This includes supporting disability and BAME programmes, County Cups as well as various development projects.

How often do they meet?

The group operate in line with the traditional season, starting up in September before breaking after County Cups in May. The pre-season period is usually used for recruitment planning for the upcoming season. We meet once a month to discuss and develop plans and ideas.

How do you get involved?

If you know of a young person (16-25) who would be a suitable fit for Youth Council, please get in touch. We can also support clubs to set up their own internal Youth leadership programmes or to develop Youth Adult partnerships within their committee structures. We do this by creating a model based on the needs of your club to ensure the project creates long-term change which supports your sustainability and development.



Positive | Innovative | Valued | Supportive

REFEREES



Across Birmingham County FA we have 1,576 referees who operate over a number of competitions around the County and nationally. Our referees range from the FIFA match officials who cover the Premier League and International Tournaments to mini soccer referees who officiate across grassroots football every Saturday and Sunday morning.

How to get involved in Refereeing?

The first step to get into refereeing is to complete the Referees Course (You need to at least be 14 years old to enrol onto this course). The course takes place across a number of dates and involves practical assessments.

How are Referees appointed?

Appointments to fixtures are made by referee secretaries and appointments officers across the County FA. Referees at grassroots level would be allocated an appropriate appointment based on leagues in their area.

County Development Programme

Each season, Birmingham County FA identifies referees with the potential and drive to progress in the game. They are invited to an evaluation evening where they are tested on the laws of the game and on the field of play. The group is made up of 35 referees from Level 7 to Level 3 who are given quality training and specialist coaching on how to progress in the game.

FA CORE

FA Centre of Refereeing Excellence (CORE) aims to provide a certain amount of identified referees at all levels with quality training, education and development opportunities which is delivered both centrally and across a number of regional locations.

FA CORE is for those referees who are demonstrating that they have clear 'potential' and 'opportunity' to progress in refereeing regardless of which part of the country they are from, their gender or their age.

The CORE programme is a national program for which the County FA's can identify potential referees who have the attributes to progress across the different levels.

The FA National Referee Strategy

The National Referee Strategy demonstrates The FA's commitment to maximising opportunities for inclusion, participation and development at all levels of the refereeing pyramid across a range of roles in refereeing. The strategy incorporates all parts of refereeing from how to recruit from all communities in the country to how referees are developed from the Referees Course.

Positive | Innovative | Valued | Supportive

BIRMINGHAM COUNTY FA 2017-2018



**FOR
ALL**



**5,499
LEARNERS**



**1,576
REFEREES**



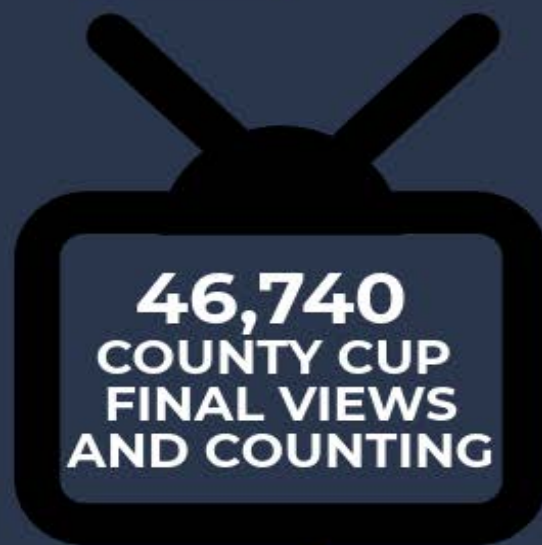
**3,304 CRC CHECKS
COMPLETED SINCE
MARCH 2017**



**14
COUNTY CUP
FINALS**



**46,740
COUNTY CUP
FINAL VIEWS
AND COUNTING**



**1,500 + AFFILIATED
CLUBS**



**4,400 + AFFILIATED
TEAMS**

**50,000
GAMES PLAYED ACROSS
THE COUNTY**



**54
PITCHES ASSESSED AS PART
OF THE PITCH IMPROVEMENT
PROGRAMME**



**272
COURSES
RUN**



DISCIPLINE



The below covers the basic information you should be aware of with regards to discipline matters dealt with by the County FA.

Here are seven categories for Match Based Discipline:

- Saturday
- Sunday
- Midweek
- Veterans
- School
- Representative
- Friendly

Automatic suspensions for dismissals are aligned to one of the seven categories – meaning that if you are dismissed in a game, you are unable to play again in the same category of football until the automatic match based suspension is served. This means that a player sent off in Sunday football would still be eligible to play for a Saturday team as the suspension would apply to Sunday football only.

Having a category based approach is a fairer and more consistent system – for example under the previous system, player sent off for his Sunday team may have received a one match ban, but because of bad weather he or she may not have been able to serve the suspension for six weeks. During this time his or her Saturday team may have been able to play matches, but the player would have missed out due to waiting to complete the one match suspension from his or her Sunday team.

Discipline FAQ's

Q: How much is the Administration Fee?

A: The Administration Fee is £15.00

Q: If a player is sent off or cautioned, who is liable for the Fine/Administration Fee?

A: If the player is involved in Youth football the club are liable for the fees. If the offence is in open aged football it would be the player's responsibility to pay the fine, but the club are responsible to ensure this does get paid in the first instance.

Q: I have recently signed a player and I need to check if they have any unserved suspensions, how can I check this?

A: There is also a facility within the Whole Game System to search for players and attach your club which will show the status.

If after checking you are still unsure or unable to find the player you can contact the County FA and provide their name, address and date of birth, and they can inform you of the current status.



Q: If a club plays a player who is under suspension, who gets charged?

A: It is both the responsibility of the club and player concerned to ensure that the player does not participate whilst under suspension. Therefore both the club and player would be charged.

Q: When will a suspension start for a player who has been sent off?

A: All suspensions commence seven days after the date of the sending off. If the club have not heard or received confirmation within two working days they should make contact with the County FA.

For the comprehensive FA Discipline Handbook 2018/19 please download the Birmingham County FA App available on Apple iPhone and Android.



FOOTBALL EDUCATION



Birmingham County FA offer a range of courses that upskill volunteers from coaches, referees, welfare officers, parents and more. The below public courses are offered and booked online by following the link: [Development and Courses](#) The Education team can also support clubs/leagues in organising their own bespoke courses, which are flexible and planned to suit your needs. As long as you can meet the minimum number of learners and schedule your courses.

Courses we offer:

The FA Level 1 in Coaching Football

The FA Level 1 in Coaching Football, leading to the achievement of the 1st4sport Level 1 Award in Coaching Football qualification, is the first stepping-stone on the core coaching pathway. It will provide you with an introduction to coaching the game and working with players from Under 7 to open age.

The FA Level 2 in Coaching Football

This nationally recognised qualification, awarded by 1st4sport Qualifications, will take you on a journey through the core components of the England DNA – How We Coach, How We Play, How We Support and The Future Player, helping you to begin shaping or refining your own coaching philosophy.

The FA Safeguarding Children Workshop

This short three hour course provides club representatives, coaches, referees and volunteers with an awareness of best practice in safeguarding children in football. The course supports The FA's strategic goal to raise standards across the game. The FA Safeguarding Children Workshop is designed for anyone that works with young people. Focused on making football safe, the course will help you learn how to recognise signs and symptoms of abuse, whilst understanding fears involved in these concerns.

The FA Level 1 Introduction To First Aid in Football

Provides you with the knowledge, practical skills and confidence to attend a conscious or unconscious player, ensuring that appropriate care is given until the emergency medical services arrive and takeover, or until an alternative healthcare professional(s) assumes responsibility. It is a practical guide to dealing with the essential components of saving a life, both in training and matches. This course goes beyond generic first aid and includes elements specific to football.

The FA Referee Course

The FA Referees Course is designed for anyone aged 14 and up who wants to join the tens of thousands of referees who operate week in, week out on local parks, throughout the English football pyramid, up to those who officiate the FA Cup Final and on the International stage. As a referee you play an integral role in ensuring all participants enjoy their match-day experience, helping create a competitive, fair, safe and enjoyable playing environment.

WOMEN'S & GIRLS FOOTBALL



SSE Wildcats Girls' Football provides girls with regular opportunities to play football and take part in organised sessions in a fun and engaging environment created exclusively for girls.

SSE Wildcats – The retention window for existing centres is January – February 2019.

The application window for new centres is October – January. New clubs looking to apply will be required to demonstrate how their sessions will be retained after the initial 16 week formal delivery period.

12-16's years – Small funding pots are available to run recreational sessions for this age group. These must be planned to become sustainable after 12 weeks and to run throughout the normal season.

16 years + – Small funding pots are available to run recreational sessions for this age group. These must be planned to become sustainable after 12 weeks and to run throughout the normal season.

Affiliated

Available leagues in the County for Youth players are:

The Central Warwickshire Girls League (U8-U18)

The Stourbridge & District Youth Girls Football League (U9-U12)

The league for adult players is the Birmingham County Women's League:
Birmingham County Women's League

Partners

We are working to support local clubs in partnering with the relevant education and community groups to ensure the player pathway is well connected in the County. If you want to build your links with local schools, colleges or universities delivering FA programmes or the other community groups engaging with females (Uniform Groups, Faith Groups etc.) please let us know your location and the age you are looking to work closer with.

Promotions

We want the good news stories and positive work you are all doing to be heard as far and wide as possible. To do this, we encourage you all to send in material for our monthly female football newsletter (images, short text and/or links to articles with the full story on). If these are sent in by the middle of each month they will go into the newsletter sent out at the start of the following month. If they come in after this they will go on the month after.

To get involved please email: Support@BirminghamFA.com

DISABILITY FOOTBALL



From grassroots to the elite game, whether you're a coach or player, here is how you can take part in disability football.

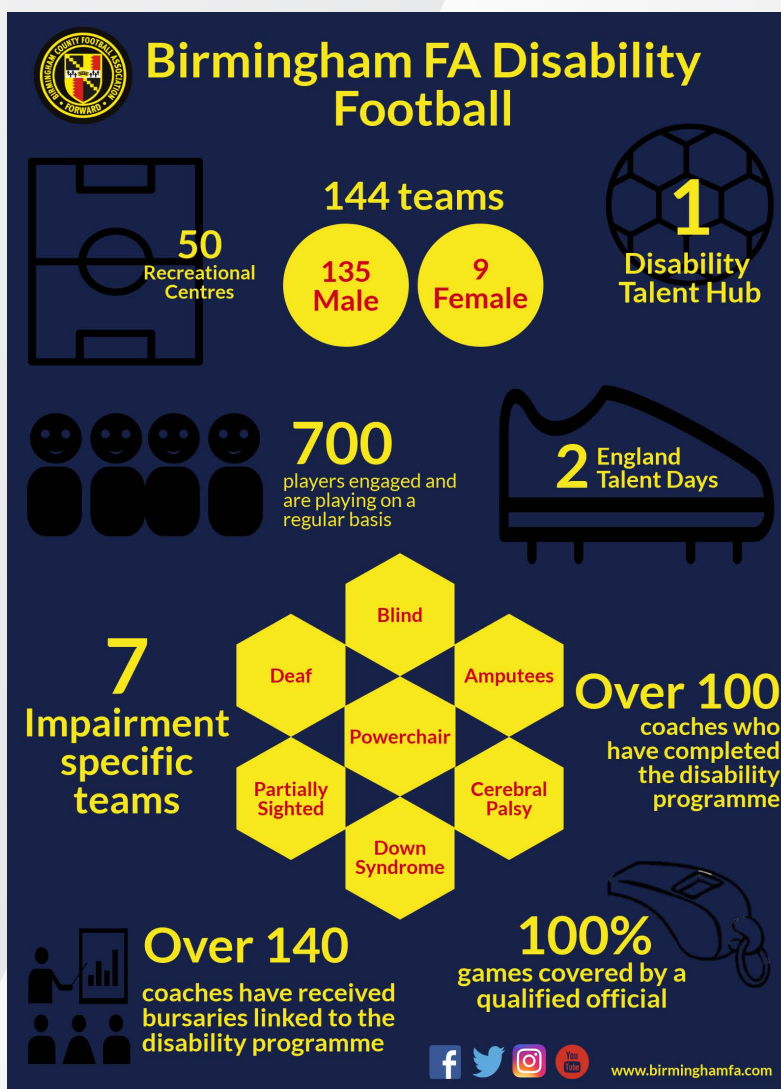
There are now more opportunities than ever to play football if you have a disability. Whatever your ability level, there has never been a better time to get involved and play disability football in the Birmingham County FA region.

We have a Football Development Officer dedicated to developing flexible, inclusive, and accessible playing opportunities at all levels and abilities.

Birmingham County FA believes in flexible, inclusive and accessible playing opportunities for everyone, and is committed to delivering a range of opportunities for players with a disability to access football at various levels across the County.

From grassroots to the elite game, there are multiple ways you can take part in disability football.

For more information please contact: Jasbir.Batt@BirminghamFA.com



BUSINESS LEAGUE



Building morale in a workplace is paramount to the success of any organisation. The Business League is designed to get colleagues to keep fit and socialise outside of the work place in a flexible, relaxing but competitive environment. The league is split into four divisions (North, South, East and West) and runs from February to October each year.

Division winners go through into the semi-finals with the final played at St. George's Park - the home of English football. Previous winners include:

Ash Green School (2015)

Jaguar Landrover (2016)

Dudley Police (2017)

If this is something you think your workplace would be interested in then please contact:

Joe.Robinson@BirminghamFA.com



VETERANS FOOTBALL, OVER 50'S & WALKING FOOTBALL

Here at Birmingham County FA we are keen to keep people playing the beautiful game for as long as possible.

We are constantly exploring opportunities for those in or around their 50's to continue in the player pathway before reaching walking football.

For further details or to find over 50's provision within your local area please contact:

Joe.Robinson@BirminghamFA.com



Positive | Innovative | Valued | Supportive

FACILITY IMPROVEMENT PROGRAMME



Birmingham County FA could potentially offer help and support to your club with funding opportunities in partnership with the Football Foundation, the organisation responsible for the development and refurbishment of grassroots sports facilities.

The Football Foundation currently has two pots of funding that you may be able to access.

Premier League & FA Small Grants Scheme

You can apply for up to £10,000 providing you have 50% match funding and the total project cost doesn't exceed £50,000. This can be used to fund projects such as replacement goal posts, pitch maintenance equipment and changing room refurbishments. To find out more information please see the link below.

Premier League & FA Small Grants Scheme

Premier League & FA Facilities Fund

The Premier League and FA Facilities Fund is designed to support larger projects which may include 3G football turf pitches (FTP's), changing pavilions/clubhouses and natural turf pitch works. All applicants must have security of tenure by freehold or leasehold. To find out more information please see the link below.

Premier League & FA Facilities Fund



Pitch Improvement Programme

The Pitch Improvement Programme (PIP) is designed to upskill and provides clubs and organisations with advice on better pitch management and maintenance. Partnered with the Institute of Groundsmanship (IOG) we can arrange for an IOG Regional Pitch Advisor to visit and assess your site, compiling and producing a comprehensive report. The cost of a visit and the report is £50. We can then outline the best available funding streams following the recommendations from the report.

To find out more information on any of the above or to discuss your potential project further please contact Olly Hitchcox: Oliver.Hitchcox@BirminghamFA.com

THE FA & MCDONALD'S GRASSROOTS FOOTBALL AWARDS



In July 2018 Birmingham County FA held their prestigious annual FA and McDonald's Grassroots Football Awards at St. Andrew's stadium, the home of Birmingham City F.C. The awards recognise how grassroots leagues, clubs, volunteers and community projects play their part in making the nation's favourite game happen week in and week out up and down the country.

McDonald's has been a partner of The FA for 16 years. As the longest standing supporter of grassroots football in the UK, McDonald's continues to champion those selfless volunteers who enable everyone to play and enjoy grassroots football in a safe, fun and inclusive environment regardless of age, gender, race, religion or disability. Every year the awards receive thousands of nominations and are backed by leading football legends such as Casey Stoney, Sir Geoff Hurst, Ryan Giggs, Kenny Dalglish and Pat Jennings.

Greg Clarke, FA Chairman, stated: "The FA & McDonald's Grassroots Football Awards are integral to recognising the thousands of exceptional grassroots volunteers all over the UK.

"By providing youngsters with the opportunity to play the nation's favourite game in a fun and safe environment these volunteers allow the next generation of footballing superstars to develop their skills. It's not an exaggeration to say that without their hard work and dedication, football in this country wouldn't be the same."

The 2017/18 winners were:

Young Volunteer of the Year – Barton Rovers JFC Junior Leaders
Grounds Team of the Year – Asa & Marissa Humphries, Kewford Eagles
Supporter of the Year – Michael Dourneen, Bromford Lions FC
Community Project of the Year – Birmingham Youth Sports Academy
Match Official of the Year – Mike Parr



The Respect Award - The Stourbridge & District Youth Football League Welfare
Officer of the Year – Justine Day, Stratford Town Colts
Charter Standard League of the Year – Midland Powerchair Football League
Volunteer of the Year – Pauline Hickman, Halas Hawks FC
Charter Standard Club of the Year – Solihull Moors FC
Coach of the Year – Ian Postle, Halesowen Town Colts

Nominations capture The FA's 'For All' ethos and will be judged upon The FA's values of Progressive, Respectful, Inclusive, Determined and Excellent, or PRIDE for short.

Nominations for the McDonald's Grassroots Football Awards 2018/19 will open in May, and further details will be released on the website on how you can nominate.

GET YOUR BOOTS ON



“Get Your Boots On” is a unique player/club finding app provided by Birmingham County FA that has successfully matched over 1000 players to local clubs over the last few months.

Whether you are a team looking to recruit additional players, a parent trying to find a club for your child or someone wanting to get back playing registration is totally free and you can be connected with likeminded football people within seconds.

Follow the steps below to complete your registration today:

Step 1 – Log on to www.bcfabootson.com

Step 2 – Complete your personal profile (choose Team/Provider, Player or Parent if player is under 16 years old)

Step 3 – Find your match and contact them safely and securely through the site

Step 4 – Get Your Boots On and play!

GET IN THE GAME



*Get Your
Boots On.*



BUILD YOUR SQUAD



Positive | Innovative | Valued | Supportive

HIVE LEARNING



Hive Learning

Hive Learning is The FA's preferred choice of platform for creating an online learning and social forum for coaches and parents alike.

Free to join, the two main groups accessible to everyone are:

The FA Coaching Community

Over 30,000 coaches/parents have joined this interactive group where you can share knowledge, ideas and experiences as well as receive support from FA professionals across all facets of the organisation.

With guidance and advice on everything from planning a coaching session to best practice on a matchday you too can become part of a strong network of like-minded coaches.



The England DNA Foundation Phase

Launched in 2017 and driven by former England Futsal Manager and now The FA's Technical Lead for foundation for five-to-11 Years Pete Sturges has now reached over 10,000 users. The group is committed to empowering coaches in raising standards and providing our youngest players with the best possible foundation phase experience through sharing age appropriate practices and ideas.

There is also the facility within the platform to create your own club page to promote and share success stories amongst your members.

To join the fastest growing coaching network register via the below link:

www.hivelearning.com

Positive | Innovative | Valued | Supportive

BIRMINGHAM COUNTY FA MOBILE APP



The Birmingham County FA mobile “app” is available to download on iPhone and Android platforms.

The app replaces the old paper handbook and gives you access to all of the services you require at the touch of a screen. You can even receive important messages from Birmingham County FA directly to your mobile device ensuring you are up to date with everything that’s going on.

MATCHDAY APP

In July 2018 The FA launched the new Matchday app to all affiliated football managers and players/parents of players that participate in leagues that use Full-Time and register players via the Whole Game System for affiliated football. If you have not seen the app in action yet please take a moment to watch this [teaser video](#).

The first release of Matchday includes a fantastic set of features that will give eligible managers and players a chance to organise training, games, player availability, pick squads and submit scores all using their smartphone. Further products and will be released as the season progresses.

We hope you are all as excited as we are at the launch of this great new grassroots app. And, best of all, it’s FREE.



Positive | Innovative | Valued | Supportive

GENERAL DATA PROTECTION REGULATIONS (GDPR)



What is GDPR?

The rules that govern data protection have evolved and are now referred to as The General Data Protection Regulation (GDPR). As part of The FA's commitment to share knowledge and best practice, the following advice has been provided to help all leagues and clubs remain compliant.

Does GDPR Apply to us?

GDPR applies to all data controllers and data processors, so if you collect any personal data in running your club (which you definitely will do if you have any members) then GDPR will apply to you.

There are no exclusions for CASCs, charities or not-for-profit organisations. It doesn't make a difference for example if you are structured as an unincorporated organisation or company limited by guarantee – the requirements are concerned with the data you hold and how you handle this.

What is Personal Data?

Any information relating to an identified or identifiable data subject who can be identified, directly or indirectly, in particular by reference to an identifier such as a name, an identification number, location data, online identifier or to one or more factors specific to the physical, physiological, genetic, mental, economic, cultural or social identity of that person.

Examples include: name, address, telephone number, IP address, membership numbers etc.

What if we choose not to use FA Systems?

The FA will not be undertaking any review or compliance activities in respect of non-FA systems. In addition, The FA will not be undertaking compliance activities in respect of leagues' use of data on FA systems for their independent purposes or, to the extent that it falls under the provisions of the regulation, personal data processed by leagues in hard copy forms.

Any non-FA systems or applications which leagues use to collect personal data or processing which is carried out by leagues for independent purposes will need to be reviewed and updated (as necessary) by each league. Each league will need to consider if it needs to update its notices to participants, create internal data protection procedures or spend time considering its information security procedures.



Where Can I Find Further Information?

The Information Commissioner's Office (ICO) has also produced guidance for all UK businesses on how to prepare for the GDPR. You can find the following on its website:

[The ICO Preparing for GDPR](#)

[The ICO Guide to GDPR](#)

In addition please see below links to example documentation that has been verified by The FA's legal team as meeting the statutory compliance level.

Template Documents

To view our Data Protection Policy, Privacy Notice for Clubs and Privacy Notice for Leagues please visit:

<http://www.birminghamfa.com/leagues-and-clubs/club-management/gdpr>

BIRMINGHAM COUNTY FA PARTNERS



Discount Football Kits – Discount Football Kits are Birmingham County FA's Official Retail Partner alongside Nike. All parties in the partnership actively work together to benefit the Association's member leagues and clubs as much as possible.

Koolpak – Koolpak has teamed up with Birmingham County FA to offer you special discounted prices for their best-selling first aid essentials so that you are prepared for when you need to treat an injured player.



My Protein – MyProtein are Birmingham County FA's Official Sports Nutrition partner. It is their mission to improve the active lifestyle of people around the world, fuelling every challenge, every performance, every moment. Football is a great way to keep physically and mentally active and regular participation can considerably contribute to an active lifestyle.

easyfundraising – We have teamed up with easyfundraising to give our members a great new way to raise funds simply by shopping online! Register your club, league, or team and get free donations from retailers every time you, your players, family, and supporters shop through easyfundraising online.



iLite – iLite are Birmingham County FA's official Portable Floodlight Supplier. Provided by Phoenix Sporting Group, iLites offer flexible, efficient and cost effective solutions to illuminating sports pitches. Through this partnership, Birmingham County FA members can get exclusive rates, offers, and funding.

Replay Maintenance– Replay Maintenance is the UK's market leader in maintaining synthetic sports surfaces. Through our partnership with Replay Maintenance all facilities within Birmingham have access to a fluid 'pool' of information and advice with an expert on hand at the time they are required. From initial grounds professional training through to budgets and forecasts, the partnership caters for all aspects of managing and maintaining a synthetic sports pitch.



Positive | Innovative | Valued | Supportive

YOUTH LEAGUE LIAISON OFFICERS

STOURBRIDGE & DISTRICT YOUTH FOOTBALL LEAGUE: LUKE BOWLES

SANDWELL MINOR LEAGUE: KIRSTY DIXON

TAMWORTH JUNIOR FOOTBALL LEAGUES: AMY SPROSON

BURTON JUNIOR & MINOR FOOTBALL LEAGUES: RICHARD LINDSAY

COVENTRY & WARWICKSHIRE YOUTH & MINOR LEAGUE: SIMON CROCKETT

MID-WARWICKSHIRE BOYS & YOUTH LEAGUES: OLIVER HITCHCOX

BIRMINGHAM ABILITY COUNTS: JASBIR BATT

CENTRAL WARWICKSHIRE GIRLS FOOTBALL LEAGUE: RAFE TURNER

STOURBRIDGE & DISTRICT YOUTH FOOTBALL LEAGUE (GIRLS): RAFE TURNER

MIDLAND JUNIOR PREMIER: LUKE BOWLES

JUNIOR PREMIER LEAGUE: LUKE BOWLES

GREEN LANE MASJID: OBAYED HUSSAIN

CENTRAL WARWICKSHIRE YOUTH FOOTBALL LEAGUE: MOHAMMED JUNED



FOR
ALL



Birmingham County Football Association Address:

Ray Hall Lane

Birmingham

B43 6JF

Telephone: 0121 357 4278

Email: Support@BirminghamFA.com

Website: www.BirminghamFA.com

 **@birminghamCFA**

 **@birminghamfa**

 **@birmingham_fa**

 **@birmingham_fa**

Positive | Innovative | Valued | Supportive